



Cover Materials

Sunbrella® Acrylic Fabrics	152-157
SeaMark Marine Fabric	158
Acrylic Binding Tape	159
Sunbrella® Facings & Bindings	160
Stamoid Bindings & Facings	161
Stamoid	162-163
Vinyl Fabrics	164
Vinyl Binding Tape & Weblon®	165
Polyester Cover Fabrics	166-168
Upholstery & Cover Fabrics	169
Vinyl Upholstery Materials	170-171
Window Material - Sheets	172-173
Window Material - Rolls	174
Cleaners & Protectants	175
Vinyl Fabrics	176
Vinyl Coated Fabrics	177
Leather, Adhesives & Cleaners	178
Mesh Fabrics	179
Trampoline Mesh	180
Vinyl Mesh Fabrics	181
Nylon Fabrics	182
Nylon & Polyester Bag Materials	183

Fasteners

DOT® Fasteners	184-187
Fastener Tools	188-189
Hooks, Eyes & Buckles	190
Fasteners	191

Marine Cover Fittings

Frame Kit	192
Heavy Duty Canopy Track	192
Stainless Steel Boat Top Fittings	193-198
Gemlock Collapsible Strut & Hinges	199
Tube Benders	200
Tube & Frame Accessories	201
Grab Rails & Fittings	202
Tie Down & Lacing Fittings	203
Awning Tapes	204
Awning Track	205
Poles & Slats	206
New Products	207
Pattern Making Tools	208

Sunbrella® Acrylic Fabrics

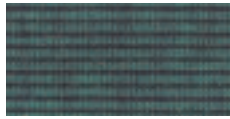
Color Availability



Pacific Blue



Jockey Red



Hemlock Tweed



Natural



Dubonnet Tweed



Charcoal Tweed



Jet Black



Royal Blue



True Brown



Aquamarine



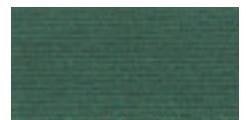
Navy Blue



Cadet Gray



Burgundy



Forest Green



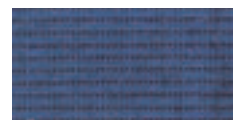
Oyster



Captain Navy



Mediterranean Blue



Mediterranean Tweed



Erin Green



Sunflower Yellow



Orange



Turquoise



Sea Spray



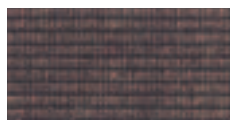
Brown



Tan



Mocha



Walnut Brown



Beige



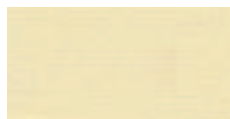
Terra Cotta



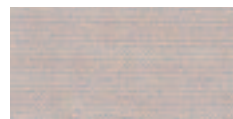
Sky Blue



Toast



Vanilla



Linen



Coral



Mauve



Black Cherry



Sapphire Blue



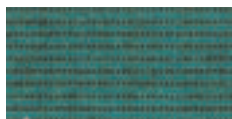
Persian Green



Charcoal Gray



Sea Grass Green



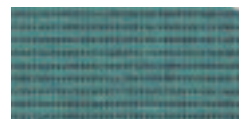
Persian Tweed



Taupe



Plum



Teal Tweed



Silver



Spruce



Salmon



Buttercup



Logo Red



Marine Cover Fabrics

Note: Color representation from 4-color process is for reference purposes only. Please inquire for color sample of actual fabric.

Sunbrella® Acrylic Fabrics

Specifications for Sunbrella® Fabrics

- ▲ 100% solution dyed woven acrylic fabrics in 1170mm/46 inch and 1520mm/60 inch widths.
- ▲ Excellent fade and weather resistance, durable, UV resistant.
- ▲ Colorfast, water repellent, mildew and stain resistant.
- ▲ Fabric covered by 5 year warranty.
- ▲ Average roll length: 55m/60 yards.
- ▲ Weight: 314gsm/9.25oz/sq yd



Concord



Linen Tweed



Periwinkle



Brass



Aspen



Mahogany



Alpine



Heather Beige



Fern



Capri



Marine Blue



Tuscan



Wheat



Ocean Blue



Spa



Cocoa



Toast Tweed

Color Chart

117cm/46 inch Part No.	152cm/60 inch Part No.	Color
FS4601	FS6001	Pacific Blue
FS4603	FS6003	Jockey Red
FS4605	FS6005	Hemlock Tweed
FS4604	FS6004	Natural
FS4606	FS6006	Dubonnet Tweed
FS4607	FS6007	Charcoal Tweed
FS4608	FS6008	Jet Black
FS4617	FS6017	Royal Blue
FS4621	FS6021	True Brown
FS4623	FS6023	Aquamarine
FS4626	FS6026	Navy Blue
FS4630	FS6030	Cadet Gray
FS4631	FS6031	Burgundy
FS4637	FS6037	Forest Green
FS4642	FS6042	Oyster
FS4646	FS6046	Captain Navy
FS4652	FS6052	Mediterranean Blue
FS4653	FS6053	Mediterranean Tweed
FS4600		Erin Green
FS4602		Sunflower Yellow
FS4609		Orange
FS4610	FS6010	Turquoise
FS4611		Sea Spray
FS4613		Brown
FS4614		Tan
FS4616		Mocha
FS4618		Walnut Brown
FS4620		Beige
FS4622		Terra Cotta
FS4624		Sky Blue
FS4628	FS6028	Toast
FS4629		Vanilla
FS4633	FS6033	Linen
FS4638		Coral
FS4639		Mauve
FS4640		Black Cherry
FS4641		Sapphire Blue
FS4643	FS6043	Persian Green
FS4644	FS6044	Charcoal Gray
FS4645		Sea Grass Green
FS4647	FS6047	Persian Tweed
FS4648	FS6048	Taupe
FS4649	FS6049	Plum
FS4650	FS6050	Teal Tweed
FS4651	FS6051	Silver
FS4656	FS6056	Spruce
FS4627		Salmon
FS4635		Buttercup
FS4666	FS6066	Logo Red
FS4665	FS6065	Concord
FS4654	FS6054	Linen Tweed
FS4657		Periwinkle
FS4658		Brass
FS4668		Aspen
FS4667		Mahogany
FS4655	FS6055	Alpine
FS4672	FS6072	Heather Beige
FS4671		Fern
FS4675	FS6075	Capri
FS4678		Marine Blue
FS4677		Tuscan
FS4674		Wheat
FS4679	FS6079	Ocean Blue
FS4673		Spa
FS4676		Cocoa
	FS6028TWD	Toast Tweed

Marine Cover Fabrics

Note: Color representation from 4-color process is for reference purposes only. Please inquire for color sample of actual fabric.

Sunbrella® Acrylic Fabrics

Color Availability



FS4705



FS4751



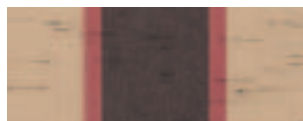
FS4755



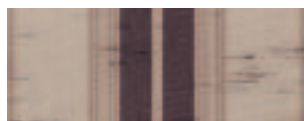
FS4765



FS4772



FS4773



FS4776



FS4777



FS4780



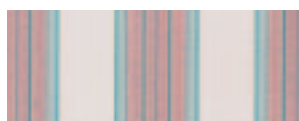
FS4781



FS4782



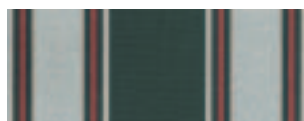
FS4783



FS4784



FS4787



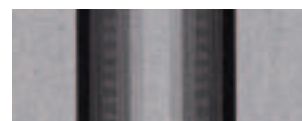
FS4790



FS4796



FS4798



FS4799



FS4805



FS4806



FS4901



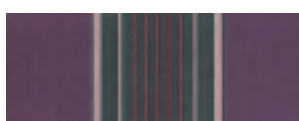
FS4902



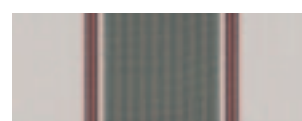
FS4905



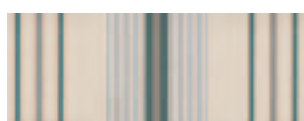
FS4907



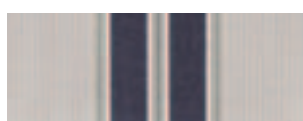
FS4909



FS4911



FS4914



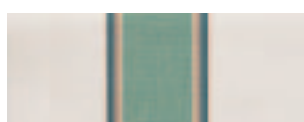
FS4916



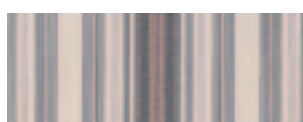
FS4917



FS4918



FS4920



FS4922



FS4932



FS4935

Note: Color representation from 4-color process is for reference purposes only. Please inquire for color sample of actual fabric.

Sunbrella® Acrylic Fabrics

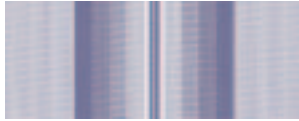
Color Availability



FS4936



FS4939



FS4941



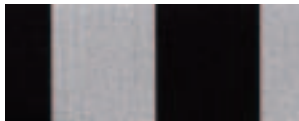
FS4944



FS4905



FS5703



FS5704



FS5760



FS4754



FS4923



FS4956



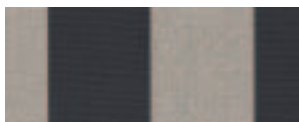
FS5700



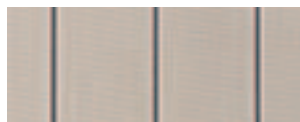
FS5702



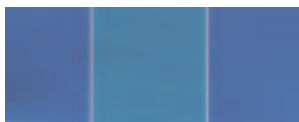
FS4802



FS4928



FS4961



FS4919



FS4954



FS4958



FS4924

Sunbrella® Stripe

- ▲ 100% solution dyed woven acrylic fabrics in 1170 and 1520mm/46 and 60 inch widths.
- ▲ Excellent fade and weather resistance.
- ▲ Durable, UV resistant.
- ▲ Colorfast, water repellent, mildew and stain resistant.
- ▲ Breathable for moisture evaporation and cooler covered area.
- ▲ Fabric covered by 5 year warranty.
- ▲ Average roll length: 55m/60 yards.
- ▲ Weight: 314gsm/9.25oz/sq yd.
- ▲ Uses: Awning, outdoor furniture, bags.



Color Chart

Part No.	Description
FS4705	Hemlock Tweed Formal Sunbrella
FS4751	Hemlock Tweed Fancy Sunbrella
FS4755	Pacific Blue Fancy Sunbrella
FS4765	Dark Brown/Salmon/Beige Sunbrella Awning
FS4772	Burgundy Elite Sunbrella
FS4773	Bisque Brown Sunbrella
FS4776	Chocolate Chip Fancy Sunbrella
FS4777	Gray/Beige Chip Fancy Sunbrella
FS4780	Persian Green Splash Spun Sunbrella Awning
FS4781	Aquamarine Splash Spun Sunbrella Awning
FS4782	Light Blue/Natural Splash Spun Sunbrella
FS4783	Pacific Blue/Natural Splash Spun Sunbrella
FS4784	Coral Splash Spun Sunbrella
FS4787	Forest Green Splash Spun Sunbrella
FS4790	Forest Green Fancy Sunbrella
FS4796	Beige/White Fancy Sunbrella
FS4798	Burgundy/Black/White Sunbrella
FS4799	Gray/Black/White Sunbrella
FS4805	Pacific Blue/Natural 6 Bar Sunbrella
FS4806	Forest Green/Natural 6 Bar Sunbrella
FS4901	Captain Navy/Forest Green/Yellow/Red Sunbrella
FS4902	Captain Navy/Natural Classic Sunbrella
FS4905	Burgundy Transition Spun Sunbrella
FS4907	Taupe Five Bar Sunbrella
FS4909	Plum Fancy Sunbrella
FS4911	Moss Classic Sunbrella
FS4914	Forest Green Transition Sunbrella
FS4916	Navy/Taupe Fancy Sunbrella
FS4917	Moss/Canvas Block Stripe Sunbrella
FS4918	Salmon/Canvas Sunbrella
FS4920	Sage/Canvas Stripe Sunbrella
FS4922	Alpine/Burgundy Pencil Stripe Sunbrella
FS4932	Forest Green/Beige/Natural Sunbrella
FS4935	Sage Graduated Stripe Sunbrella Awning
FS4936	Sand/Graduated Stripe Sunbrella
FS4939	Brass/Black Cherry Classic Sunbrella Awning
FS4941	Periwinkle Graduated Stripe Sunbrella Awning
FS4944	Blended Green Tailored Bar Stripe Sunbrella
FS4945	Taupe Tailored Bar Stripe Sunbrella Awning
FS5703	Red/White Stripe Sunbrella Awning
FS5704	Black/White Stripe Sunbrella
FS5760	Beige/White 6 Bar Sunbrella
FS4754	Green Fancy Stripe Sunbrella Awning
FS4923	Black Forest Fancy Stripe Sunbrella Awning
FS4956	Heather Beige 6 Bar Stripe Sunbrella Awning
FS5700	Green/White 6 Bar Stripe Sunbrella Awning
FS5702	Yellow/White 6 Bar Stripe Sunbrella Awning
FS4802	Sapphire Fancy Stripe Sunbrella Awning
FS4928	Alpine/Beige 6 Bar Stripe Sunbrella Awning
FS4961	Putty Regimental "Signature Series" Stripe Sunbrella Awning
FS4919	Mediterranean/Aqua Block Stripe "Signature Series" Sunbrella Awning
FS4954	Heather Beige Classic "Signature Series" Stripe Sunbrella Awning
FS4958	Taupe Colony Stripe "Signature Series" Sunbrella Awning
FS4924	Alpine/Terracotta Classic "Signature Series" Stripe Sunbrella Awning

Note: Color representation from 4-color process is for reference purposes only. Please inquire for color sample of actual fabric.

Sunbrella® Acrylic Fabrics

Sunbrella® Firesist

- ▲ Inherently flame resistant Sunbrella acrylic fabrics.
- ▲ Meets NFPA701 fire retardant specifications.
- ▲ Meets most fire codes for exterior and interior fabric use.
- ▲ Will not melt drip.
- ▲ Very colorfast - color is locked into fiber.
- ▲ Excellent mildew resistance.
- ▲ Breathes for a cooler covered area.
- ▲ Colors available against special order.
- ▲ Weight: 314gsm/9.25oz/sq yd.



Part No.	Width: mm/in		Roll Length: m/yd	
FIRESIST	1520	60	32 - 50	35 - 55

Sunbrella® Plus

- ▲ 100% solution dyed Acrylic with a waterproof urethane coating.
- ▲ Resists sunlight, mildew, rot and atmospheric chemicals.
- ▲ Excellent abrasion resistance.
- ▲ Dimensionally stable.
- ▲ Bright and colorfast - regular Sunbrella compatible.
- ▲ Use Sunbrella Plus for: canopies, biminis, dodgers, awnings, cockpit covers, travel covers and camper tops.
- ▲ Average roll length: 32-50m/35-55 yards.
- ▲ Other colors available against special order.
- ▲ Weight: 348gsm/10.25oz/sq yd.



Part No.	Color	Finished Width: mm/in	
S/8430	Cadet Gray	1520	60
S/8401	Pacific Blue	1520	60
S/8417	Royal Blue	1520	60
S/8426	Navy Blue	1520	60
S/8406	Dubonnet Tweed	1520	60



Sunbrella® - Marine, Awning, Firesist, Plus - Care & Cleaning



Sunbrella® fabric should be cleaned regularly before substances such as dirt, roof particles, etc. are allowed to accumulate on and become embedded in the fabric. The fabric can be cleaned without being removed from the installation. Simply brush off any loose dirt, roof particles etc; hose down and clean with a mild solution of natural soap in lukewarm water (no more than 100°F). Rinse thoroughly to remove soap. **DO NOT USE DETERGENTS.** Allow to air dry.

For more stubborn cases: Soak the fabric for approximately twenty minutes in a solution of no more than ½ cup (4oz) of a non-chlorine bleach and ¼ cup (2oz) natural soap per gallon of water at approximately 100°F. Rinse thoroughly in cold water to remove all of the soap. Note: excessive soaking in non-chlorine bleach can deteriorate sewing threads. This method of cleaning may remove part of the water repellency and the fabric should receive an application of an air-curing fluorocarbon water repellent treatment, such as 303 Hi Tech Fabric Guard, if water repellency is a factor - see page 149.

Sunbrella® is made from 100% solution dyed acrylic fiber which is thermoplastic. **DO NOT SUBJECT TO EXCESSIVE HEAT.** When Sunbrella® fabric is stored, it should be cleaned, allowed to air dry and stored in a dry, well ventilated area.

303



See Tools Section
Pages 133-150



Sunbrella® Acrylic Fabrics



Sunbrella® - Stripes, Casual Furniture, Solids, Textures and Linens

- ▲ Contents: 100% Solution Dyed Acrylic.
- ▲ Weight: Approximately 271gsm/8.0oz/sq yd.
- ▲ Width: 1371mm/54 inches.



Sunbrella® - Comfort Sling

- ▲ Contents: 100% Solution Dyed Acrylic/Polyester yarns.
- ▲ Weight: Approximately 475gsm/14.0oz/sq yd.
- ▲ Width: 1371mm/54 inches.

Sunbrella® - Furniture Grade

- ▲ A lighter weight version of Sunbrella's 100% solution dyed acrylic.
- ▲ Resists UV, mildew, rot and atmospheric chemicals.
- ▲ Limited 2 or 3 year warranty.
- ▲ Colors available against special order.
- ▲ Weight: 271gsm/8oz/sq yd.



Part No.	Width: mm/in		Roll Length: m/yd	
FURNITURE	1370	54	32 - 50	35 - 55

Sunbrella® Limited Warranties from Glen Raven Mills Inc.

For Sunbrella® Awning, Marine, Plus and Firesist.

This warranty is valid only if the accompanying certificate is completed and mailed within 10 days of installation.

What is covered? This warranty covers the fabric becoming unserviceable because of loss of color or strength from normal exposure conditions, including sunlight, mildew, rot and atmospheric chemicals. It does not cover labor and installation supplied by the dealer.

How long is the coverage period? The warranty runs for 5 years from the date of original installation.

What will Glen Raven do? Glen Raven will supply new fabric free to replace the fabric which becomes unserviceable.

How can you get service? Call the dealer from whom you purchased the product to inspect the installation. Or call another Sunbrella® dealer listed in the Yellow Pages under "Awnings & Canopies" or "Boat Tops & Covers". The dealer will contact Glen Raven and secure replacement fabric for you.

How does state law apply? This warranty gives you specific legal rights and you may also have other rights which vary from state to state.

For Sunbrella® Casual Furniture & Umbrella Fabric.

This warranty is valid only if a sample of the fabric and a copy of the bill for the item purchased is submitted.

How long is the coverage period?

The warranty coverage runs for 3 years from the date of original purchase.

For Sunbrella® Comfort Sling® Fabrics.

This warranty is valid only if a sample of the fabric and a copy of the bill for the item purchased is submitted.

How long is the coverage period?

The warranty coverage runs for 2 years from the date of original purchase.

SeaMark Marine Fabric

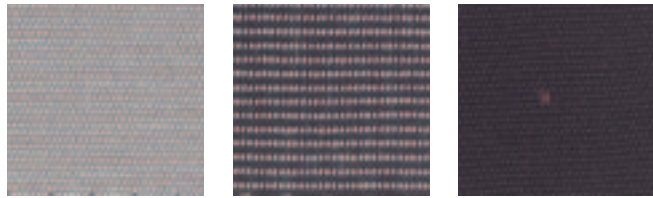
Color Availability



Hemlock Tweed

Hunter Tweed

Dubonnet Tweed



Cadet Gray

Charcoal Tweed

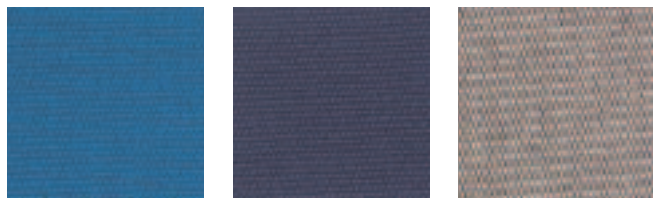
Black



Linen Tweed

Jockey Red

Mediterranean Tweed



Pacific Blue

Navy Blue

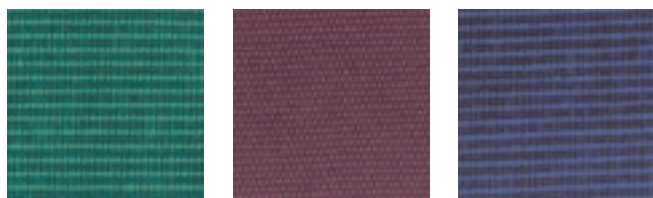
Toast



Captain Navy

Forest Green

Oyster



Teal Tweed

True Burgundy

Royal Blue Tweed



Taupe Tweed



SeaMark Marine Fabric

- ▲ Best of both worlds - a beautiful color fast fabric with the added durability of vinyl.
- ▲ Sunbrella woven acrylic on the top side for UV durability and vibrant color.
- ▲ Marine grade vinyl with textured embossing on the bottom side to color match the acrylic.
- ▲ Waterproof.
- ▲ Abrasion resistant on vinyl side.
- ▲ Weight: 509gsm/15oz/sq yd.



Part No.	Color	Width: mm/in	Av Roll Length: m/yd
F0400A82Y	Hemlock Tweed	1520 60	45.7 50
F0400A86Y	Hunter Tweed	1520 60	45.7 50
F0400A96Y	Dubonnet Tweed	1520 60	45.7 50
F0400A97Y	Cadet Gray	1520 60	45.7 50
F0400A98Y	Charcoal Tweed	1520 60	45.7 50
F0400A99Y	Black	1520 60	45.7 50
F0400A09Y	Linen Tweed	1520 60	45.7 50
F0400A10Y	Jockey Red	1520 60	45.7 50
F0400A17Y	Mediterranean Tweed	1520 60	45.7 50
F0400A18Y	Pacific Blue	1520 60	45.7 50
F0400A22Y	Navy Blue	1520 60	45.7 50
F0400A28Y	Toast	1520 60	45.7 50
F0400A33Y	Captain Navy	1520 60	45.7 50
F0400A37Y	Forest Green	1520 60	45.7 50
F0400A42Y	Oyster	1520 60	45.7 50
F0400A44Y	Teal Tweed	1520 60	45.7 50
F0400A75Y	True Burgundy	1520 60	45.7 50
F0400A79Y	Royal Blue Tweed	1520 60	45.7 50
F0400A40Y	Taupe Tweed	1520 60	45.7 50

Note: Color representation from 4-color process is for reference purposes only. Please inquire for color sample of actual fabric.

Acrylic Binding Tape

Center Fold Acrylic Binding Tape: 7/8 inch

- ▲ Woven acrylic binding tape with a naturally folding center, finished to 22.2mm/ 7/8 inch width.
- ▲ Binding for sail covers, cushions, tents, canopies, dodgers and biminis.
- ▲ Woven with Sunbrella acrylic yarns.
- ▲ Available only on full rolls.



Beige

Jockey Red

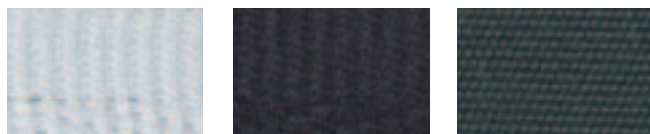
Burgundy



Black

Persian Green

Gray



White

Navy Blue

Forest Green



Pacific Blue - Actual Pattern

Part No.	Color	Width: mm/in	Roll Length: m/yd
E095BI	Beige	22.2 7/8	183 200
E095BU	Pacific Blue	22.2 7/8	183 200
E095BG	Burgundy	22.2 7/8	183 200
E095BK	Black	22.2 7/8	183 200
E095PG	Persian Green	22.2 7/8	183 200
E095GY	Gray	22.2 7/8	183 200
E095WT	White	22.2 7/8	183 200
E095NV	Navy Blue	22.2 7/8	183 200
E095FGR	Forest Green	22.2 7/8	183 200
E095RD	Jockey Red	22.2 7/8	183 200

Acrylic Binding Tape - 3/4"

- ▲ Softly woven binding tape to conform around corners nicely.
- ▲ Finished to 19mm/ 3/4 inch width.
- ▲ Binding for sail covers, cushions, tents and canopies.
- ▲ Woven with Sunbrella acrylic yarns.
- ▲ Available only on full rolls.



Pacific Blue

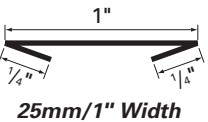
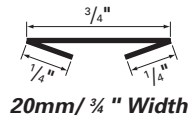
Black

White

Part No.	Color	Width: mm/in	Roll Length: m/yd
E090BU	Pacific Blue	19 3/4	91 100
E090BK	Black	19 3/4	91 100
E090WT	White	19 3/4	91 100

Double Fold Bias Acrylic Binding: 3/4" & 1"

- ▲ Double edge turned and glued fabric.
- ▲ Made from Sunbrella® marine fabric.
- ▲ Binding for sail covers, tents, canopies, dodgers and biminis.
- ▲ Available only on full rolls of 91.4m/100 yards.
- ▲ Finish width E098 is 19mm/ 3/4 inch.
- ▲ Finish width of E097 is 25.4mm/1 inch.



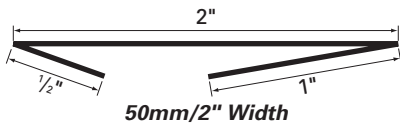
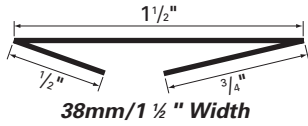
Part No. 20mm/3/4" Width	Part No. 25mm/1" Width	Color
E098WT	E097WT	White
E098BK	E097BK	Black
E098BU	E097BU	Pacific Blue
E098GY	E097GY	Cadet Gray
E098RB	E097RB	Royal Blue
E098OY	E097OY	Oyster
E098CNV	E097CNV	Captain Navy
E098NV	E097NV	Navy
E098FGR	E097FGR	Forest Green
E098BG	E097BG	Burgundy
E098LT		Linen Tweed
E098RD		Jockey Red
E098LN	E097LN	Linen
E098PSGR	E097PSGR	Persian Green
E098TST	E097TST	Toast
E098BI		Beige
E098ERGR		Erin Green
E098MBU	E097MBU	Mediterranean Blue
E098DTD		Dubonnet Tweed
E098CCGY	E097CCGY	Charcoal Gray
E098HTWD	E097HTWD	Hemlock Tweed
E098SR	E097SR	Silver
E098SB		Sapphire Blue
E098LRD		Logo Red
E098MTD	E097MTD	Mediterranean Tweed
	E097WBR	Walnut Brown
	E097TUBR	True Brown



Sunbrella® Facings & Bindings

Sunbrella Custom Facings

- ▲ 100% solution dyed acrylic.
- ▲ Guaranteed for 5 years.
- ▲ Pre-folded and bonded to provide a clean, neat finished edge.
- ▲ Available in 2 sizes: 50mm/2" facing has 25.4mm/1" & 12.7mm/½" folds.
- 38mm/1 ½" facing has 12.7mm/½" & 19mm/¾" folds.
- ▲ Available only on full reels of 55m/60 yards.

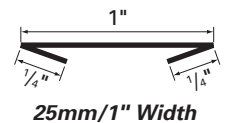


38mm/1½ inch Part No	50mm/2 inch Part No	Color
E091BK	E092BK	Black
E091NV	E092NV	Navy
E091BU	E092BU	Pacific Blue
E091TST	E092TST	Toast
E091GY	E092GY	Cadet Grey
E091BG	E092BG	Burgundy
E091LN	E092LN	Linen
E091RB	E092RB	Royal Blue
E091CNV	E092CNV	Captain Navy
E091FGR	E092FGR	Forest Green



Double Fold Straight Cut

- ▲ 100% solution dyed Sunbrella acrylic.
- ▲ Guaranteed for 5 years.
- ▲ Pre-folded and bonded to provide a clean neat finished edge.
- ▲ 25mm/1" with 8mm/⅝" folds.



Part No.	Color
E094BK	Black
E094NV	Navy
E094BU	Pacific Blue
E094TST	Toast
E094GY	Cadet Gray
E094BG	Burgundy
E094LN	Linen
E094RB	Royal Blue
E094CNV	Captain Navy
E094FGR	Forest Green

Note: Color representation from 4-color process is for reference purposes only. Please inquire for color sample of actual fabric.

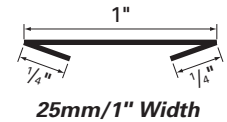
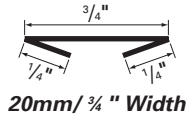
Stamoid Bindings & Facings



Canvas Designers Inc, FL

Stamoid® Vinyl Double Fold 3/4" & 1" Bias Binding Tape

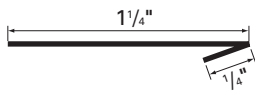
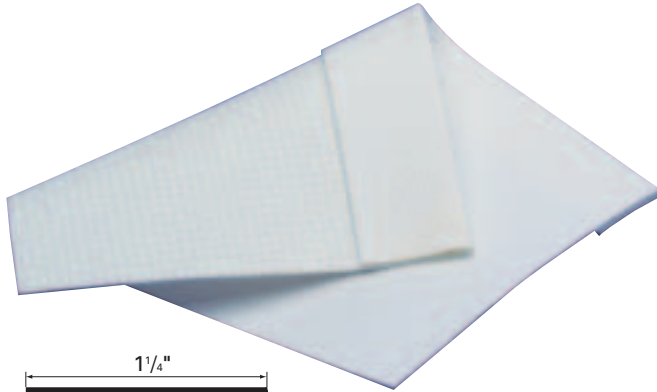
- ▲ Now, premium quality Stamoid vinyl is double folded into 20mm/ 3/4 inch bias binding tape. Stamoid vinyl has outstanding UV resistance, is dirt repellent and washable and is waterproof and treated against mildew.
- ▲ Matching binding is used with Stamoid to trim or bind cushions, canopies, dodgers and biminis etc.
- ▲ Binding is sold in full reels only.



Part No. 20mm/3/4" Width	Part No. 25mm/1" Width	Color	Average Roll Length: m/yd	
E085BK	E086BK	Black	91	100
E085CR	E086CR	Cream	91	100
E085IV	E086IV	Ivory	91	100
E085RB		Royal Blue	91	100
E085SD		Sand	91	100
E085SW	E086SW	Snow White	91	100
E085WT	E086WT	White	91	100
E085EG		Evergreen	91	100
E085NV		Navy	91	100

Stamoid® Single Fold Bias Binding Tape

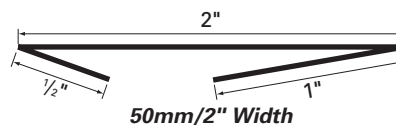
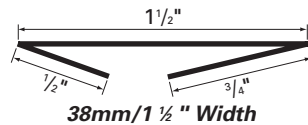
- ▲ Super light Stamoid vinyl is bias cut with a single fold.
- ▲ Finished width 30mm/1 1/4 inch.
- ▲ Used for binding on zippers, dodgers and bimini.



Part No.	Color	Width: mm/in	Roll Length: m/yd
E089BK	Black	30 1 1/4	91 100
E089IV	Ivory	30 1 1/4	91 100
E089WT	White	30 1 1/4	91 100
E089CR	Cream	30 1 1/4	91 100

Stamoid® Facing - 1 1/2" & 2"

- ▲ Super-light Stamoid vinyl is double folded into a finished width of 38mm/1 1/2 inch and 50mm/2 inch.
- ▲ Matching facing is used around large clear vinyl windows to save time and material.
- ▲ Facing sold in full reels only.



Part No. 38mm/1 1/2"	Part No. 50mm/2"	Color	Average Roll Length: m/yd	
E084BK	E083BK	Black	45.5	50
E084CR	E083CR	Cream	45.5	50
E084IV	E083IV	Ivory	45.5	50
E084RB	E083RB	Royal Blue	45.5	50
E084SW	E083SW	Snow White	45.5	50
E084WT	E083WT	White	45.5	50

STAMOID



Stamoid

Color Availability



Stamoid® Light

- ▲ Super light weight vinyl coated woven polyester fabric comes with a 5 year warranty.
- ▲ Standard width is 1.5m/59 inches, but 2.03m/80 inch goods are also available.
- ▲ Outstanding UV resistance.
- ▲ Dirt repellent and washable.
- ▲ Waterproof and treated against mildew.
- ▲ Good tensile strength.
- ▲ Flexible.
- ▲ Uses: Console covers, spray hoods, convertible tops, camper tops, cockpit covers, bimini tops, mooring covers and many other protective applications.
- ▲ Weight: 254gsm/8.3oz/sq yd.

Part No. 1.5m/59"	Part No. 2.03m/80"	Color	Average Roll Length: m/yd	
FH159WT	FH180WT	White	50	54
FH159IV	FH180IV	Ivory	50	54
FH159RB	FH180RB	Royal Blue	50	54
FH159NV		Navy Blue	50	54
FH159AQ		Aquamarine	50	54
FH159OG		Ocean Green	50	54
FH159LB		Light Blue	50	54
FH159CR	FH180CR	Cream	50	54
FH159GY	FH180GY	Pearl Gray	50	54
FH159SD	FH180SD	Sand	50	54
FH159SW	FH180SW	Snow White	50	54
	FH180BK	Black	50	54
FH159SR		Silver	50	54



Stamoid® Double Coat - Top

- ▲ Superior double coated vinyl with woven polyester fabric. Comes with a 5 year warranty.
- ▲ Outstanding UV resistance.
- ▲ Dirt repellent and washable.
- ▲ 100% waterproof and treated against mildew.
- ▲ Good tensile and tear strength.
- ▲ Flexible.
- ▲ Uses: Console covers, spray hoods, convertible tops, camper tops, cockpit covers, bimini tops, mooring covers and many other protective applications.
- ▲ Weight: 441gsm/12.7oz/sq yd.



Part No. 1.5m/59"	Part No. 2.03m/80"	Color	Average Roll Length: m/yd	
FH259WT	FH280WT	White	50	54
FH259IV		Ivory	50	54
FH259CR	FH280CR	Cream	50	54
FH259GY		Pearl Gray	50	54
FH259NV		Navy Blue	50	54
FH259SD		Sand	50	54
FH259SW	FH280SW	Snow White	50	54
FH259BK	FH280BK	Black	50	54
FH259BU		Blue	50	54
FH259EG		Evergreen	50	54
FH259RB		Royal Blue	50	54

Note: Color representation from 4-color process is for reference purposes only. Please inquire for color sample of actual fabric.



Stamoid Heavy Cover

- ▲ Superior heavy weight vinyl single coated woven 1100 dtex polyester fabric comes with a 5 year warranty.
- ▲ Excellent UV resistance.
- ▲ Dirt repellent and washable.
- ▲ Very good tensile and tear strength.
- ▲ Flexible.
- ▲ Uses: Winter covers, mooring covers anywhere that requires strong protection.
- ▲ Weight: 13.7oz sq yd / 465gsm.



Part No.	Color	Width: mm/in		Roll Length: m/yd	
FH184WT	White	2600	102	30	32
FH184GY	Pearl Gray	2600	102	30	32

Stamoid Open - 102 inch

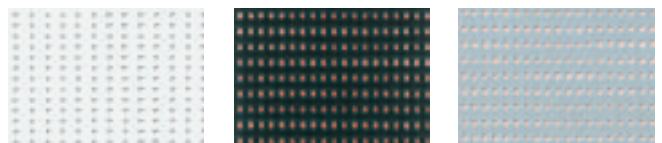
- ▲ Superior heavyweight vinyl double coated woven 110dtex polyester fabric come with 5 year warranty.
- ▲ Excellent tensile and tear strength.
- ▲ Dirt repellent and washable.
- ▲ Uses: Bimini, dodgers, maxi yachts.
- ▲ Weight: 19.1oz sq yd / 650gsm.



Part No.	Color	Width: mm/in		Roll Length: m/yd	
FH182WT	White Open	2600	102	30	32
FH182SW	Snow White Open	2600	102	30	32

Stamoid Soltis 86-Mesh

- ▲ Premium vinyl coated, flexible 1100 dtex polyester mesh.
- ▲ Excellent tensile and tear strength.
- ▲ Flexible.
- ▲ Dirt repellent and washable.
- ▲ Uses: Wind & sun screens, privacy curtains and shade awnings to eliminate approximately 86% of the sun's rays.
- ▲ Weight: 11.2oz sq yd / 380gsm.



Part No.	Color	Width: mm/in		Roll Length: m/yd	
FH286WT	White	1770	70	50	54
FH286BK	Black	1770	70	50	54
FH286GY	Gray	1770	70	50	54

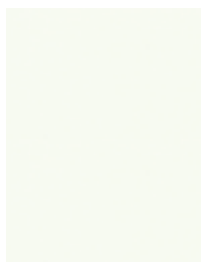
Note: Color representation from 4-color process is for reference purposes only. Please inquire for color sample of actual fabric.

Vinyl Fabrics

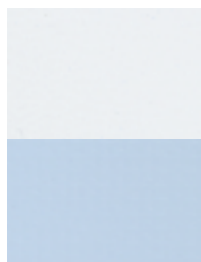
Aqua-Tex II - Boat Top Vinyl

- ▲ Waterproof and mildew resistant.
- ▲ Vinyl laminated.
- ▲ Flame resistant.
- ▲ Ultraviolet & tear resistant.
- ▲ Easy to clean.
- ▲ 408gsm/12oz/sq yd.
- ▲ Use: bimini covers, dodgers, biminis side curtains, mooring covers.

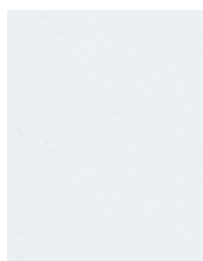
aqua-tex II



Ivory/Ivory



White/Blue

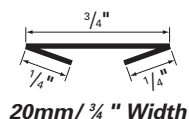


White/White

Part No.	Color	Width: mm/in	Roll Length: m/yd
FH362II	Ivory/Ivory	1580 62	41 45
FH362WB	White/Blue	1580 62	41 45
FH362WW	White/White	1580 62	41 45

Vinyl Bias Binding Tape: 3/4 inch

- ▲ "Topline" marine grade vinyl double folded bias binding tape, finished to 20mm/ 3/4 inch width.
- ▲ Features: Mildew treated for outdoor use, Good tear and tensile strength.
- ▲ Uses: Binding for cushions, canopies, dodgers and biminis.



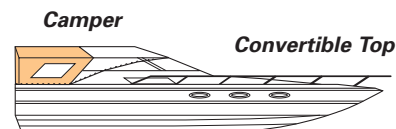
Part No.	Color	Width: mm/in	Roll Length: m/yd
E075WT	White	20 3/4	91 100
E075BK	Black	20 3/4	91 100



Haartz Marine Topping

- ▲ Vinyl laminated with light gray 100% polyester backing.
- ▲ Features: UV and mildew resistant, high tear and tensile strength, waterproof and rot resistant, easy to clean, dimensionally stable.
- ▲ Uses: convertible tops, boom tents, dodgers, side and aft curtains, mooring covers, hatch covers, equipment covers and many other protective applications.

HAARTZ
MANUFACTURERS OF ENGINEERED COATING MATERIALS



Part No.	Color	Weight: gsm/oz/sq yd	Width: mm/in	Av Roll Length: m/yd
FH154WT	Off White/Lt Gray	610 18	1370 54	55 60

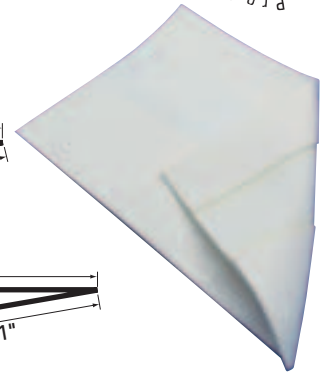
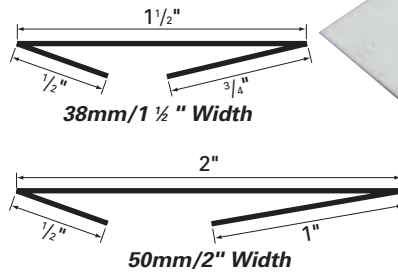
Note: Color representation from 4-color process is for reference purposes only. Please inquire for color sample of actual fabric.

Vinyl Binding Tape & Weblon®



Weblon Facing - 1 1/2" & 2"

- ▲ Weblon polyester laminated vinyl.
- ▲ Matching binding is used around large clear vinyl windows to save time and money.
- ▲ Pre-folded and bonded to provide a clean, neat finished edge in 38mm/1 1/2" and 50mm/2" width.
- ▲ Facing sold in full reels only.



Part No.	Part No.	Color	Average Roll Length: m/yd	
E082WW	E087WW	White / White	45.5	50

Weblon - Regatta Yacht Fabric

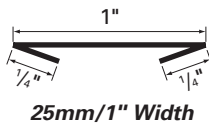
Polyester laminated vinyl with Rain Kleen finish.

- ▲ 5 year warranty.
- ▲ Pastel lining relieve glare.
- ▲ Flame retardant, resists tears and abrasion.
- ▲ Easy to clean and store.
- ▲ Waterproof and mildew resistant.
- ▲ Use boat top, bimini.
- ▲ Weight 475gsm/13oz/sq yd.



Weblon Double Fold - 1" Straight Binding

- ▲ Weblon polyester laminated vinyl.
- ▲ Matching binding is used with Weblon.
- ▲ Binding is sold in full reels only.



Part No.	Description	Average Roll Length: m/yd	
E081WW	25mm/1" Straight Cut White / White	91	100



Part No.	Color	Width: mm/in		Roll Length: m/yd	
FH462DW	White-Driftwood	1570	62	45.7	50
FH462II	Ivory-Ivory	1570	62	45.7	50
FH462RBW	White-Royal Blue	1570	62	45.7	50
FH462BK	Black	1570	62	45.7	50
FH462WB	White-Mist Blue	1570	62	45.7	50
FH462WW	White	1570	62	45.7	50

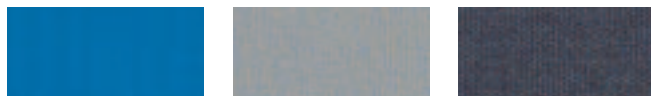
Note: Color representation from 4-color process is for reference purposes only. Please inquire for color sample of actual fabric.

Polyester Cover Fabrics

Top Gun Polyester Cover Cloth

TOP GUN

- ▲ Polyester duck base fabric with a specially formulated polymeric coating that will not harden, crack or peel after outdoor exposure or when subjected to temperatures below 0°F.
- ▲ Stay-true, long lasting colors.
- ▲ Super high strength with great abrasion resistance.
- ▲ Stable fabric with maximum stretch or shrinkage less than 1%.
- ▲ UV and mildew resistant.
- ▲ Water repellent, but permeable to water vapour.
- ▲ Will not trap excess moisture.
- ▲ 5 year manufacturers warranty.
- ▲ Uses: Biminis, tops, trailer covers, winter covers.
- ▲ Weight: 373gsm/11oz/sq yd.



Caribbean Blue

Seagull Gray

Navy Blue



Forest Green

Aquamarine

Black



Indian Birch

Arctic White

Teal



Burgundy

Sunset Red

Hemp Beige



Buckskin Tan

Harbour Blue

Charcoal Gray

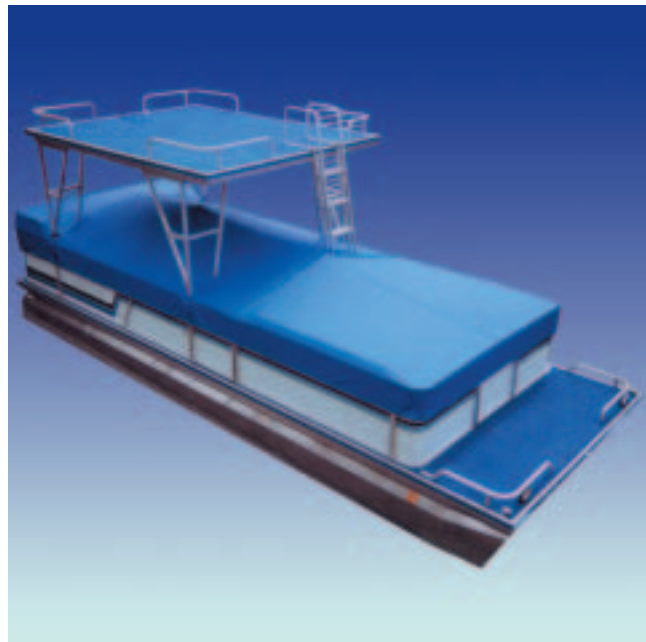


Sand

Royal Blue

Turquoise

Part No.	Color	Width: mm/in		Av Roll Length: m/yd	
F0300A18Y	Caribbean Blue	1570	62	45.7	50
F0300A97Y	Seagull Gray	1570	62	45.7	50
F0300A22Y	Navy Blue	1570	62	45.7	50
F0300A46Y	Forest Green	1570	62	45.7	50
F0300A89Y	Aquamarine	1570	62	45.7	50
F0300A60Y	Black	1570	62	45.7	50
F0300A14Y	Indian Birch	1570	62	45.7	50
F0300A00Y	Arctic White	1570	62	45.7	50
F0300A44Y	Teal	1570	62	45.7	50
F0300A75Y	Burgundy	1570	62	45.7	50
F0300A10Y	Sunset Red	1570	62	45.7	50
F0300A67Y	Hemp Beige	1570	62	45.7	50
F0300A74Y	Buckskin Tan	1570	62	45.7	50
F0300A90Y	Harbour Blue	1570	62	45.7	50
F0300A98Y	Charcoal Gray	1570	62	45.7	50
FH0300A66Y	Sand	1570	62	45.7	50
FH0300A79Y	Royal Blue	1570	62	45.7	50
FH0300A85Y	Turquoise	1570	62	45.7	50



Use and care of TOP GUN Marine Polyester



CARE: TOP GUN fabric is finished to resist surface growth of mildew, but it should not be folded and stored while wet. Accumulations of dirt and bird droppings which can support the growth of mildew and result in staining, should be removed periodically in the following ways.

CLEANING: DO NOT USE DETERGENTS ON TOP GUN FABRIC! TOP GUN Fabric should be cleaned with a solution of SOAP in warm water (100°F). Use a soft bristle brush to lift soil embedded in the fabric and rinse thoroughly with clear water to remove both soil and soap residue.

NOTE: Cleaning may result in the reduction of water repellency, application of Aqua-Tite silicone water repellent is recommended, when the fabric has dried thoroughly. Other products are not recommended and may cause damage to the coating and void the warranty.



Note: Color representation from 4-color process is for reference purposes only. Please inquire for color sample of actual fabric.

Polyester Cover Fabrics

Soft Touch by Odyssey

ODYSSEY

- ▲ 100% woven polyester Odyssey with a light weight, non-woven, soft fuzzy polyester backing.
- ▲ Abrasion resistant.
- ▲ Weatherproof.
- ▲ Backing provides excellent gel-coat or varnish protection.
- ▲ Uses: boat & trailer covers.
- ▲ 405gsm/12.5oz/sq yd.



Part No.	Color	Width: mm/in	Av Roll Length: m/yd
F0805A18Y	Caribbean Blue	1520 60	45.7 50
F0805A88Y	Gray	1520 60	45.7 50
F0805A60Y	Black	1520 60	45.7 50
F0805A46Y	Forest Green	1520 60	45.7 50
F0805A44Y	Teal	1520 60	45.7 50
F0805A65Y	Taupe	1520 60	45.7 50
F0805A75Y	Burgundy	1520 60	45.7 50
F0805A00Y	White	1520 60	45.7 50
F0805A14Y	Birch	1520 60	45.7 50
F0805A79Y	Royal Blue	1520 60	45.7 50
F0805A97Y	Charcoal Gray	1520 60	45.7 50



Odyssey Polyester Cover Cloth

ODYSSEY

- ▲ Impregnation coated, 100% woven polyester suitable for many indoor or outdoor applications.
- ▲ Mildew and UV resistant.
- ▲ Superior water and stain resistance.
- ▲ Very low shrink or stretch.
- ▲ Breathable.
- ▲ Uses: Cots, boat covers, canopies, bags and miscellaneous covers.
- ▲ Weight: 220gsm/6.5oz/sq yd.



Caribbean Blue

Silver Gray

Royal Blue



White

Red

Birch



Teal

Forest Green

Black



Burgundy

Turquoise

Harbour Blue



Charcoal Gray

Sand

Taupe



Lakeside Blue

Brown

Part No.	Color	Width: mm/in	Av Roll Length: m/yd
F0800A18Y	Caribbean Blue	1630 64	68.6 75
F0800A88Y	Silver Gray	1630 64	68.6 75
F0800A79Y	Royal Blue	1630 64	68.6 75
F0800A00Y	White	1630 64	68.6 75
F0800A10Y	Red	1630 64	68.6 75
F0800A14Y	Birch	1630 64	68.6 75
F0800A44Y	Teal	1630 64	68.6 75
F0800A46Y	Forest Green	1630 64	68.6 75
F0800A60Y	Black	1630 64	68.6 75
F0800A75Y	Burgundy	1630 64	68.6 75
F0800A85Y	Turquoise	1630 64	68.6 75
F0800A90Y	Harbour Blue	1630 64	68.6 75
F0800A97Y	Charcoal Gray	1630 64	68.6 75
F0800A41Y	Aquamarine	1630 64	68.6 75
F0800A20Y	Lakeside Blue	1630 64	68.6 75
F0800A62Y	Brown	1630 64	68.6 75
F0800A66Y	Sand	1630 64	68.6 75
F0800A65Y	Taupe	1630 64	68.6 75
F0800A20Y	Lakeside Blue	1630 64	68.6 75
F0800A62Y	Brown	1630 64	68.6 75

Note: Color representation from 4-color process is for reference purposes only. Please inquire for color sample of actual fabric.

Polyester Cover Fabrics

Top Notch - Solution Dyed Polyester

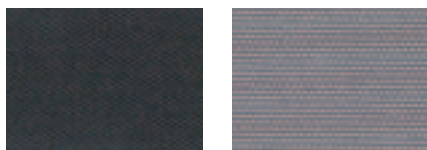
- ▲ Solution dyed 840 denier polyester.
- ▲ Colorfast and UV resistant.
- ▲ Dimensionally stable.
- ▲ Exceptional tear strength.
- ▲ Durable and abrasion resistant finish.
- ▲ Fluorocarbon finish for excellent water repellancy.
- ▲ 5 year warranty.
- ▲ Weight: 373gsm/11.0oz/sq yd.



Forest Green

Lakeside Blue

Sand



Black

Sea Gull Gray

Part No.	Color	Width: mm/in	Length: m/yd
F0200A46Y	Forest Green	1520 60	45.7 50
F0200A20Y	Lakeside Blue (Light)	1520 60	45.7 50
F0200A68Y	Sand	1520 60	45.7 50
F0200A60Y	Black	1520 60	45.7 50
F0200A97Y	Sea Gull Gray	1520 60	45.7 50

Topyssey - Polyester Cover Cloth

- ▲ UV resistant - 450 denier woven polyester.
- ▲ Dimensionally stable.
- ▲ Exceptional tear strength.
- ▲ Durable and abrasion resistant finish.
- ▲ Acrylic coating for excellent water repellancy.
- ▲ Clear back coating to prevent transfer of colors.
- ▲ Weight: 288gsm/8.5oz/sq yd.
- ▲ Topyssey is lighter than Top Gun but heavier than Odyssey.

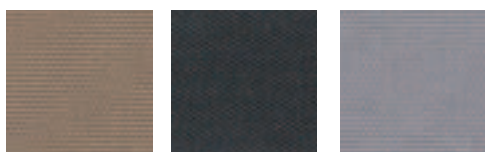


Forest Green

Royal Blue

Caribbean Blue

Taupe



Hemp Beige

Black

Sea Gull Gray

Part No.	Color	Width: mm/in	Length: m/yd
F0500A46Y	Forest Green	1520 60	45.7 50
F0500A79Y	Royal Blue	1520 60	45.7 50
F0500A18Y	Caribbean Blue	1520 60	45.7 50
F0500A74Y	Taupe	1520 60	45.7 50
F0500A67Y	Hemp Beige	1520 60	45.7 50
F0500A60Y	Black	1520 60	45.7 50
F0500A97Y	Sea Gull Gray	1520 60	45.7 50



Aqua-Tite - Silicone Water Repellent

- ▲ Premium grade heavy duty water repellent solution.
- ▲ Restores the water repellency of cotton and synthetic fabrics.
- ▲ Neutral color; however may impart a slightly darker, richer tone to some light colored fabrics.
- ▲ Use on fabrics of acrylic, cotton, nylon, polyester and cotton blends.
- ▲ For tents, awnings, boat covers and canvas fabrics.
- ▲ One gallon cover approx 200 sq ft / 18.5 sq m.
- ▲ Can be brushed, sprayed or rolled.



Special Shipping



Part No.	Description	Liquid Measure: ml/floz	Case Qty
M045	Quart	946 32	12
M046	Gallon	3785 128	8

Upholstery & Cover Fabrics

Evolution 4

- ▲ Popular fabric for automobile and marine cover applications.
- ▲ Water resistant and breathable.
- ▲ A patented 4 layer fabric which helps to prevent scratches and dings.
- ▲ Blocks damaging UV rays.
- ▲ Ultra soft inner fabric layer is non-abrasive.
- ▲ Four year warranty.
- ▲ Uses: Boat and car covers, protection fabric.
- ▲ Weight: 163 gsm / 4.8oz / sq yd.



EVOLUTION FABRIC



Part No.	Color	Width: mm/in		Length: m/yd	
F0250A97Y	Gray	1397	55	320	350

Marine Finish - Cotton Army Duck

- ▲ 100% cotton marine finish, boat shrunk, 2ply x 2ply construction Army Duck. Designed for not more than 2% exposure shrinkage.
- ▲ Flat folded.
- ▲ Water repellent and mildew resistant.
- ▲ Mineral dyed.
- ▲ Uses: Trailering covers, mooring covers, bags.



Natural

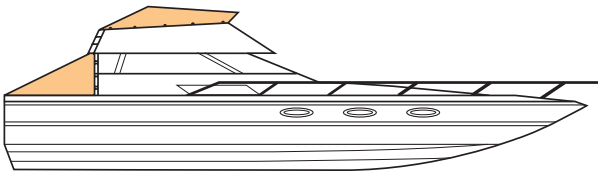


Pearl Gray

Part No.	Color	Weight: gsm/oz/sq yd		Width: mm/in		Av Roll Length: m/yd	
FH100NT	Natural	339	10	910	36	45	50
FH100PL	Pearl Gray	339	10	910	36	45	50
FH130NT	Natural	441	13	910	36	45	50
FH130PL	Pearl Gray	441	13	910	36	45	50

Bainbridge Dacron Cover Cloth

- ▲ Woven polyester with a silicone water repellent finish.
- ▲ Uses: Splash curtains, mooring covers, enclosures, side panels.



Part No.	Style	Weight: gsm/oz sq yd		Width: mm/in		Av Roll Length: m/yd	
F2610G00M	Fleetboat	197	5.8	1370	54	92	100
F2620G00M	Medium	237	7.0	1370	54	92	100
F2630G00M	Heavy	302	8.9	1370	54	92	100

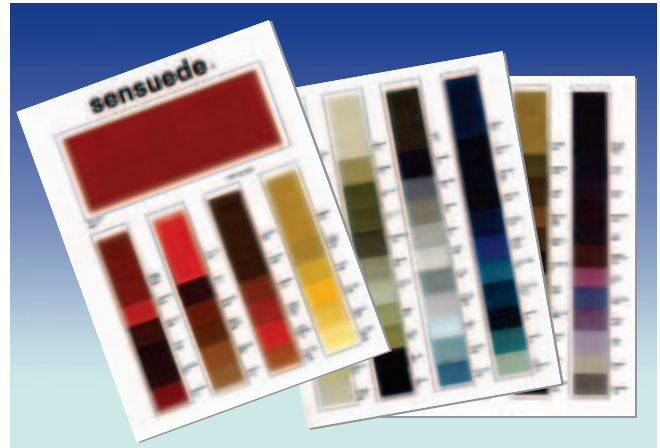
Sensuede®

Superior quality man-made suede, ideal for upholstery and interior applications. The easiest suede to clean and care for.

- ▲ Sensuede is resistant to fade.
- ▲ Easy to clean, washable.
- ▲ 88% polyester and 12% polyurethane.
- ▲ Flammability passes Calif Bulletin 117, NFPA-260.
- ▲ Excellent abrasion resistance, exceeds 200,000 double rubs.
- ▲ Excellent color fastness.
- ▲ Easy to sew, hold a stitch.
- ▲ Weight: 275gsm/13.2 oz per linear yard.



Imagine it in **sensuede**



Part No.	Description	Width: mm/in		Roll Length: m/yd	
FH656	Sensuede	1420	56	30	33

Sunbrella® - Furniture Grade

- ▲ A lighter weight version of Sunbrella's 100% solution dyed acrylic.
- ▲ Resists UV, mildew, rot and atmospheric chemicals.
- ▲ Limited 2 or 3 year warranty.
- ▲ Colors available against special order.
- ▲ Weight: 271gsm/8oz/sq yd.



Part No.	Width: mm/in		Roll Length: m/yd	
FURNITURE	1370	54	32 - 50	35 - 55



Vinyl Upholstery Material

Catalina - Marine Upholstery Vinyl

- ▲ Premium UV protected marine grade vinyl upholstery fabric.
- ▲ Leather like feel.
- ▲ Special backing allows for easier tailorability.
- ▲ Excellent durability.
- ▲ Designed to meet California Flammability Regulation 117; Section E.
- ▲ Mildew resistant and UV stabilized.
- ▲ Passes 1000 hour weather meter.
- ▲ Weight: 725gsm/21oz/sq yd.



Part No.	Color	Width: mm/in	Av Roll Length: m/yd
F0930A008	Killer White	1370 54	36.6 40
F0930A048	Shell Off-White	1370 54	36.6 40
F0930A068	Sand	1370 54	36.6 40
F0930A088	Pelican	1370 54	36.6 40
F0930A108	Coral Red	1370 54	36.6 40
F0930A188	Channel Blue	1370 54	36.6 40
F0930A228	Marlin Blue	1370 54	36.6 40
F0930A358	Gold	1370 54	36.6 40
F0930A458	Teal	1370 54	36.6 40
F0930A508	Purple Alabaster	1370 54	36.6 40
F0930A518	Violet	1370 54	36.6 40
F0930A608	Black	1370 54	36.6 40
F0930A628	Dark Gray	1370 54	36.6 40
F0930A658	Light Gray	1370 54	36.6 40

Catalina marine upholstery vinyl is available in channel.



Marine Headliner

- ▲ Marine grade UV protected vinyl.
- ▲ Apply with adhesives.
- ▲ Available with standard vinyl or vinyl laminated to 6.4mm/ ¼" clickable foam.
- ▲ Available perforated or flat.



Headliner - White Perforated Vinyl

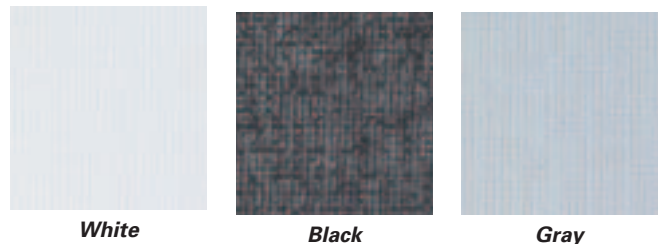
Part No.	Style	Width: mm/in	Av Roll Length: m/yd
FH440WTP	-	1370 54	45.7 50
FH441WTPF	¼" Foam	1370 54	22.8 25

Headliner - White Flat Vinyl

Part No.	Style	Width: mm/in	Av Roll Length: m/yd
FH442WT	-	1370 54	45.7 50
FH443WTF	¼" Foam	1370 54	22.8 25

Nautolex - Underlining

- ▲ Lightweight vinyl coated polyester fabric designed for bottom side of cushions, seats and upholstery to let water drain out and air to circulate.
- ▲ Weight 146gsm/4.3oz/sq yd.
- ▲ Breathes to release moisture, and resist rot and mildew.



Part No.	Color	Width: mm/in	Av Roll Length: m/yd
FH454WT	White	1370 54	91.4 100
FH454BK	Black	1370 54	91.4 100
FH454GY	Gray	1370 54	91.4 100

Note: Color representation from 4-color process is for reference purposes only. Please inquire for color sample of actual fabric.

Vinyl Upholstery Material



Nautolex

- ▲ Premium UV protected marine grade expanded vinyl upholstery fabric.
- ▲ 600 hour UV resistance.
- ▲ The unique Nautolex formula with PreFixx ensures an overall protective performance.
- ▲ Expanded vinyl has a fabric mesh backing for reduced stretch.
- ▲ By the same manufacturer as Boltaflex®.
- ▲ Designed to meet California Flammability Regulation 117-75, Sec.E.
- ▲ Excellent tear strength.
- ▲ Outstanding stain resistance and cleanability.
- ▲ Superior abrasion resistance.
- ▲ Resistant to common scuffing and burnishing.
- ▲ Eliminates blocking and prevents premature aging.
- ▲ Mildew resistant.
- ▲ Available: As "Expanded vinyl" with fabric knit backing or "Non-Woven vinyl" with soft, white fleece backing.
- ▲ Weight: 678gsm/20oz/sq yd.



Nautolex Hidem Gimp

- ▲ Hidem Gimp is made from premium marine grade Nautolex vinyl with PreFixx specially folded onto itself and sewn at both edges to form a 15.9mm/ 5/8" binding used to hold/hide staples or tacks and serves to trim/bind fabricated piece.
- ▲ Hidem is sold full reels only.
- ▲ Use with Nautolex or Nautolex Channel upholstery fabrics.



Part No.	Color	Width: mm/in	Av Roll Length: m/yd
LS602WT	Mystic White	15 %	22.8 25
LS602OW	Off White	15 %	22.8 25

Nautolex Channel - Upholstery Quilting, Roll & Pleat

- ▲ Nautolex channel is made from premium marine grade Nautolex vinyl with PreFixx and 224gsm/6.6 ounce, 100% polyester batting and liner. The vinyl and the batting are placed on top of each other and put into a special press that bonds and welds all of the materials together in the form of channels. The channels in our material are 38mm/1 1/2 inches apart.
- ▲ Please note channels run perpendicular to the edge of the roll and do not extend the full distance edge to edge. The actual usable material is only 1320mm/52 inches wide.
- ▲ Weight: 916gsm/27oz/sq yd.



Part No.	Color	Width: mm/in	Av Roll Length: m/yd
F0900C008	Mystic White	1370 54	13 14
F0900C058	Off White	1370 54	13 14



Mystic White

Off-White

Light Gray



Brite Navy

Deep Blue

Lollipop Red



Hearty Burgundy

Sea Teal

Mushroom



Slate Black

Marble Green

Part No.	Color	Width: mm/in	Av Roll Length: m/yd
F0900A008	Mystic White	1370 54	27 30
F0900A058	Off-White	1370 54	27 30
F0900A978	Light Gray	1370 54	27 30
F0900A228	Brite Navy	1370 54	27 30
F0900A188	Deep Blue	1370 54	27 30
F0900A108	Lollipop Red	1370 54	27 30
F0900A758	Hearty Burgundy	1370 54	27 30
F0900A448	Sea Teal	1370 54	27 30
F0900A688	Mushroom (Lt. Tan)	1370 54	27 30
F0900A998	Slate Black	1370 54	27 30
F0900A468	Marble Green	1370 54	27 30

Note: Color representation from 4-color process is for reference purposes only. Please inquire for color sample of actual fabric.

Window Material - Sheets

Sea Flex Pressed Polished Window Material

- ▲ Excellent quality glass-clear material.
- ▲ Available only on full drums.
- ▲ Optical clarity.
- ▲ Distortion free PVC.
- ▲ Weldable, bondable and sewable.



Sea-Flex - Clear

Part No.	Gauge Thickness: mm/in		Sheet Width: mm/in		Sheet Length: mm/in		Qty Per Drum	Finish
K330/3	0.76	0.030	1270	50	2540	100	3	Clear
K330	0.76	0.030	1270	50	2540	100	15	Clear
K340/3	1.02	0.040	1270	50	2540	100	3	Clear
K340	1.02	0.040	1270	50	2540	100	10	Clear

Sea-Flex - Smoke Tint

Part No.	Gauge Thickness: mm/in		Sheet Width: mm/in		Sheet Length: mm/in		Qty Per Drum	Finish
K330/3SM	0.76	0.030	1270	50	2540	100	3	Smoke
K340/3SM	1.02	0.040	1270	50	2540	100	3	Smoke

Aquatech - Cleaner & Protectant

- ▲ Protects and cleans clear vinyl and polycarbonate.
- ▲ Does not contain ammonia or alcohol.
- ▲ Cleans, shines and protects clear vinyl while leaving a water repellent finish.



Part No.	Description	Liquid Measure: ml/floz	Case Qty
M185	Aquatech Cleaner & Protectant	473 16	12

Regalite® Flex Pressed Polished Window Material

- ▲ Best quality glass-clear PVC material.
- ▲ Regalite® is a registered trademark of Regalite Plastics Corporation, O'Sullivan Corporation.



Part No.	Gauge Thickness: mm/in		Sheet Width: mm/in		Sheet Length: mm/in		Qty per Drum
K221	0.50	0.020	740	29	1730	68	60
K222/5	0.76	0.030	1370	54	2770	109	5
K223	1.02	0.040	610	24	1370	54	35
K225/5	1.02	0.040	1370	54	2770	109	5

Novus Plastic Polish

- ▲ Novus system provides everything to clean, shine and protect.
- ▲ Novus 1 gently cleans plastic without scratching. Leaves shines that resists fogging, repels dust and eliminates static. Contains no abrasives.
- ▲ Novus 2 removes fine scratches and haziness, helps restore faded and discolored plastics.
- ▲ Novus 3 Removes heavy scratches and abrasion from most acrylic surfaces. Use when damage is too severe for No. 2 polish.
- ▲ Use on Lexan, Plexiglass, clear vinyl, monofilm, polycarbonate, etc.



M171



M172



M173

Part No.	Description	Liquid Measure: ml/floz		Case Qty
M170KIT	Novus#1 & #2 & Polish Mates	59	2	48
M174KIT	Novus#1 & #2 & Polish Mates	236	8	48
M171	Novus#1	59	2	48
M181	Novus#1	236	8	48
M172	Novus#2	59	2	48
M182	Novus#2	236	8	48
M173	Novus#3	59	2	48
M183	Novus#3	236	8	48
M180	Polish Mates Cloth (10 per pack)	-	-	48

Window Material - Sheets

Crystal Clear "20/20"

- ▲ Clear press-polished vinyl sheet produced by Strataglass.
- ▲ Same quality clarity, and perfection as Strataglass.
- ▲ Available only on full drums.



Canvas Designers Inc, FL

Crystal Clear - Clear

Part No.	Gauge Thickness: mm/in		Width: mm/in		Sheet Length: mm/in		Sheets Per Drum
K130/5	0.76	0.030	1370	54	2820	111	5
K140/5	1.02	0.040	1370	54	2820	111	5

Crystal Clear - Dark Smoke Tint

Part No.	Gauge Thickness: mm/in		Width: mm/in		Sheet Length: mm/in		Sheets Per Drum
K140/5DSM	1.02	0.040	1370	54	2820	111	5

Strataglass - Scratch Resistant Glass

- ▲ Leading scratch resistant clear vinyl. **STRATAGLASS**
- ▲ Tested to 12 years accelerated UV.
- ▲ Easy roll-up, the same as regular vinyl.
- ▲ UV Blocking.
- ▲ Use: boat curtains, automotive windows, tent & awning applications.



K315/2 60 gauge window material.



Canvas Designers Inc, FL

Strataglass - Clear

Part No.	Gauge Thickness: mm/in		Width: mm/in		Sheet Length: mm/in		Sheets Per Drum
K305/2	0.76	0.030	1370	54	2820	111	2
K305/5	0.76	0.030	1370	54	2820	111	5
K310/2	1.02	0.040	1370	54	2820	111	2
K310/5	1.02	0.040	1370	54	2820	111	5
K315/2	1.50	0.060	1370	54	2820	111	2

Strataglass - Smoke Tint

Part No.	Gauge Thickness: mm/in		Width: mm/in		Sheet Length: mm/in		Sheets Per Drum
K310/2SM	1.02	0.040	1370	54	2820	111	2
K310/5SM	1.02	0.040	1370	54	2820	111	5

Strataglass - Dark Smoke Tint

Part No.	Gauge Thickness: mm/in		Width: mm/in		Sheet Length: mm/in		Sheets Per Drum
K310/5DSM	1.02	0.040	1370	54	2820	111	5

Strataglass - Care & Maintenance

We recommend using only IMAR Strataglass Protective Polish, IMAR Strataglass Protective Cleaner and mild soap (preferably IMAR Yacht Soap Concentrate) on Strataglass. **(We no longer recommend the use of any other products regardless of the manufacture's claims.)**



- ▲ Use of RAINEX on Strataglass appears to work for a short time but then dulls the surface and presents an 'Orange Peel' effect. **Do not use RAINEX.**

▲ Use of cleaners, polishes, scratch removers, or any other product made from regular, uncoated vinyl will damage Strataglass. **Do not use these products.**

- ▲ **DO NOT HANDLE STRATAGLASS (OR ANY VINYL) WITH SUNSCREEN ON YOU HANDS!** This will permanently cloud the vinyl where handled.

General Maintenance

When New: 3M Adhesive Remover may be used to remove glue left from fabrication. Final clean with IMAR Strataglass Protective Cleaner. We recommend using IMAR Strataglass Protective Polish as the final step in installation to provide a base of protection and a good watershed.

For the Customer: WE RECOMMEND USING IMAR Strataglass Protective Polish ever 2 - 3 months (every 4 - 6 weeks in areas of high fallout). In the interim, use IMAR Strataglass Protective Cleaner frequently.

Note: All new vinyl can easily get impressions on itself. We recommend new enclosures to be left in place to the extent possible. If completely removed must be interleaved with either acid-free paper (available from framing shops) or old sheets (the best choice) to prevent 'pooling' in the glass. Vinyl 'seasons' over time and becomes less impressionable. Roll all curtains down and fasten in place nightly to keep perfect appearance. (Review this information at: www.strataglass.com)



Tips to Fabricators:

- 1 Lay out material that you will be using the night before you plan to work with it. Some marking may have occurred during transportation, this will come out with warmth. Concerning areas may be heated with a heat gun for instant clear up. Hold the heat gun 4 - 6 inches away from the product and work in 12 inch areas at a time. After a few minutes, as the product reaches temperature gradient, it will clear up completely. It has a memory and that memory is the perfect flatness it had coming off the press plates.
- 2 Do not use 'saran wrap' or cling wrap or any vinyl products to protect the sheets. Use craft paper or the tissue the product comes with.
- 3 Do not stack the curtains up without interleaving with paper or something to keep the glass from clinging to itself, but not a vinyl fabric! Should distortion occur, use a heat gun to heat up the surface and return the product to its 'memory'.
- 4 If installing in cold weather, it is strongly recommended that you heat up the enclosure as you are installing and stretch the product into position. Product installed tightly in the cold will not necessarily be so in warm weather.



Window Material - Rolls

Roll-A-Glass Window Material

- ▲ Clear vinyl.
- ▲ Best quality roll goods available. Can use RF to heat seal seams against water penetration.
- ▲ K230/232 Glass-clear with paper interleaving for protection.
- ▲ K333/334/335 - Best quality, glass-clear without interleaving.



Part No.	Gauge Thickness: mm/in		Roll Width: mm/in		Roll Length: m/yd	
K230	0.40	0.016	1370	54	23	25
K232	0.50	0.020	1370	54	18	20
K333	0.76	0.030	1370	54	17.4	20
K334	1.02	0.040	1370	54	13.7	15

1000 hour UV Roll-A-Glass

- ▲ Clear vinyl.
- ▲ Sparkling clarity, extended UV life window material.
- ▲ 0°F cold crack.
- ▲ FR302 Fire resistant.

Passes 1000 hour UV weatherometer

Part No.	Gauge Thickness: mm/in		Roll Width: mm/in		Roll Length: m/yd	
K631	0.50	0.020	1370	54	27	30

Monofilm

- ▲ See-through polyester film for a light weight performance material for boardsails and telltale windows.
- ▲ Use J090 series seaming tapes (see page 118) for sewing panels together.

Part No.	Gauge Thickness: mm/in/microns			Roll Width: mm/in	Roll Length: m/yd		Weight: gm/oz	
E078	0.12	0.005	120	1370	54	46	50	111 3.9
E088	0.18	0.007	180	1370	54	46	50	156 5.5
E080	0.25	0.010	250	1370	54	46	50	224 7.9

CLEAR-VU High Optical Clarity Roll Glass

Clear-VU is a top quality extruded vinyl product that offers optical clarity approaching the best press polished sheet vinyl, while still retaining the benefits of roll glass convenience.

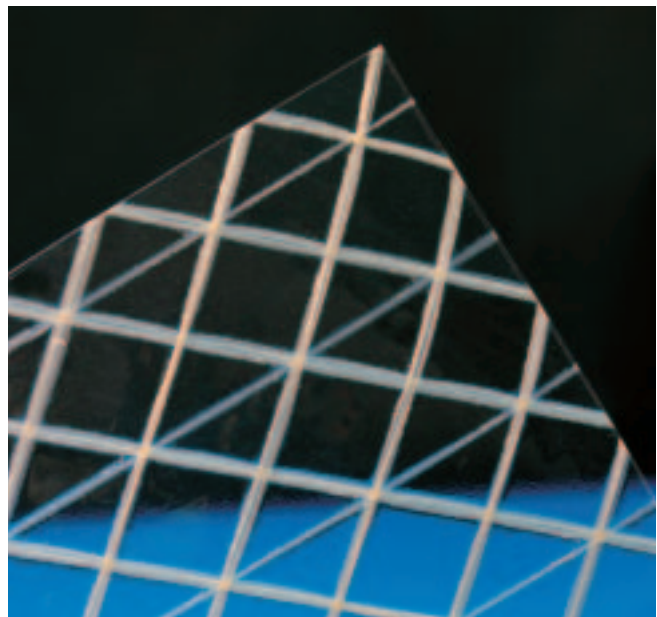
- ▲ K432 is a soft hand similar to roll-a-glass in stiffness.
- ▲ K434 has a firm hand as pressed polished sheets.



Part No.	Gauge Thickness: mm/in		Roll Width: mm/in		Roll Length: m/yd	
K432	0.76	0.030	1370	54	17.8	19.5
K434	1.02	0.040	1370	54	14.0	15.3

DIAX-Clear

- ▲ Gold polyester DIAX laminated with 4 mil optically clear film.
- ▲ Low stretch, high tear strength.
- ▲ Ideal for laminate and woven race sail windows.



Part No.	Thickness: mm/in		Roll Width: mm/in	
F6000E00M	0.15	0.006	1370	54

210 Cleaner & Polish

- ▲ Easy removal of all kinds of marks.
- ▲ Provides anti-static/anti-fog coating.
- ▲ Can be used on polycarbonate, acrylic, fiberglass, formica, PVC and others.



Part No.	Description	Liquid Measure: ml/floz	Case Qty	
M210/7	210 Cleaner	207	7	12
M210/14	210 Cleaner	414	14	12

210 Plus Scratch Remover

- ▲ For more serious cleaning.
- ▲ Repairs minor blemishes and surface scratches.



Part No.	Description	Liquid Measure: ml/floz	Case Qty	
M211/7	210 Scratch Remover	222	7.5	12

Clear Vinyl Care & Cleaning

The smooth, highly polished surfaces of Flexible Plastic Windows, clear vinyl, are sensitive and can be easily scratched and marred if mishandled during unpacking, handling and cleaning.



- ▲ Never pull individual sheets from a drum as this will cause scratches across the narrow width of the sheet.
- ▲ Do not put any weight onto "Roll A Glass". It is better to store rolls standing up.
- ▲ Never use harsh brushes or abrasives when cleaning plastic windows.
- ▲ The effect of sunlight combined with environmental pollution will actually alter the chemical structure of your plastic window, resulting in permanent discoloration and brittleness.
- ▲ To maintain the clarity and extend the life of your plastic window, it is essential that you wash dirt and salt water off the surfaces and treat the window on a regular basis with 303 UV Protection or 210 products.

Do Not:

- ▲ Use harsh detergents.
- ▲ Use Products containing silicones or alcohol. This will age vinyls.
- ▲ Rub the plastic window when dry. This will scratch the window. Always flood the window with water before gently wiping it with a damp, soft cotton cloth.
- ▲ Stow the convertible top when it is dirty because it will scratch or mildew.



IMAR Yacht Soap

- ▲ Formulated to create highly polished appearance, non-streaking, non-spotting.
- ▲ Rinses clear and decreases drying time.
- ▲ No harsh alkalies, acids or abrasives.



M224/16

M224/128

Part No.	Description	Liquid Measure: ml/floz	Case Qty	
M224/16	Bottle	473	16	12
M224/128	Gallon Refill	3785	128	4

IMAR Strataglass Protective Cleaner

- ▲ Uniquely formulated to clean and shine and protect strataglass & crystal clear 20/20.
- ▲ Special UV inhibitors extend the useful life of Strataglass by minimizing the deteriorating effects of sunlight.
- ▲ Safe for use daily and recommended to use often.



Part No.	Description	Liquid Measure: ml/floz	Case Qty	
M221/4	Pump Spray	118	4	24
M221/16	Pump Spray	473	16	12

IMAR Strataglass Protective Polish

- ▲ Formulated to safely clean, polish and protect Strataglass and Crystal Clear 20/20.
- ▲ Creates a nearly invincible protective barrier against the damaging effects of marine environment pollutants.
- ▲ Recommended for use every 2 - 3 months.
- ▲ Frequent use of Imar Strataglass Protective Cleaner between polishing will increase protection.

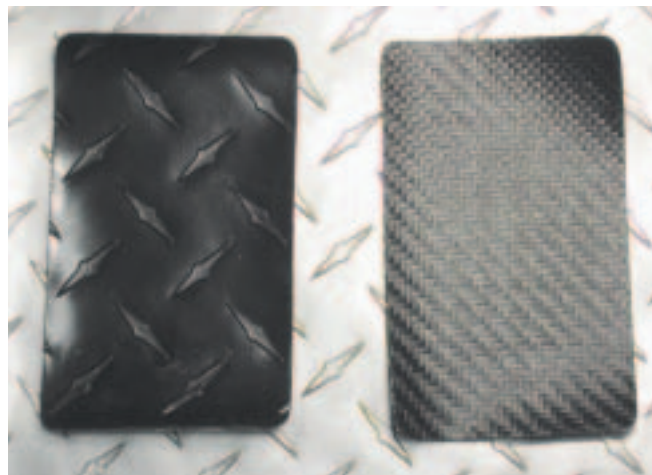


Part No.	Description	Liquid Measure: ml/floz	Case Qty	
M222/4	Bottle	118	4	24
M222/16	Bottle	473	16	12

Vinyl Fabrics

Diamond Tex & Carbon Tex

- ▲ Clear top coated.
- ▲ -22°F cold crack.
- ▲ Super wide width, a waterproof embossed vinyl with a 100% polyester backing.
- ▲ High tear & tensile strength.
- ▲ Weather resistant.
- ▲ Abrasion resistant.
- ▲ Dimensional stable.
- ▲ Excellent cleanability.
- ▲ Uses: Tonneau covers, sport utility vehicles, covers.
- ▲ Weight: 610gsm/18oz/sq yd.



Part No.	Color	Width: mm/in		Roll Length: m/yd	
FH300DTBK	Black	1980	78	45	50
FH300DTSR	Silver	1980	78	45	50
FH300CTBK	Black	1980	78	45	50

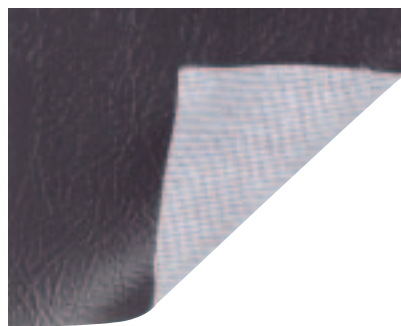


Do Not Use:

- ▲ Formula 409 (states not for use on vinyl).
- ▲ Murphy's oil soap.
- ▲ Simple green.
- ▲ Armor all.
- ▲ Bleach/baking soda.
- ▲ Kerosene, gasoline, acetone.

Tonneau Vinyl Fabric

- ▲ Super wide width, a waterproof embossed vinyl with a 100% polyester backing.
- ▲ High tear & tensile strength.
- ▲ Weather resistant.
- ▲ Abrasion resistant.
- ▲ Dimensional stable.
- ▲ Excellent cleanability.
- ▲ Uses: Tonneau covers, sport utility vehicles, covers.
- ▲ Weight: 610gsm/18oz/sq yd.



Part No.	Color	Width: mm/in		Roll Length: m/yd	
FH300BK	Black	1980	78	45	50

Silver Energy Shield Vinyl

- ▲ Silver Energy Shield Vinyl is a laminated vinyl with one side having a metallic silver colored film with taffeta embossing and a standard white vinyl flip side.
- ▲ Uses: Manufacture pizza delivery bags, industrial curtains, thermal barriers, spa cover liners, airplane windshield covers and soft-sided coolers.
- ▲ Weight: 406gsm/12oz/sq yd.



Part No.	Color	Width: mm/in		Av Roll Length: m/yd	
FH310SR	Metallic Silver/White	1370	54	91	100

Vinyl Care and Cleaning

- ▲ For general purpose cleaning use Fantastik or warm water with a mild dish soap. Gently scrub with a small soft bristle brush.
- ▲ For dirt build-up, soak for approximately 10 minutes, then gently scrub with a soft bristle brush. For specific stain removal, refer to your cleaning and care card.
- ▲ Do not use any silicone based protectants. They will extract the plasticizers, leaving the vinyl hard and brittle, and eventually cracking will occur.

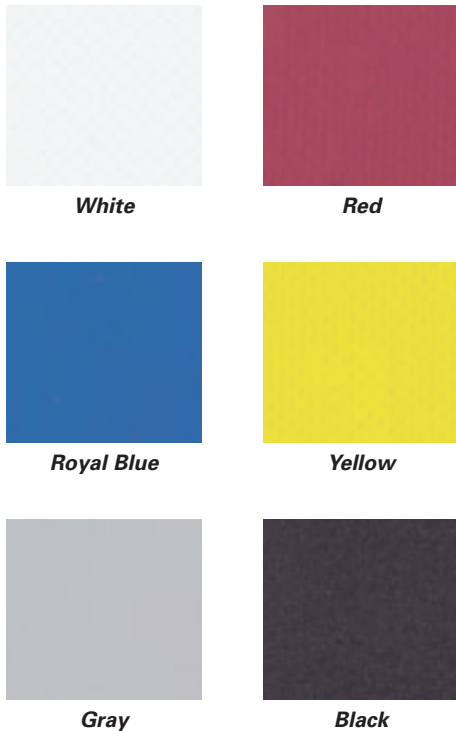
Do Use:

- ▲ Dish soap (dawn, Ivory).
- ▲ Fantastik.
- ▲ 303 Protectant - see page 149.
- ▲ Read labels on all cleaners.



Vinyl Coated Fabrics

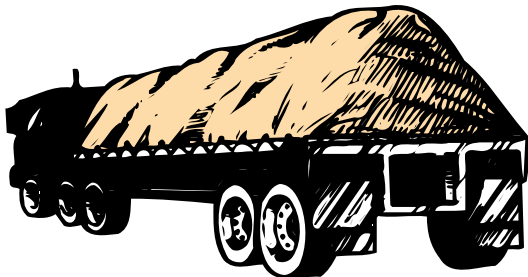
Color Availability



Shelter-Rite® 18oz

The most popular weight vinyl coated polyester product in the trucking industry. It features excellent tear, good abrasion and overall durability.

- ▲ Coated for excellent abrasion, puncture and tear resistance.
- ▲ Water resistant. Non-wicking.
- ▲ Cold crack -60°F. Not affected by extreme temperature changes.
- ▲ Resistant to fungicidal growth.
- ▲ Will not become stiff due to volatility loss.
- ▲ Uses: Truck covers, tailgate curtains, marine covers, gym mats, oil booms dock seals, heavy duty bags and covers, industrial tarps.
- ▲ Weight: 610gsm/18oz/sq yd.



Part No.	Color	Width: mm/in	Av Roll Length: m/yd
FH418WT	White	1550 61	101 110
FH418RD	Red	1550 61	101 110
FH418BU	Royal Blue	1550 61	101 110
FH418YE	Yellow	1550 61	101 110
FH418GY	Gray	1550 61	101 110
FH418BK	Black	1550 61	101 110

Shelter-Rite - 10 oz Vinyl

A light weight vinyl coated nylon product offering features similar to 18oz with a little less weight.

- ▲ Coated for excellent abrasion, puncture and tear resistance.
- ▲ Water resistant. Non-wicking.
- ▲ Cold crack - 60°F. Not affected by extreme temperature changes.
- ▲ Resistant to fungicidal growth.
- ▲ Uses: Cold air inflatables, banners.
- ▲ Weight: 340gsm/10oz/sq yd.
- ▲ Width: 1590mm/61 inches.
- ▲ Length: 101m/110 yards.

Part No.	Color	Width: mm/in	Av. Roll Length: m/yd	PMS
FH410WT	White	1590 61	101 110	
FH410BU	Royal Blue	1590 61	101 110	293
FH410RD	Red	1590 61	101 110	
FH410BK	Black	1590 61	101 110	

Shelter-Rite® 14oz

A medium weight vinyl coated nylon product offering features similar to 18 ounce with a little less weight.

- ▲ Coated for excellent abrasion, puncture and tear resistance.
- ▲ Water resistant. Non-wicking.
- ▲ Cold crack -60°F. Not affected by extreme temperature changes.
- ▲ Resistant to fungicidal growth.
- ▲ Will not become stiff due to volatility loss.
- ▲ Uses: Cart covers, curtains, enclosures, coverings, mats.
- ▲ Weight: 475gsm/14oz/sq yd.

Part No.	Color	Width: mm/in	Av Roll Length: m/yd
FH414WT	White	1590 61	101 110
FH414BU	Royal Blue	1590 61	101 110
FH414BK	Black	1590 61	101 110

Bainflata 210 - 7.5 oz Vinyl

210 denier plain weave nylon with pigmented PVC coating on both sides.

- ▲ Features: Durable, UV resistant, waterproof, good tear and tensile strength for weight.
- ▲ Uses: Cold air inflatable advertising structures, canopies, banners, large format inkjet prints.
- ▲ Weight: 255gsm/7.5oz/sq yd.
- ▲ Length: 91m/100 yards.



For Color Chart See Page 222

Part No.	Color	Width: mm/in	PMS
FH210WT	White	1520 60	
FH210RB	Royal Blue	1520 60	293
FH210NV	Navy Blue	1520 60	228
FH210YE	Yellow	1520 60	116
FH210GR	Green	1520 60	336
FH210RD	Red	1520 60	187
FH210OR	Orange	1520 60	172
FH210PK	Pink	1520 60	212
FH210PU	Purple	1520 60	Violet C
FH210FLS	Flesh	1520 60	148
FH210BR	Brown	1520 60	4625
FH210GY	Gray	1520 60	007
FH210BK	Black	1520 60	
FH210SR	Silver	1520 60	424
FH210BGR	Bright Green	1520 60	355
FH210CGY	Charcoal Gray	1520 60	423
FH210LBU	Light Blue	1520 60	298

Note: Color representation from 4-color process is for reference purposes only. Please inquire for color sample of actual fabric.

Leather, Adhesive & Cleaner

3M Brand Super 77 Spray Adhesive

- ▲ Very high bond strength.
- ▲ An extremely versatile spray adhesive that permits either a temporary or permanent bond with a new "low mist" formula.
- ▲ Fast, aggressive tack for bonding most light weight materials.
- ▲ Best on two surfaces.
- ▲ Bonding range: 15 minutes one surface/30 minutes two surfaces.
- ▲ Coverage: 20.4m²/220 square feet.
- ▲ Clear adhesive with fine mist.
- ▲ No CFC's.



Special Shipping

Part No.	Description	Liquid Measure: ml/floz		Case Qty
J959	Aerosol	710	24	12

Sailmakers Leather

- ▲ Fuzzy leather surface both sides - E160.
- ▲ Approximate weight: 4oz/sq ft.
- ▲ Smooth surface one side, fuzzy bottom side - E162 - E163.



Part No.	Style	Size: m/ft	
E160	Gray Piece	0.3 x 0.6	1 x 2
E162	Heavy Gray Chrome - Full Hide	About 1.9m ²	About 20sq ft
E163	Special Tan - Full Hide	About 1.9m ²	About 20sq ft

Mildew Remover

- ▲ Removes mold, mildew, tough dirt and some stains.
- ▲ Use on fabrics, vinyl, plastic, fiberglass, wood and Sunbrella.
- ▲ Color and fabric safe.
- ▲ Gentle to skin. No harmful vapours.
- ▲ Just add water to the bio degradable non toxic, non chlorine powder.
- ▲ 1 x 340g/12 ounce jar makes 11 litres/3 gallons.



Part No.	Description	Weight: gm/oz	
M212	Mildew Remover	340	12

Vinyl Adhesive

- ▲ HH-66 vinyl cement is easy to apply, fast drying and a very versatile adhesive for vinyl, plastic, metal, wood and leather.
- ▲ Permanently bonds all vinyls.
- ▲ Waterproof - repairs leaks in fabrics and may be used as a seam sealer.
- ▲ Dries in minutes and remains flexible.



Special Shipping



Part No.	Description	Liquid Measure: ml/floz		Case Qty
J969	Can with brush top	236	8	12
J970	Can with brush top	472	16	-
J971	Can with brush top	946	32	-

3M Brand Super 74 Foam Adhesive

- ▲ Specially formulated spray adhesive for binding flexible urethane or latex foam together or to most other materials like wood, metal and plastics.
- ▲ Fast tack.
- ▲ Non-misting, precise spray control.
- ▲ Variable width spray provides one to three inches wide spray pattern.
- ▲ Excellent for cushion & upholstery work.
- ▲ Extra coverage: 24.5m²/264 square feet.



Special Shipping

Part No.	Description	Liquid Measure: ml/floz		Case Qty
J939	Aerosol	710	24	12

3M General Trim Adhesive

- ▲ High strength clear adhesive.
- ▲ Non-misting - lace like spray.
- ▲ Adjustable nozzle (1 - 4 inch spray width).
- ▲ Non staining, low soak-in on foams and fabrics.
- ▲ Good heat and weather resistance.
- ▲ Bonding range: 1 to 15 minutes.
- ▲ Use on carpeting, foams, fabrics, plastics and rubber.



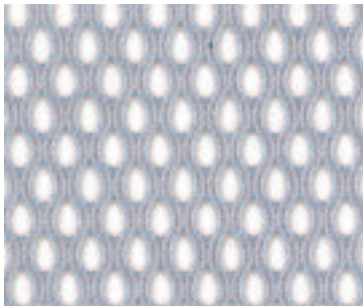
Special Shipping

Part No.	Description	Liquid Measure: ml/floz		Case Qty
J979	Aerosol	710	24	12



Light Weight Polyester Knit Mesh

▲ Uses: Breathable panels for bags/safety nets.



Part No.	Color	Weight: gsm/oz/sq yd		Width: mm/in		Roll Length: m/yd	
FH062WT	White	109	3.2	1575	62	160	175
FH062BK	Black	109	3.2	1575	62	160	175

Heavy Weight Polyester Knit Mesh

▲ Uses: Breathable panels for bags/safety nets.



Part No.	Color	Weight: gsm/oz/sq yd		Width: mm/in		Roll Length: m/yd	
FH063WT	White	339	10	1600	63	46	50

"No See-Um" Polyester Netting

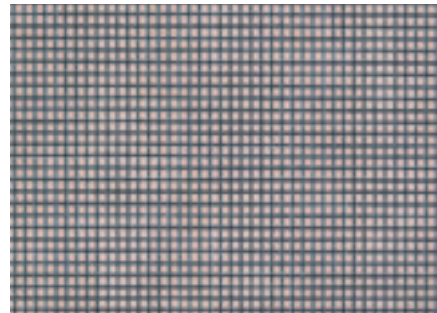
- ▲ Flame retardant: CPAI84.
- ▲ Uses: For insect screens.
- ▲ Weight: 31gsm/0.9oz/sq yd.



Part No.	Color	Width: mm/in		Roll Length: m/yd	
FH172GY	Slate Gray	1600	63	320	350

Fiberglass Screen

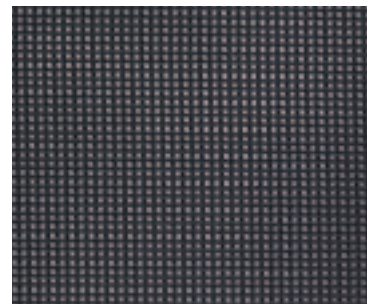
- ▲ Long wear fiberglass screen with excellent flexing and superior ultraviolet resistance.
- ▲ Fire retardant (CPAI-84).
- ▲ 18 x 14 construction.
- ▲ Uses: Insect and bug screens. Boat cover vents.
- ▲ Weight: 85gsm/2.5oz/sq yd.



Part No.	Color	Width: mm/in		Roll Length: m/yd	
FH372CG	Slate Gray	1830	72	91	100

Leno Mesh

- ▲ Firm nylon mesh with very low stretch in all directions.
- ▲ Uses: Trampolines, breathable panels for bags, backpacks.
- ▲ Weight: 329gsm/9.7oz/sq yd.



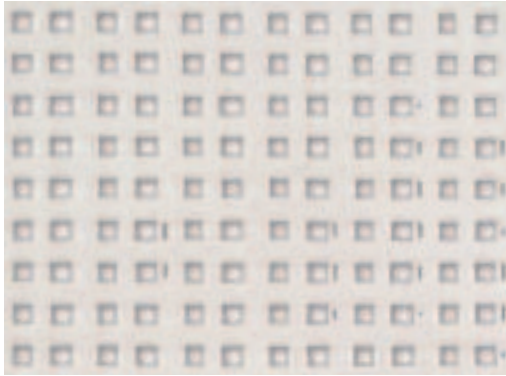
Part No.	Color	Width: mm/in		Roll Length: m/yd	
FH058BK	Charcoal	1500	55	91	100

Trampoline Mesh

Heavy Duty Tramp

Heavy duty trampoline is a very strong woven polyester mesh that has a thick vinyl coating with UV and mildew inhibitors. Designed for industrial applications as well as trampolines on large catamarans.

▲ Weight: 848gsm/25oz/sq yd.



Part No.	Color	Roll Width: mm/in	Roll Length: m/yd
FH590WT	White	1800 71	50 54
FH590BK	Black	1800 71	50 54

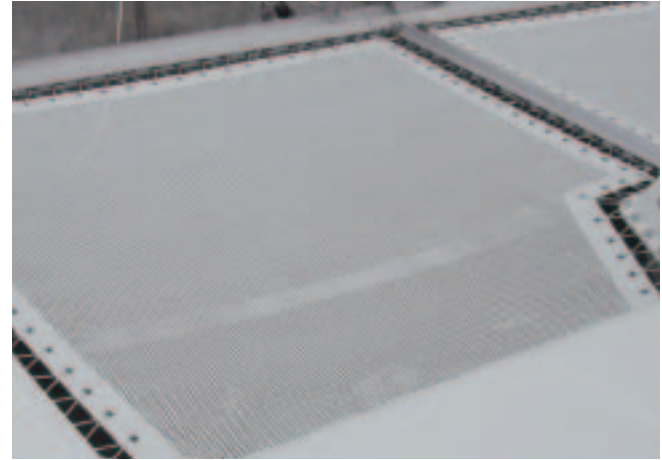
Extra Heavy Duty SuperTramp

SuperTramp, with mildew inhibitors, is designed for outdoor tensile structures where strength, durability and resistance to the elements is required. SuperTramp can be used for large catamaran applications, for greater strength and durability than standard trampoline products. It has also been used for large fixed outdoor shades, with its FR standard M2 rating (equal to NFPA 701).

▲ Weight: 1017gsm/30oz/sq yd.



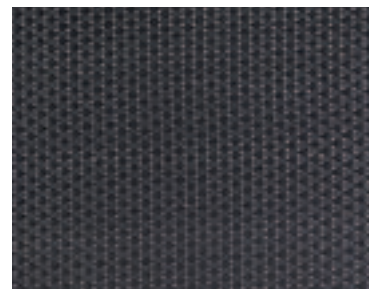
Part No.	Color	Roll Width: mm/in	Roll Length: m/yd
FH592WT	White	1800 71	50 54



Trampoline Cloth

▲ UV inhibited monofilament polypropylene basketweave.

▲ Weight of 270gsm/8oz/sq ft.



Part No.	Color	Width: mm/in	Roll Length: m/yd
FH374BK	Black	1880 74	45.7 50

Page Navigation

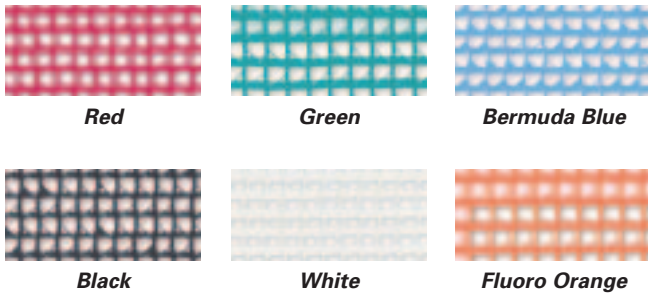
Thread - See Pages 120 - 125
 Grommets - See Pages 99 - 101
 Vinyl Fabrics - See Pages 176 - 177



Vinyl Mesh Fabrics

Sleeveknit Vinyl Mesh

- ▲ 9 x 9 knitted polyester mesh with vinyl coating.
- ▲ Uses: Windscreens, banners, outdoor furniture, shade cloth.
- ▲ Weight: 220gsm/6.5oz/sq yd.



Part No.	Color	Roll Width: mm/in	Roll Length: m/yd
FH160RD	Red	1524 60	91.4 100
FH160GR	Green	1524 60	91.4 100
FH160BU	Bermuda Blue	1524 60	91.4 100
FH160BK	Black	1524 60	91.4 100
FH160WT	White	1524 60	91.4 100
FH160FO	Fluoro Orange	1524 60	91.4 100

Multi-Purpose Vinyl Tight Mesh

- ▲ 9 x 12 knitted polyester mesh with vinyl coating.
- ▲ White mesh is fire retardant and meets California Fire Marshall 117, section E specifications.
- ▲ Black mesh is not fire retardant.
- ▲ Uses: Wind and sun screens, banners, breathable cushion bottoms.
- ▲ Weight: 271gsm/8oz/sq yd.



Part No.	Color	Roll Width: mm/in	Roll Length: m/yd
FH162WFR	White	1520 62	91 100
FH162BK	Black	1905 75	91 100

18 x 18 Vinyl Mesh

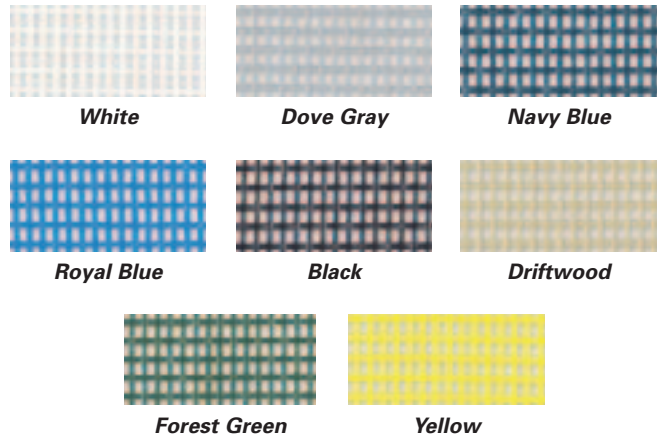
- ▲ 18 x 18 knitted polyester mesh with vinyl coating.
- ▲ Fire retardant, meets California Fire Marshall 117, section E specifications.
- ▲ Uses: Wind and sun screens, breathable cushion bottoms.
- ▲ Weight: 288gsm/8.5oz/sq yd.



Part No.	Color	Roll Width: mm/in	Roll Length: m/yd
FH218WT	White	2030 80	91 100

TEXTILENE® - Mesh

- ▲ PVC vinyl encapsulated polyester mesh material.
- ▲ Very strong with excellent tear and abrasion resistance.
- ▲ Fade resistant.
- ▲ 45% to 65% shade factor depending on color.
- ▲ Uses: Wind and sun screens, breathable cushion bottoms, banners.
- ▲ Weight: 350gsm/10.3oz/sq yd.
- ▲ Minimum for cut length orders 9m/10 yards.

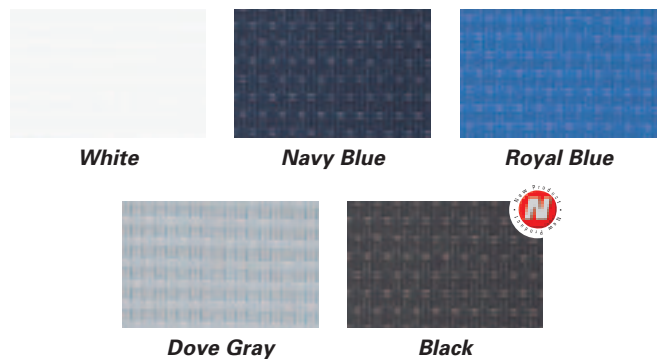


Part No.	Color	Roll Width: mm/in	Roll Length: m/yd
FH354WT	White	1370 54	59 65
FH354GY	Dove Gray	1370 54	59 65
FH354NV	Navy Blue	1370 54	59 65
FH354RB	Royal Blue	1370 54	59 65
FH354BK	Black	1370 54	59 65
FH354AL	Driftwood	1370 54	59 65
FH354GR	Forest Green	1370 54	59 65
FH354YE	Yellow	1370 54	59 65

TEXTILENE® is a Registered Trademark of Twitchell Corporation.

Sunsure - Mesh

- ▲ 42 x 12 woven PVC vinyl encapsulated polyester mesh material, 95% shade factor.
- ▲ Features: Tighter mesh than standard textilene.
- ▲ Fire retardant, meets California Fire Marshall 117, section E specifications.
- ▲ Uses: Wind and sun screens, banners.
- ▲ Weight: 550gsm/16.3oz/sq yd.



Part No.	Color	Roll Width: mm/in	Roll Length: m/yd
FH359WT	White	1370 54	59 65
FH359NV	Navy Blue	1370 54	59 65
FH359RB	Royal Blue	1370 54	59 65
FH359GY	Dove Gray	1370 54	59 65
FH359BK	Black	1370 54	59 65

Note: Color representation from 4-color process is for reference purposes only. Please inquire for color sample of actual fabric.

Nylon Fabrics

"1.9 Ounce" 70 Denier Ripstop Nylon

- ▲ 70 denier woven ripstop nylon with a 25gsm / ¾ ounce urethane coating.
- ▲ Light weight and strong.
- ▲ Very good tear strength.
- ▲ Uses: Windssocks, flags and banners, cold air inflatable advertising structures, dancing tubes.
- ▲ Average roll length: 101m/110 yards.
- ▲ Width: 152cm/60 inch.
- ▲ Weight: 88gsm/2.6oz/sq yd.
- ▲ Other colors available.




Part No.	Color	PMS
FH019WT	White	
FH019RD	Red	187
FH019NV	Navy Blue	296
FH019RB	Royal Blue	2728
FH019GR	Kelly Green	349
FH019YE	Yellow	101
FH019SR	Silver	429
FH019BK	Black	

1.9 Ounce 70 Denier Ripstop Nylon - Fire Retardant

- ▲ 70 denier woven ripstop nylon with a 25gsm / ¾ ounce urethane coating.
- ▲ Light weight and strong.
- ▲ Very good tear strength.
- ▲ Fire retardant, meets USA CPAI 84 and ISO 6940.
- ▲ Uses: Windssocks, flags and banners, cold air inflatable advertising structures, dancing tubes, camping and backpacks.
- ▲ Weight: 88gsm/2.6oz/sq yd.

Part No.	Color	Width: mm/in	Av. Roll Length: m/yd
FH019WTFR	White	1500 59/60	101 110
FH019RDFR	Red	1500 59/60	101 110
FH019RBF	Royal Blue	1500 59/60	101 110
FH019YEFR	Yellow	1500 59/60	101 110
FH019BKFR	Black	1500 59/60	101 110

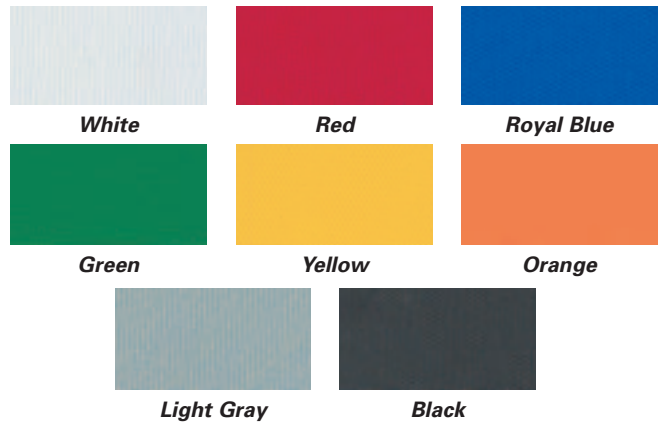


Dyed nylon fabrics may not be totally colorfast, especially when damp or when used in humid conditions, or if in contact with materials having free solvents, even in trace quantities. No guarantee can therefore be given related to color fastness. Customers should satisfy themselves about the suitability of the selected fabric for the application in question.

Baintex 70

70 Denier woven nylon with embossed pigmented PVC coating one-sided.

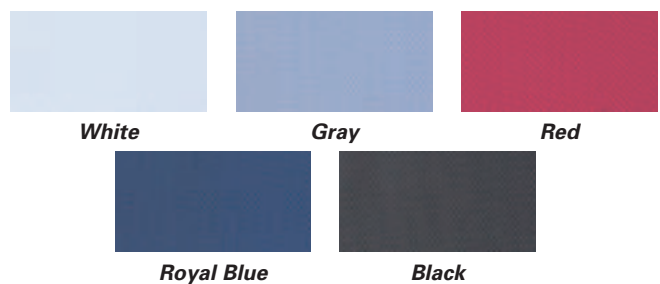
- ▲ Accepts pressure sensitive graphics.
- ▲ Can be silk screen printed.
- ▲ Textured yarn for soft hand.
- ▲ Fire retardant, meets California fire code 117, section E.
- ▲ Uses: Golf bags, hot and cold insulated bags, banners, signs, indoor awnings and covers.
- ▲ Weight: 373gsm/11oz/sq yd.




Part No.	Color	Roll Width: mm/in	Roll Length: m/yd
FH070WT	White	1470 58	46 50
FH070RD	Red	1470 58	46 50
FH070RB	Royal Blue	1470 58	46 50
FH070GRN	Green	1470 58	46 50
FH070YE	Yellow	1470 58	46 50
FH070OR	Orange	1470 58	46 50
FH070GY	Light Gray	1470 58	46 50
FH070BK	Black	1470 58	46 50

210 Denier Oxford Nylon

- ▲ Durable, water repellent urethane coated. UV inhibited 210 denier nylon.
- ▲ Uses: Sail bags, soft-sided luggage, backpacks, garment bags, stuff bags, flags, banners, apparel.
- ▲ Weight: 105gsm/3.1oz/sq yd.



Part No.	Color	Width: mm/in	Av Roll Length: m/yd
F5600D00W	White	1520 60	101 110
F5600D08W	Gray	1520 60	101 110
F5600D10W	Red	1520 60	101 110
F5600D79W	Royal Blue	1520 60	101 110
F5600D60W	Black	1520 60	101 110



Nylon High Intensity colors are likely to fade quickly. Nylon may bleed when wet!

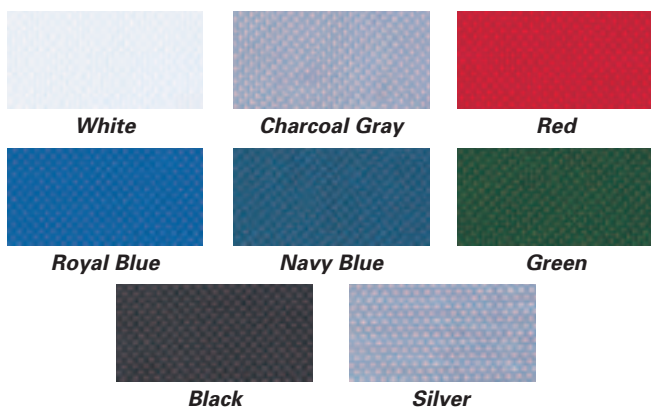
Note: Color representation from 4-color process is for reference purposes only. Please inquire for color sample of actual fabric.

Marine Cover Fabrics

Nylon & Polyester Bag Materials

Baintex 600

- ▲ 600 denier tightly woven polyester with embossed PVC coating on one side.
- ▲ Super durable with high abrasion resistance.
- ▲ Textured yarn for soft hand.
- ▲ High tear and tensile strength.
- ▲ Excellent cold crack characteristics.
- ▲ Waterproof.
- ▲ Uses: Sport bags, soft-sided luggage, garment bags, base for cold air inflatable.
- ▲ Weight: 407gsm/12oz/sq yd.



Part No.	Color	Width: mm/in	Av Roll Length: m/yd	
FH600WT	White	1470 58	46	50
FH600CG	Charcoal Gray	1470 58	46	50
FH600RD	Red	1470 58	46	50
FH600RB	Royal Blue	1470 58	46	50
FH600NV	Navy Blue	1470 58	46	50
FH600GR	Green	1470 58	46	50
FH600BK	Black	1470 58	46	50
FH600SR	Silver	1470 58	46	50

420 Denier Nylon Pack Cloth

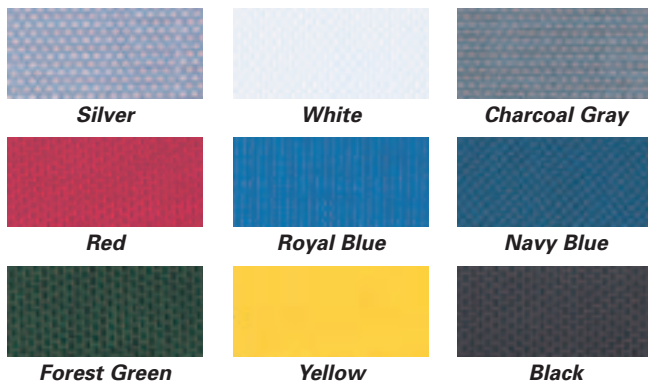
- ▲ 420 denier x 420 denier nylon with urethane coating.
- ▲ Uses: Sail bags, soft-sided luggage, backpacks, garment bags, stuff bags.
- ▲ Weight: 193gsm/5.7oz/sq yd.



Part No.	Color	Width: mm/in	Av Roll Length: m/yd	
F5240D00W	White	1520 60	101	110
F5240D08W	Gray	1520 60	101	110
F5240D10W	Red	1520 60	101	110
F5240D22W	Navy Blue	1520 60	101	110
F5240D35W	Yellow	1520 60	101	110
F5240D60W	Black	1520 60	101	110
F5240D79W	Royal Blue	1520 60	101	110

Cordura 1000

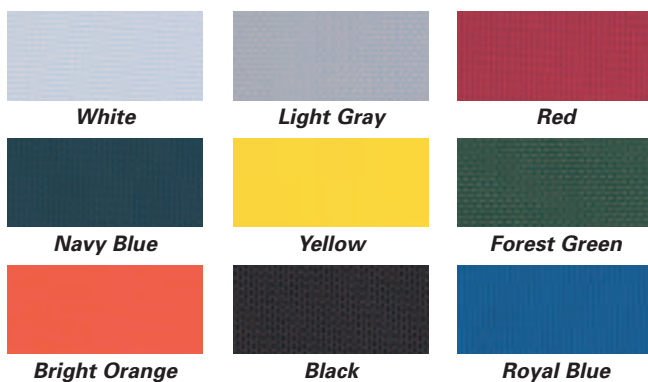
- ▲ 1000 denier super tough woven DuPont high tenacity nylon with a 33gsm/1 ounce urethane coating for durability and water repellency.
- ▲ Excellent resistance to abrasion, fading, rot and mildew.
- ▲ Water repellent and quick drying.
- ▲ High tensile strength and tear resistance.
- ▲ Uses: Heavy duty bags, soft-sided luggage, apparel, horse blankets, backpacks, recreational equipment.
- ▲ Made in USA.
- ▲ Weight: 458gsm/13.5oz/sq yd.



Part No.	Color	Width: mm/in		Av Roll Length: m/yd	
F5300D08W	Silver	1520	60	46	50
F5300D00W	White	1520	60	46	50
F5300D58W	Charcoal Gray	1520	60	46	50
F5300D10W	Red	1520	60	46	50
F5300D79W	Royal Blue	1520	60	46	50
F5300D22W	Navy Blue	1520	60	46	50
F5300D46W	Forest Green	1520	60	46	50
F5300D35W	Yellow	1520	60	46	50
F5300D60W	Black	1520	60	46	50

400 Denier Nylon Pack Cloth

- ▲ Durable water repellent 400 denier x 400 denier nylon with 25gsm/¾ ounce urethane coating.
- ▲ Uses: Sail bags, soft-sided luggage, backpacks, garment bags, stuff bags.
- ▲ Made in USA.
- ▲ Weight: 210gsm/6.2oz/sq yd.



Part No.	Color	Width: mm/in		Av Roll Length: m/yd	
F5230D00W	White	1520	60	101	110
F5230D08W	Light Gray	1520	60	101	110
F5230D10W	Red	1520	60	101	110
F5230D22W	Navy Blue	1520	60	101	110
F5230D35W	Yellow	1520	60	101	110
F5230D46W	Forest Green	1520	60	101	110
F5230D55W	Bright Orange	1520	60	101	110
F5230D60W	Black	1520	60	101	110
F5230D79W	Royal Blue	1520	60	101	110

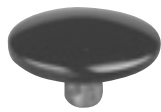
Note: Color representation from 4-color process is for reference purposes only. Please inquire for color sample of actual fabric.

DOT® Fasteners

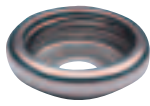
Button Snap Fastener

When superior snap action and holding strength is needed, the durable DOT fastener is the one to use, it is self-piercing, so no pre-punching is required, the durable DOT fastener's heavy-duty construction assures a firm grip that will remain secure through years of use.

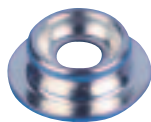
- ▲ All manufactured in nickel plated brass.
- ▲ May be used with Quick-Fit locating tools.
- ▲ Available only in full packs of 100.



G140



G142, G155



G143



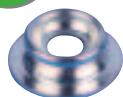
G145

Part No.	Description	Mfr #
G140	Nickel Button with 5mm/ 3/8" Barrel	93-X2-10128
G140BU	Pacific Blue Button with 5mm/ 3/8" Barrel	93-XV-10150
G140BK	Black Button with 5mm/ 3/8" Barrel	93-XV-10150
G140WT	White Button with 5mm/ 3/8" Barrel	93-XV-10150
G140NV	Navy Button with 5mm/ 3/8" Barrel	93-XV-10150
G141	Nickel Button with 6.5mm/ 1/4" Barrel	93-X2-10127
G141L	Nickel Button with 10mm/ 3/8" Barrel	93-X2-10127
G142	Regular Action Socket	93-XB-10224
G145	Eyelet with 6.5mm/ 1/4" Barrel	93-BS-10412
G146	Eyelet with 8mm/ 5/16" Barrel	93-BS-10413
G147	Eyelet with 10mm/ 3/8" Barrel	93-BS-10414
G155	Stiff Action Socket	93-XX-10224

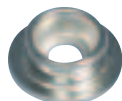
Button Snap Fastener Specialty Studs

- ▲ All manufactured in nickel plated brass/stainless steel.
- ▲ Available only in full packs of 100.

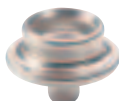
Special Pricing on 10 pack



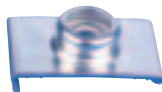
G143



G144



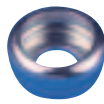
G148



G156/G157



G174



G182

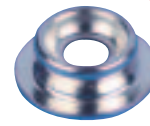
Part No.	Description	Mfr #
G143	Stud for use with Eyelet	93-BS-10370
G144	Deep Stud	93-BS-10379
G174	Rivet Stud 3.2mm/ 1/8"	93-10314
G148	Stud, Reversible Type (use with G142)	93-XB-10342
G156	20mm/ 3/4" Windshield Clip	93-10388
G157	28.6mm/ 1 1/8" Windshield Clip	93-10391
G182	Flangeless Stud	93-10373

Stainless Steel Button Snap Fastener

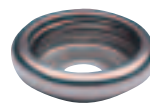
- ▲ The new all stainless steel DOT Buttons are stronger than the standard brass/nickel buttons, and also resist corrosion.
- ▲ The stainless steel barrels allows it to self-pierce through a greater variety and thickness of material without the need for pre-punching.
- ▲ The brass/nickel plated cap with stainless steel style self-pierces through nylons, Dacrons and webbings.
- ▲ G140BS - this button offers greater strength, higher quality than standard with low additional cost.
- ▲ Available only in full packs of 100.



G140SS/G140BS



G143SS



G142SS/G149SS



G145SS

Part No.	Description	Mfr #
G140SS	S.S. Button with 4.8mm/ 3/16" S.S. Barrel	93-XN-10128
G140BS	Brass/Nickel Button with 4.8mm/ 3/16" S.S. Barrel	93-XB-10128
G141SS	S.S. Button with 6.4mm/ 1/4" S.S. Barrel	93-XN-10128
G142SS	S.S. Regular Action Socket	93-XN-10224
G143SS	S.S. Stud for use with Eyelet	93-NS-10370
G145SS	S.S. Eyelet with 6.5mm/ 1/4" Barrel	93-NS-10412
G149SS	Easy Action S.S. Socket	93-XN-10225

Button Snap Fastener Screw Studs

- ▲ Manufactured in nickel plated brass.
- ▲ Available only in full packs of 100.
- ▲ Screws in brass or stainless steel.



G151
G151SS



G152OS



G153
G154



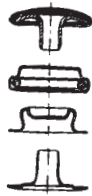
G171
G175



G171FW

Part No.	Description	Mfr #
G152OS	Stud with Oversize S.S. Screw (No.10 Deep Phillips x 15.9mm/ 5/8")	93-10934
G151	Stud with 10mm/ 3/8" Phillips Head Screw (No. 8)	93-X8-103934-12
G151SS	Stud with S.S. 10mm/ 3/8" Phillips Head Screw (No. 8)	93-XN-103934-12
G152	S.S. Stud with 15mm/ 5/8" Phillips Head Screw (No. 8)	93-X8-103937-20
G153	Stud w. Phillips Head (No. 10-32 Brass Machine x 9.5mm/ 3/8")	93-XB-10708-12
G154	Stud w. Phillips Head (No. 10-32 Brass Machine x 15.9mm/ 5/8")	93-XB-10708-20
G171	Self-Drilling S.S. Screw (No. 10 Deep Phillips Head x 12.7mm/ 1/2")	93-10301-14
G175	Self-Drilling S.S. Screw (No. 10 Deep Phillips Head x 20mm/ 3/4")	93-10301-20
G171FW	Plastic Flexi-Washer for Eyelet, Button or Studs	

Tools For Use With Button Snap/ Durable Dot Fasteners

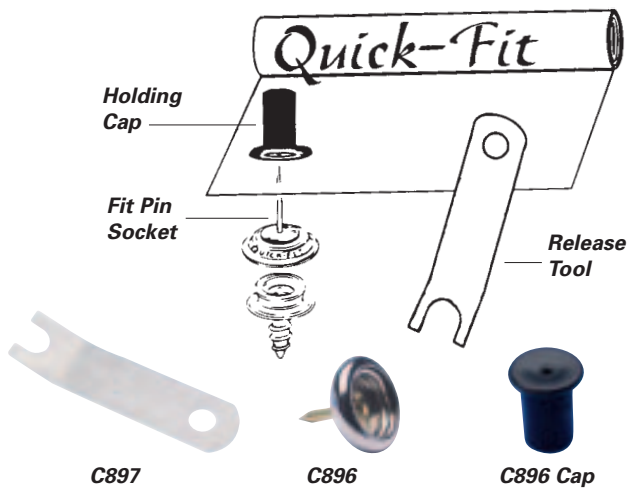


**Button Snap
(Durable Dot)
Fastener Assembly**

Fastener Part No.	Bench Press Tool Part No.	Hand Tool Part No.	Press-N-Snap
G140	C941A	C954/C955	C361
G141	C941A	C954/C955	C361
G142	C941B	C954/C955	C361
G143	C942A	C954/C955	C361
G145	C942B	C954/C956	C361
G146	C942B	C954/C956	C361
G147	C942B	C954/C956	C361
G148	-	-	C474

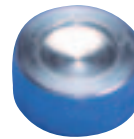
Quick-Fit Canvas Tools

- ▲ Quick-Fit holding tools snap onto existing studs and provide a quick and easy way to hold material while fitting boat covers. Plastic holding cap fits onto the pin, holding the material in place.
- ▲ Quick-Fit tools may be used over and over.
- ▲ Great for fitting with material and also holding paper or plastic material patterns.
- ▲ Accurately mark the cover as to where sockets are placed.
- ▲ Use on tonneau covers, cockpit covers, side curtains, enclosures, biminis, dodgers, etc...
- ▲ Kit contains 50 fit pins, 25 holding caps and 1 release tool.

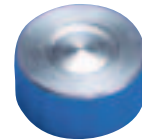


Part No.	Description	Pack Qty
C896CAP	Plastic Holding Cap	each
C896	Fit Pin Socket	50/box
C897	Release Tool	each
C896KIT	Kit	each

Snap Fastener Hand Setting Tools



C955



C956



C954

Part No.	Description	Use With	Fastener
C954	For Buttons or Eyelets	C955/956	G140/1/2/3/5/6/7
C955	For Durable Button	C954	G140/1
C956	For Durable Eyelet	C954	G145/6/7

Pull-the-Dot Fasteners

- ▲ A heavy-duty, three sided locking snap fastener that is built to withstand extreme pressure on three sides without unlocking.
- ▲ When pulled on the fourth side where the Pull-the-Dot trademark appears, the fastener releases instantly.
- ▲ DOT fasteners are sold in full packs of 100 only.



G170



G173



G172



G176



G146

Part No.	Description	Mfr #
G170	Pull-the-Dot Button Cap	92-18100
G172	Pull-the-Dot Socket	92-18201
G173	Pull-the-Dot Stud	92-18303
G176	Pull-the-Dot Screw Stud	92-18307
G145	6.4mm/ 1/8 " Post	93-10412
G146	7.0mm/ 5/16 " Post	93-10413

Note: Special tools are required for Pull-the-Dot G170, G172 and G173.

Page Navigation

Tenax & Stayput Fasteners
See Page 191

Stainless Steel Screws & Pop Rivets
See Page 202



DOT® Fasteners

Commonsense Turnbutton Fastener Studs

Traditional fastenings for boat and marine covers and canvas work, recommended by Bainbridge International, for incorporating secure fastening combined with easy access.

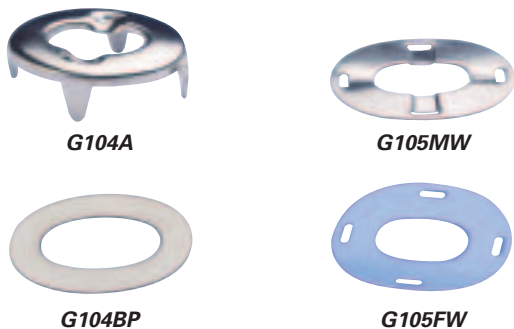
- ▲ All manufactured in nickel plated brass.
- ▲ Available only in full packs of 100.



Part No.	Description	Mfr #
G100	Single Stud with 2 Screw Base	91XB78322
G101	Double Stud with 2 Screw Base	91XB78323
G103A	Single Stud with 2 Prong Fastener Stud	91XB78332
G102A	Double Stud with Two Prongs	91XB78333
G103BP	Clinch Plate for Studs with Two Prongs	91XB78507
G106	Single Stud with Brass Screw (No.7 x 15mm/ 5/8")	91XB78324
G106S	Single Stud with Stainless Steel Screw (No.7 x 15mm/ 5/8")	91XB78324
G107	Double Stud with Brass Screw (No.7 x 15mm/ 5/8")	91XB78325
G108	Single Stud with Rivet Base	91BS78317
G108BP	Backplate for Rivet Base	91BS78502
G101FW	Flexiwasher for G100/G101	91BS78522

Commonsense Turnbutton Fastener Eyelets

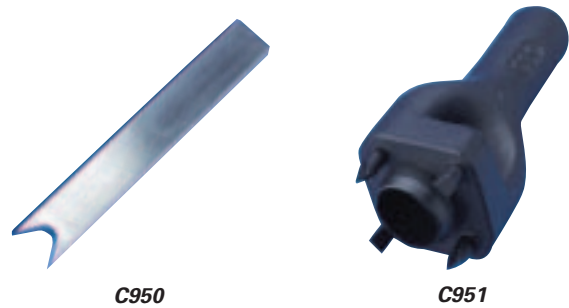
- ▲ All manufactured in nickel plated brass.
- ▲ Available only in full packs of 100.
- ▲ G105FW used to protect fabric from chafe.



Part No.	Description	Mfr #
G104A	Eyelet with Regular Prongs	91BS78403
G105A	Eyelet with Long Prongs	91BS78404
G104BP	Washer for G104A/G105A	91BS78505
G105MW	Metal Washer for Eyelet	91BS78510
G105FW	Plastic Flexi-washer for Eyelet	91PS78511

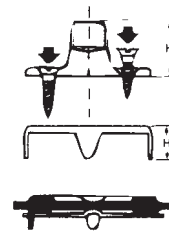
Commonsense Cutting Punches

- ▲ To prolong life of tool, use a mallet and a cutting pad.



Part No.	Description	Fastener
C950	Cutting Punch	G102A
C951	Heavy Duty Cutting Punch	G103A

Tools For Use With Common Sense Fasteners



Turnbutton Fastener Assembly

Fastener Part No.	Hand Tool Part No.
G102	C950
G103	C950
G104	C951 or C136
G105	C951 or 136

Tylaska Snap Setter

A new die solves the problem of setting two fasteners at once, by having two precisely spaced cavities allowing two buttons or eyelets to be installed at the same time.

- ▲ Time saving tool.
- ▲ Made from chrome-moly aerospace steel and is heat treated.



Part No.	Description
C959	Button and Eyelet Tool

Note: One side is for 2 x buttons G140 and the other side is for 2 x eyelets G145.



Lift-the-Dot® Fastener Studs

- ▲ All manufactured in nickel plated brass.
- ▲ Available only in full packs of 100.



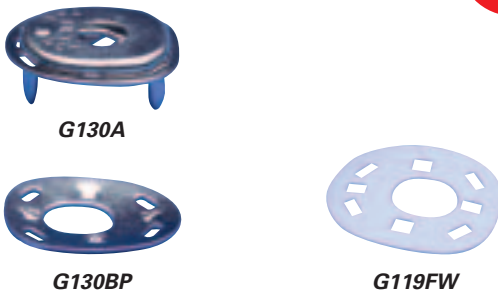
Special Pricing on 10 pack



Part No.	Description	Mfr #
G110	Single Stud with 2 Screw Base	90X316347
G120A	Rivet Stud	90XB16358
G120BP	Washer for Rivet Stud	90BS16509
G119A	Single Stud with Two Prong	90BS16349
G119BP	Clinch Plate for G119A	90BS16501
G113	Stud with Machine Brass Screw	90XB16362-12
G115S	Stud with 10mm/ 3/8" Stainless Steel Screw	90XB16360-12
G116S	Stud with 15mm/ 1/2" Stainless Steel Screw	90XB16360-20
G103BP	Clinch Plate for Stud with 2 Prongs	91BS78507
G117	3/8" Windshield Clip	90X816376
G118	1/2" Windshield Clip	90X816377

Lift-the-Dot® Fasteners

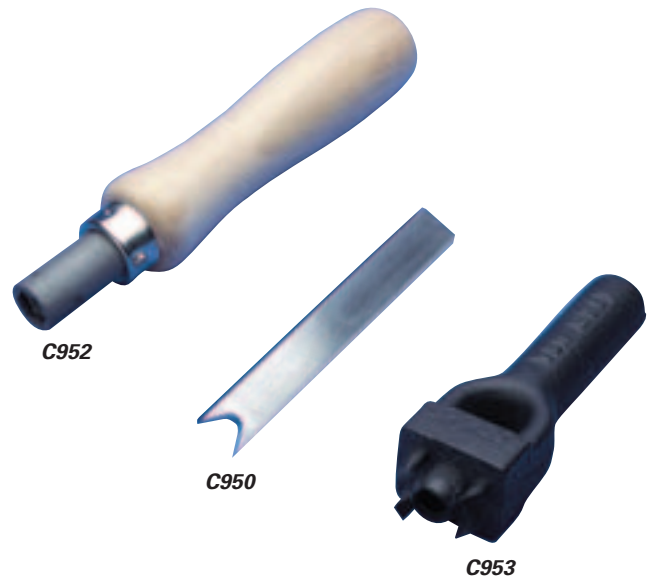
- ▲ All manufactured in nickel plated brass.
- ▲ Available only in full packs of 100.
- ▲ G119FW used to protect fabric from chafe on eyelet.



Part No.	Description	Mfr #
G130A	Regular Socket	90XX16205
G130LP	Long Prong Socket	90XX16206
G130BP	Clinch Plate for Socket	90BS16506
G119FW	Plastic Flexi-washer for Eyelet	90BS16510

Lift-the-Dot® Tools

- ▲ To prolong life of tool, use a mallet and a cutting pad.



Part No.	Description	Fastener
C950	Cutting Punch	G119
C952	Hand Set Hex Head	G113/115/116
C953	Cutting Punch	G130

Tools For Use With Lift-the-Dot Fasteners



Lift-the-Dot Fastener Assembly

Fastener Part No.	Bench Press Tool Part No.	Hand Tool Part No.	Press-N-Snap
G113	-	C952	-
G115	-	C952	-
G116	-	C850	-
G119	-	C952	-
G120	C944A	-	C368
G120A	C944B	-	C369
G130	C945	C135/C953	-

Page Navigation

Mallets & Cutting Pads

See Pages 138 - 139

Bench Press Tools - See Page 188

Hole Cutters - See Page 139



Fastener Tools

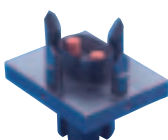
Snapmaster M840

- ▲ The DOT Snapmaster M840 hand-operated attaching press for snap fasteners offers many features of the larger and heavier bench and foot presses, yet is entirely portable and comes in its own carrying case. There are now specialized dies which enable the user to pre-punch the BS78403 and BS78505 eyelet and washer for the Common Sense fastener as well as setting Button fasteners.
- ▲ The Snapmaster is a rugged tool of all aluminum and steel construction with a warranty direct from the manufacturer.
- ▲ Snapmaster M840 comes with carrying case of rugged nylon.

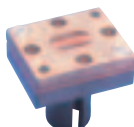


Part No.	Description
C930	Snapmaster M840 - Use with Only Snapmaster Dies

Dies for the Snapmaster M840



C931A



C931B



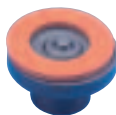
C932A



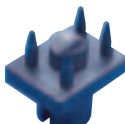
C932B



C933A



C933B



C934A



C934B

Part No.	Mfg #	Description	Use With
C931A	4103	Common Sense Top Punch	G104A/G104BP
C931B	4203	Common Sense Bottom Punch	G104A/G104BP
C932A	4403	Button Snap Top Setting Die	G140/G141
C932B	4303	Button Snap Bottom Setting Die	G142/G155
C933A	4304	Button Snap Top Setting Die	G143
C933B	4404	Button Snap Bottom Setting Die	G145
C934A	4101	Lift-the-Dot Top Punch	G130A
C934B	4201	Lift-the-Dot Bottom Punch	G130BP

Bench Press

- ▲ Deep throat and long padded handle improves leverage.
- ▲ Easily sets snap fasteners or self-piercing grommets.
- ▲ Light weight aluminum - ideal for portable applications where strength and weight savings are critical.
- ▲ Bench press machine will accept most dies with 9.5mm/ 3/8 inch shank.



Part No.	Material	Throat Depth mm/in	Approx Weight lbs	Use With Dies
C620	Steel	121 4 1/2	12	C941-5

Die Tools for use with Bench Press

- All dies have 9.5mm/ 3/8 inch diameter shank.



C941A



C941B



C942A



C942B



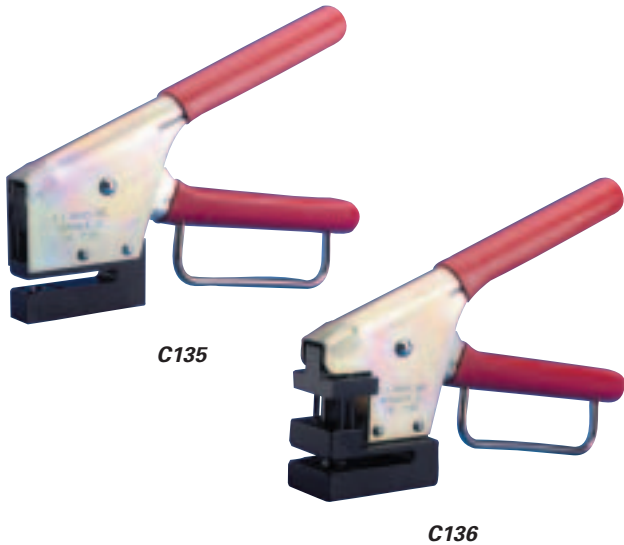
C944A



C944B

Part No.	Die	Mfg #	Use With
C941A	Top	1401	G140/G170 - Button
C941B	Bottom	1410	G142/G155/G172 - Socket
C942A	Top	1412	G143/G173 - Stud
C942B	Bottom	1407	G145/G146/G147 - Eyelet
C944A	Top	1456	G120 - Rivet Stud
C944B	Bottom	1457	G120 - Rivet Stud

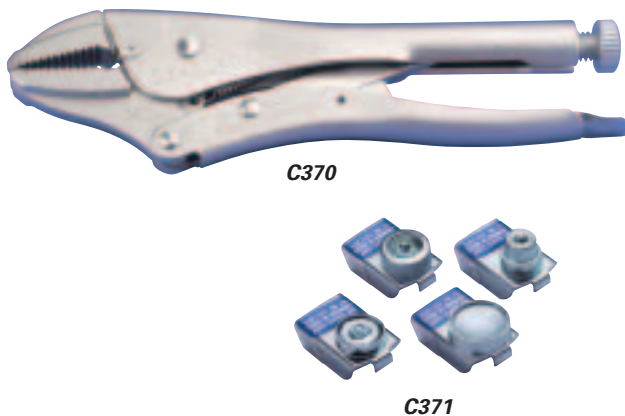
Lever Action Hand Tools



Part No.	Description	For Use With
C135	Hole Cutter for Lift-the-Dot Sockets	G130A
C136	Hole Cutter for Common Sense Eyelets	G104A, G105A

Vise Pliers and Attachments

▲ C371 - Four piece set.



Part No.	Description	For Use With
C370	Vise Pliers	C371
C371	Die Set for Button Snap Fasteners	G140/7

Dies for Self-Piercing Grommets

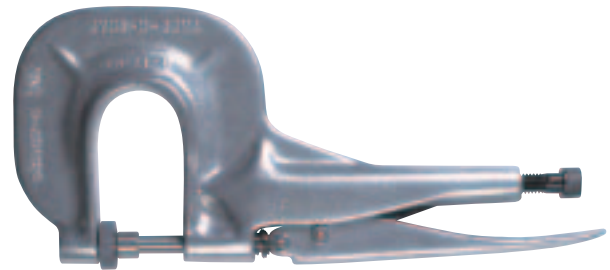
▲ Self holding Press-N-Snap grommet dies for use with self-piercing grommets and washers.
 ▲ Two piece sets.



Part No.	Size	Mfg #
C366	Size 1, D101 or D111	230
C367	Size 2, D102 or D112	250

Press-N-Snap Tool

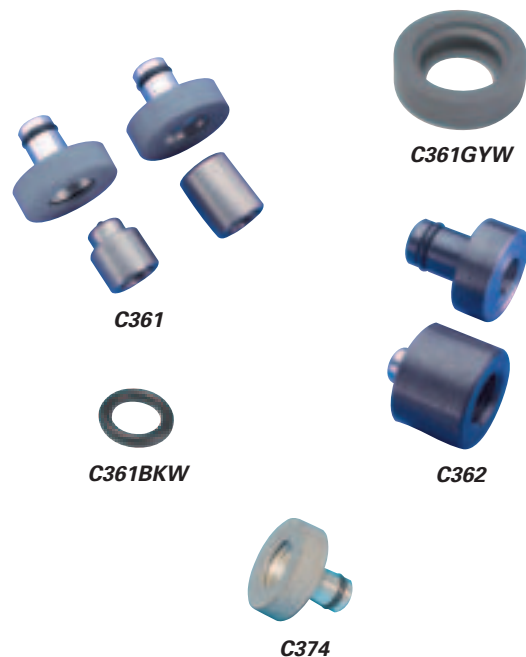
▲ A hand action tool for closing grommets, rivets and setting button snap fasteners.
 ▲ C360 tool comes complete with die sets for No1 washer grommets and Button Snaps.



Part No.	Description	Fastener
C360	Press-N-Snap Tool	G140/147, D604

Dies for Press-N-Snap Tool

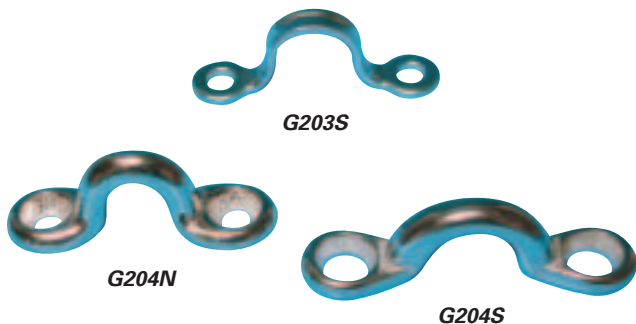
▲ C361 - Four piece set.
 ▲ C362/363 - Two piece sets.



Part No.	Description	For Use With
C361	Button Fasteners, Set (Includes 1 Washer Grommet set)	G140/7
C362	No 0 Spur Grommet, Set	D003
C363	No 1 Spur Grommet, Set	D004
C361GYW	Spare Gray Washer	
C361BKW	Spare Black "O" Ring	
C368	Die for L-T-D Washer #8	G120BP
C369	Die for L-T-D Stud #58	G120A
C374	Die for Gypsy Stud #22	G148

Hooks, Eyes & Buckles

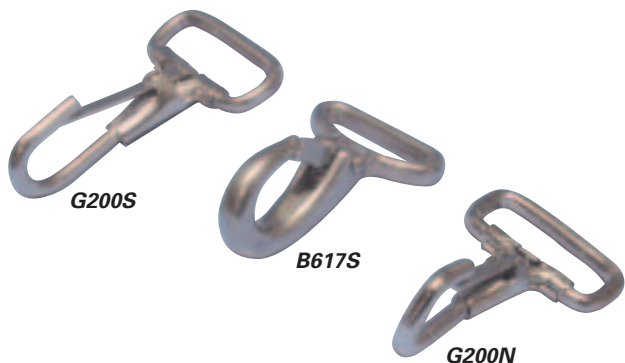
Eye Straps



Part No.	Description	Pack Qty
G203S	Stamped Stainless Steel	100
G204N	Cast Nickel Plated Brass	100
G204S	Cast Polished Stainless Steel	100

Snap Hook - Webbing

▲ G200N/S has rectangular eye for webbing.



Part No.	Material	Length: mm/in	Inside Eye: mm/in	Pack Qty
G200N	Nickel Plated Brass	50 2	25 1	100
G200S	Stainless Steel	50 2	25 1	100
B617S	Stainless Steel	50 2	25 1	100

Snap Hooks

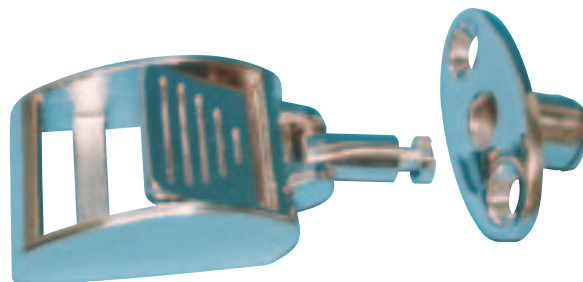
- ▲ Brass snap hooks are an all purpose hook used in many applications where loads are relatively low.
- ▲ Stainless steel offers the same efficient and easy to use shape, but has much greater safe working loads.



Part No.	Material	Type	Length: mm/in	Inside Eye Diameter: mm/in	Pack Qty
B610	Brass	0	53 2 1/2	10 3/8	50
B611	Brass	1	72 2 7/8	15 5/8	50
B611N	Brass/Nickel Plate	1	72 2 7/8	15 5/8	50
B612	Brass	2	81 3 1/4	20 3/4	5
B610S	Stainless Steel	0	53 2 1/2	10 3/8	50
B611S	Stainless Steel	1	72 2 7/8	15 5/8	50
B612S	Stainless Steel	2	81 3 1/4	20 3/4	50

Swivel Webbing Buckle with Socket

- ▲ Swivel pin allows installer to compensate for angles.
- ▲ Turn buckle 180° for easy removal from socket.
- ▲ Type 316 stainless steel.



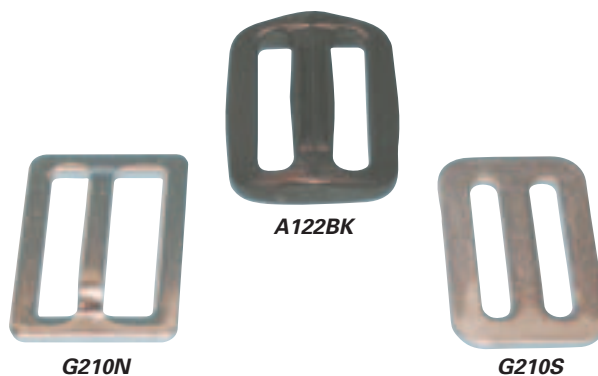
Part No.	Description	Pack Qty
G742S	Swivel Web Buckle	50

Sliding Bar Buckles



Part No.	For Webbing: mm/in	Material	Pack Qty
G221	25 1	Stainless Steel/Nylon	10
G221S	25 1	Stainless Steel	10
G222	50 2	Stainless Steel/Nylon	10
G222S	50 2	Stainless Steel	10

Adjuster Buckles



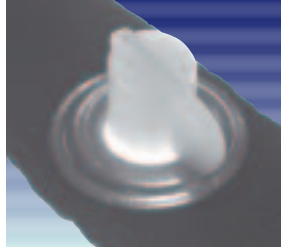
Part No.	For Webbing: mm/in	Material	Pack Qty
G210N	25 1	Nickel Plated Brass	100
G210S	25 1	Stainless Steel	100
A122BK	25 1	Plastic	100

Stayput Fasteners

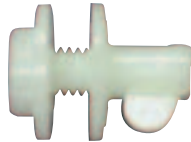
- ▲ Stayput fasteners are manufactured from UV stabilized nylon with nickel plated brass tabs and pivot pins.
- ▲ G850 - Horizontal single stud with two screw base. Works with No 1 spur or No 2 plain grommet.
- ▲ G852 - Vertical single stud with two screw base, Works with No 1 spur or No 2 plain grommet.
- ▲ G854 - Fitted through fabric or through a grommet.



G852



G850



G854

Part No.	Description	Color	Pack Qty
G850	Horizontal Stud	White	100
G852	Vertical Stud	White	100
G854	Canvas-to-Canvas	White	100

Snapfast

- ▲ Non-corrosive directional fastener.
- ▲ Unlocks in one direction.
- ▲ Stainless steel pronged cap self-pierces most fabrics.
- ▲ Install covers onto fiberglass, wood or other hard surfaces with no. 8 screw.
- ▲ Stud attaches to fabric with long eyelet.



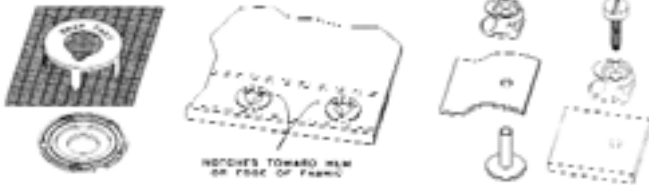
G061



G063BK



G062BK



Part No.	Description	Color	Pack Qty
G061	Stainless Steel	-	100
G061LP	Stainless Steel	-	100
G062BK	Socket	Black	100
G062WT	Socket	White	100
G063BK	Stud	Black	100
G063WT	Stud	White	100

Tenax Fasteners

- ▲ Used on superior quality boats and cars.
- ▲ Positive lock.

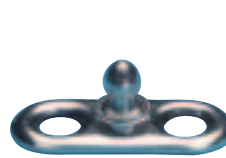


G165

G167

G167S

G166



G168



G164



G165TOOL

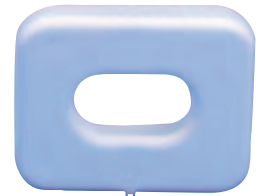
Part No.	Description	Pack Qty
G165	Standard Pull Top with Lock Washer	10
G166	Cloth Base Stud with Lock Washer	10
G167	Wood Screw Stud	10
G167S	Stud - Self Tap	10
G168	2 Screw Stud	10
G165TOOL	Tool for Locating Ring	1
G164	#15 Machine Screw	10

Permalock Fasteners

- ▲ All manufactured from Dupont® non-corrosive, UV stabilized "Zytel".
- ▲ Attach with flathead screws or rivets.
- ▲ Can be attached using 2 x G145/G147 eyelets.
- ▲ Available only in full packs of 100.



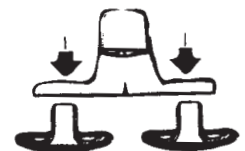
G160WT



G161WT



G160AWT



Turnbutton with Button Snap Fastener Assembly



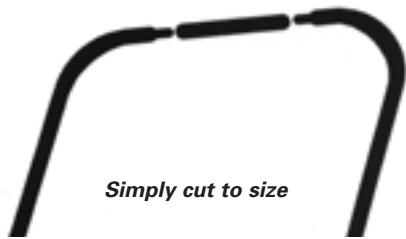
C140

Part No.	Description	Color	Pack Qty
G160BK	Single Stud with 2 Screw Base	Black	100
G160WT	Single Stud with 2 Screw Base	White	100
G160ABK	Backplate for Stud	Black	100
G160AWT	Backplate for Stud	White	100
G161BK	Eyelet Clinch Lock (2 Part)	Black	100
G161WT	Eyelet Clinch Lock (2 Part)	White	100
C140	Eyelet Cutting Tool	-	1

Frame Kit & Heavy Duty Canopy Track

Universal Boat Top Frame Kits

- ▲ Ready to assemble kit form.
- ▲ Easy to use, fits boats to 2.4m/96 inches wide.
- ▲ Manufactured from marine grade aluminum tube and die cast hardware.
- ▲ No bending tools required.
- ▲ Can ship UPS.

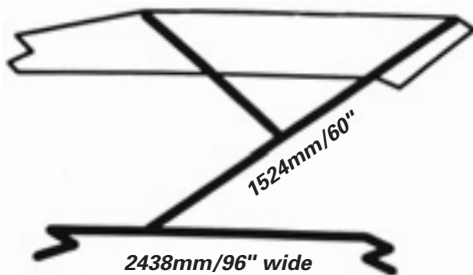


Simply cut to size

- ▲ Packaged 1 boat set per box with hardware. Boxes can be shipped by UPS. Made with 22mm/ 3/8 inch O.D. x 0.058" wall, 6063 T832 hard drawn marine aluminum tubing with a brite anodized finish and joined together with inside sleeves. The radius of the bends are 152mm/6 inch I.D.

Extra Large 2 Bow Frame Kit

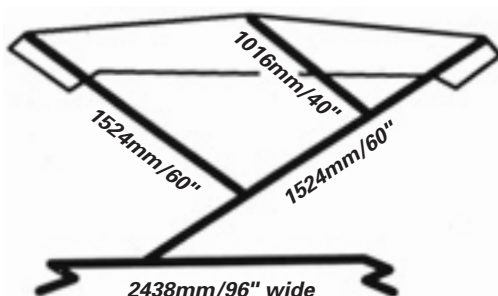
- ▲ Kit contains:
4 x die cast eye ends.
2 x die cast jaw slides.
2 x die cast hinges.
2 x bow assembly pre-formed 22mm/ 3/8 inch aluminum tubing.



Part No.	Description
G522A	2 Bow Aluminum Frame Kit

Bimini 3 Bow Frame Kit

- ▲ Kit contains:
6 x die cast eye ends.
4 x die cast jaw slides.
2 x die cast hinges.
3 x bow assembly pre-formed 22mm/ 3/8 inch aluminum tubing.



Part No.	Description
G523A	3 Bow Aluminum Frame Kit

Heavy Duty Canopy Track System

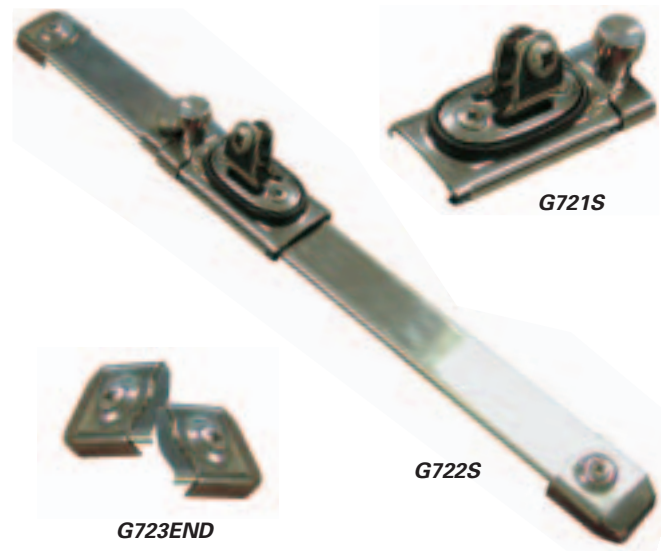
- ▲ Top quality way to solve the problem of improving canopy or enclosure.
- ▲ This unique system is easily fitted and adds extra functionality to most modern styles of canopy or enclosure.
- ▲ 25mm/1 inch H.D. track system.
- ▲ Stainless steel fittings pre-assembled to car.
- ▲ Extruded aluminum track & car.
- ▲ Car secured by spring loaded stops.



Part No.	Description	Pack Qty
G710	Car Includes S.S. Universal Deck Hinge	Each
G712	1.2m/48" Aluminum Track	Each
G718	1.8m/71" Aluminum Track	Each
G713	Track End Stops - Sold in Pairs	Pair

Duo Track System

- ▲ Quick release adjustment.
- ▲ Manufactured from 316 stainless steel.
- ▲ Ultra low profile design with positive locking mechanism.
- ▲ Easily operated by hand or foot.
- ▲ Ideal for mounting biminis on center cockpits.



Part No.	Tube (External): mm/in	Pack Qty
G722S	Duo Track - 1.8 Meters Long	Each
G723END	Duo Track Stainless Steel End Stop	Each
G721S	Duo Track Car with Low Profile Deck Hinge (G645S)	Each
G721STOP	Duo Track Car Locking Stop	Each

Marine Cover Fittings

Stainless Steel Boat Top Fittings

Deck Hinge Fittings - Screw Pin

- ▲ Die cast type 316 stainless steel.
- ▲ Mirror polished finish.



Part No.	Description	Pack Qty
G622S	Flat Hinge with Screw Pin	50
G623S	Angle Hinge with Screw Pin	50
G626S	Concave Hinge with Screw Pin	50

Deck Hinge Fittings - Removable Pin

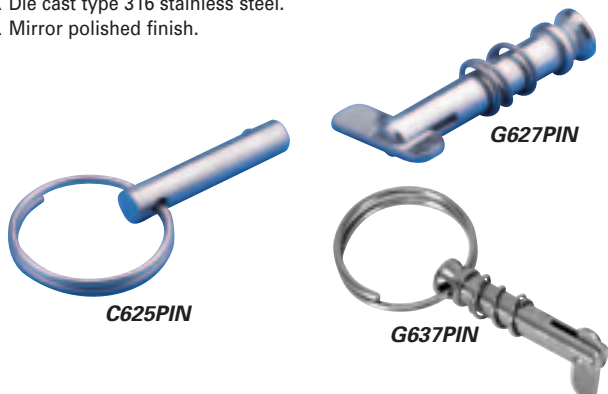
- ▲ Die cast type 316 stainless steel.
- ▲ Mirror polished finish.



Part No.	Description	Pack Qty
G625S	Flat Hinge with Removable Drop Nose Pin	50
G625SQP	Flat Hinge with Quick Release Pin	50
G628S	Angle Hinge with Removable Drop Nose Pin	50
G628SQP	Angle Hinge with Quick Release Pin	50
G651S	Concave Hinge with Removable Drop Nose Pin	50

Removable Pin

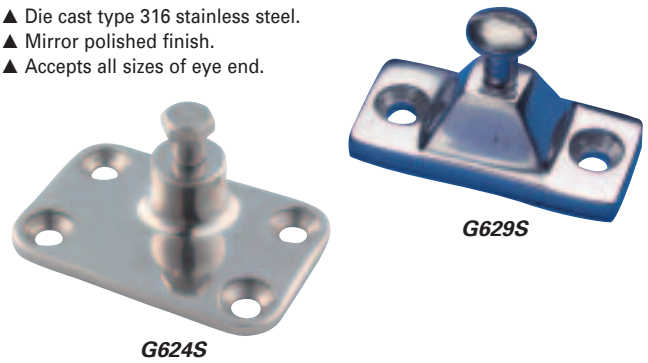
- ▲ Die cast type 316 stainless steel.
- ▲ Mirror polished finish.



Part No.	Description	Pack Qty
G627PIN	Drop Nose Pin 6.4mm/ ¼ " O.D.	50
G625PIN	Quick Release Pin 6.4mm/ ¼ " O.D. with S.S. Ring	50
G637PIN	Drop Nose Pin 6.4mm/ ¼ " O.D. with S.S. Ring	50

Side Mount Fitting

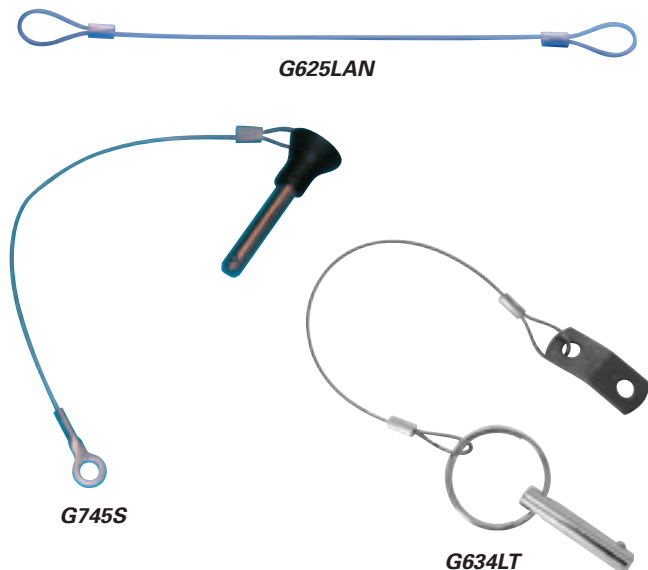
- ▲ Die cast type 316 stainless steel.
- ▲ Mirror polished finish.
- ▲ Accepts all sizes of eye end.



Part No.	Description	Pack Qty
G624S	4 Hole Side Mount 8.0mm/ ⅜ " Bolt	50
G632S	4 Hole Side Mount 6.4mm/ ¼ " Bolt	50
G629S	2 Hole Side Mount 6.4mm/ ¼ " Bolt	50

Lanyard

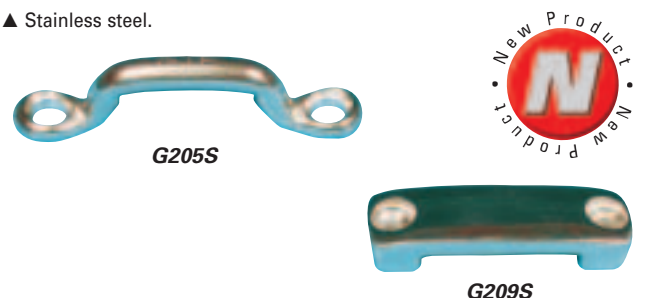
- ▲ Lanyard is used to attach Quick release pin to the deck hinge to prevent accidental loss.



Part No.	Description	Pack Qty
G625LAN	Stainless Steel Wire - 152mm/6"	50
G634LT	6.4mm/ ¼ " I.D. Pin, 152mm/6" S.S. Wire with Tab	50
G745S	Quick Release 6.35mm/ ¼ " x 25mm/1"	50

Footman Loop - Web Bridge

- ▲ Stainless steel.



Part No.	Description	Width: mm/in	Pack Qty
G205S	Stainless Steel	25 1	50
G209S	Stainless Steel	25 1	50

Marine Cover Fittings



Stainless Steel Boat Top Fittings

Universal Deck Hinges - All Stainless Steel

Universal deck hinge compensates for different angles of decks and coamings. Made from mirror polished stainless steel, even vertical surfaces can be accommodated.

- ▲ Die cast type 316 stainless steel.
- ▲ Mirror polished finish.
- ▲ Accepts all sizes of eye end.
- ▲ Compensates for different deck and coaming angles including vertical surfaces.

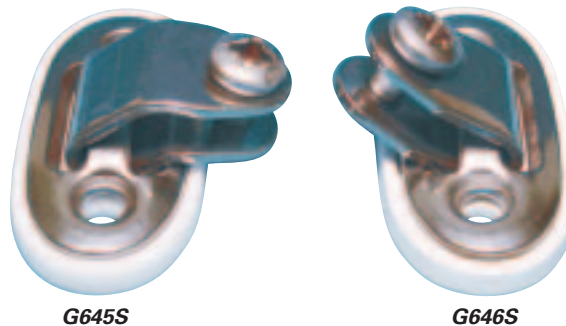


Part No.	Description	Pack Qty
G615S	Universal Deck Hinge with Screw	50



Low Profile Deck Hinge

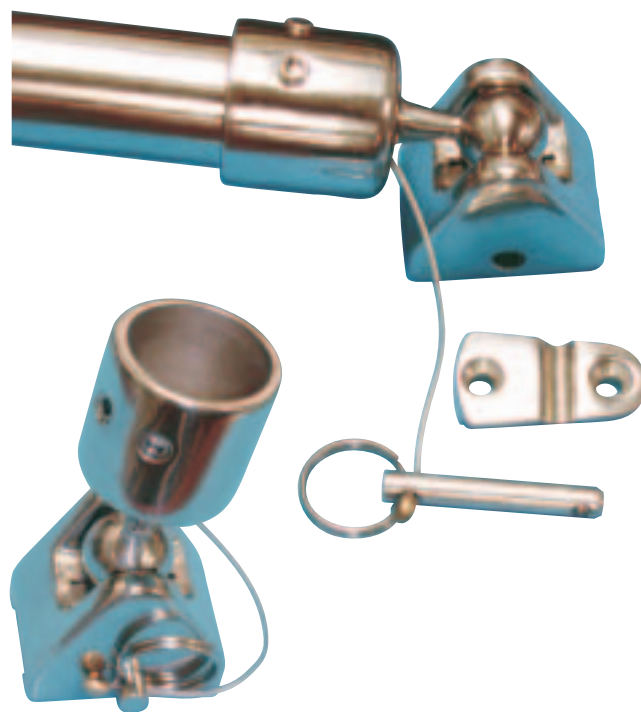
- ▲ Made in 316 stainless steel.
- ▲ Use G646S for larger angles.



Part No.	Description	Pack Qty
G645S	Angle Deck Hinge	50
G646S	Straight Universal Deck Hinge	50

Ball Swivel with Quick Release Deck Mount & Eye End

- ▲ Manufactured from 316 stainless steel.
- ▲ Greater range of motion.
- ▲ Base screws to the deck.
- ▲ Removing quick pin allows hinge to slide off the base.
- ▲ Double set screws.



Part No.	Description	Pack Qty
G771S	22mm/3/8" Ball Swivel Deck Hinge	50
G731S	25mm/1" Ball Swivel Deck Hinge	50

Stainless Steel Boat Top Fittings

HD Folding Deck Hinge

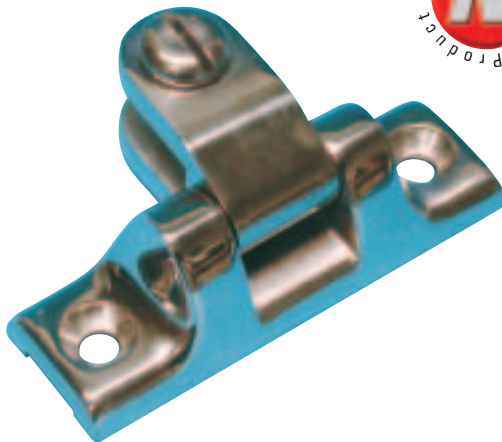
- ▲ Hinge system compensates for different angles of deck and coamings without the need for wedges.
- ▲ Folds flat when canopy is removed preventing snagging and injury.
- ▲ Manufactured from type 316 stainless steel.
- ▲ Use with G611S, G621S, G631S and G641S.



Part No.	Description	Pack Qty
G607S	Stainless Steel HD Folding Deck Hinge	50

Universal Flat Deck Hinge

- ▲ Manufactured from 316 stainless steel.
- ▲ Deck hinge swivels 180°.



Part No.	Description	Pack Qty
G692S	Flat Universal Deck Hinge	50



Quick Release Deck Mount

- ▲ Spring-loaded release button ejects eye end for almost instant frame removal.
- ▲ Stylish and unique design.
- ▲ Manufactured from type 316 stainless steel.
- ▲ Use with G611S, G621S, G631S and G641S.



G605SHWT



G605SHBK



G606S



Part No.	Description	Pack Qty
G605S	Quick Release Deck Mount	24
G606S	22mm/ 7/8" Quick Release Side Mount	50
G608S	25mm/1" Quick Release Side Mount	50
G605SHNT	Shim - Natural	50
G605SHBK	Shim - Black	50

Heavy Duty Quick Release Deck Mount

- ▲ Heavy duty design & construction.
- ▲ Allows full 360 degree rotation.
- ▲ Three position lock.
- ▲ Accepts extra wide tab eye ends.
- ▲ Secure three point mounting.



Part No.	Finish	Pack Qty
G604S	316 Stainless Steel	1

Stainless Steel Boat Top Fittings

Eye Ends

- ▲ Die cast type 316 stainless steel.
- ▲ Mirror polished finish.
- ▲ G631SHD & G641SHD have 2 set screws.
- ▲ 6.35mm/¼" hole in eye.



G621S



G631SHD



G641SHD

Part No.	Description	Pack Qty
G611S	Eye End for 19mm/¾" Tube	50
G621S	Eye End for 22mm/½" Tube	50
G631S	Eye End for 25mm/1" Tube	50
G631SHD	Heavy Duty Eye End for 25mm/1" Tube with 2 Set Screws	50
G641SHD	Heavy Duty Eye End for 32mm/1½" Tube with 2 Set Screws	50

Ball Swivel Jaw Slide and Eye Ends

- ▲ Increase frame versatility.
- ▲ Allows full movement range.
- ▲ Manufactured from 316 stainless steel.
- ▲ Double set screws.



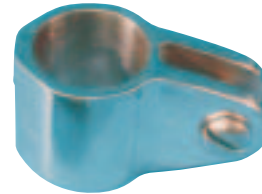
Part No.	Description	Pack Qty
G770S	22mm/½" Ball Swivel Jaw	50
G730S	25mm/1" Ball Swivel Jaw	50

Jaw Slides/Eye Ends

- ▲ Die cast type 316 stainless steel.
- ▲ Mirror polished finish.
- ▲ G630SHD & G640SHD have 2 set screws.



G620S



G630S



G640SHD

Part No.	Description	Pack Qty
G610S	Jaw Slide for 19mm/¾" Tube	50
G620S	Jaw Slide for 22mm/½" Tube	50
G630S	Jaw Slide for 25mm/1" Tube	50
G630SHD	Heavy Duty Jaw Slide for 25mm/1" Tube with 2 Set Screws	50
G640SHD	Heavy Duty Jaw Slide for 32mm/1½" Tube with 2 Set Screws	50

Double Jaw Slide with Swivel Hinge

- ▲ Manufactured from 316 stainless steel.
- ▲ Allows 2 eye ends to be connected to the same jaw.
- ▲ Accepts all sizes of eye end.



Part No.	Description	Pack Qty
G687S	22mm/½" Double Jaw with Swivel Hinge	50
G697S	25mm/1" Double Jaw with Swivel Hinge	50

Stainless Steel Boat Top Fittings

Split Jawslide/Rail Fitting

Mounts without the need to disassemble the rail. Ideal for use on rails that are welded together. Simply slide the two halves together on either side of the rail and they interlock. The fitting fastens easily with a single nut and bolt to the rail in the exact position you desire.

- ▲ Package consists of one rail fitting and a stainless steel screw and nut.
- ▲ Type 316 stainless steel.
- ▲ Order G625PIN, G627PIN or G830SN to connect eye end.



Part No.	Description	Pack Qty
G820S	22mm/ 7/8 " Outside Diameter	50
G830S	25mm/1 " Outside Diameter	50
G840S	31mm/1 1/4 " Outside Diameter	50

Side Mount Jaw Slide

- ▲ Allows outboard or inboard mounts of Gemlock struts.
- ▲ Outboard mount allows the Gemlock strut to act as grab rail.
- ▲ Grab rail stands off to allow bimini to fold flat.



Part No.	Description
G635S	25mm/1" Stainless Steel



Black Nylon Boat Top Fittings

High strength black nylon fittings have excellent resistance to UV. Works with either stainless steel or aluminum tubing.



G621BK



G620BK



G622BK

Part No.	Description	Pack Qty
G621BK	For Use with Tube Outside Diameter 22mm/ 7/8 "	50
G620BK	For Use with Tube Outside Diameter 22mm/ 7/8 "	50
G622BK	Flat Fitting with Screw Pin	50

Stainless Steel Boat Top Fittings

Frame Tube Hinge with Quick Release Locking Pin

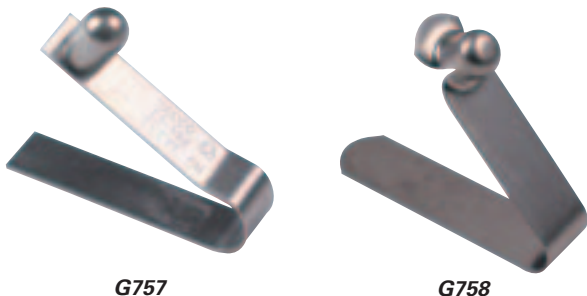
- ▲ Heavy duty design and construction.
- ▲ Allows frame or strut to fold.
- ▲ Quick release locking pin, locks only when straight.
- ▲ Manufactured from 316 stainless steel.



Part No.	Description	Tube Size: mm/inch	
G744S	Heavy Duty Stainless Steel Tube Hinge	25	1
G747S	Heavy Duty Stainless Steel Tube Hinge	22	¾

Stainless Steel Spring Ball

- ▲ All stainless steel designed for tubing 19mm/¾ inch to 32mm/1¼ inch inside diameter.



G757

G758

Part No.	Description	Pack Qty
G757	Stainless Steel Snap - Spring Ball - Solid Head	100
G758	Stainless Steel Snap - Spring Ball - Hollow Head	100

Stainless Steel Set Screws

- ▲ Spare stainless steel set screws for eye ends or jawslides.
- ▲ Available only in full packs of 10.

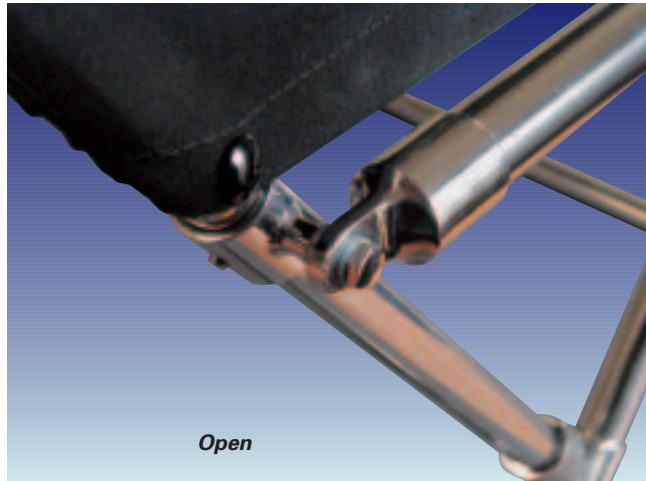


G620SS

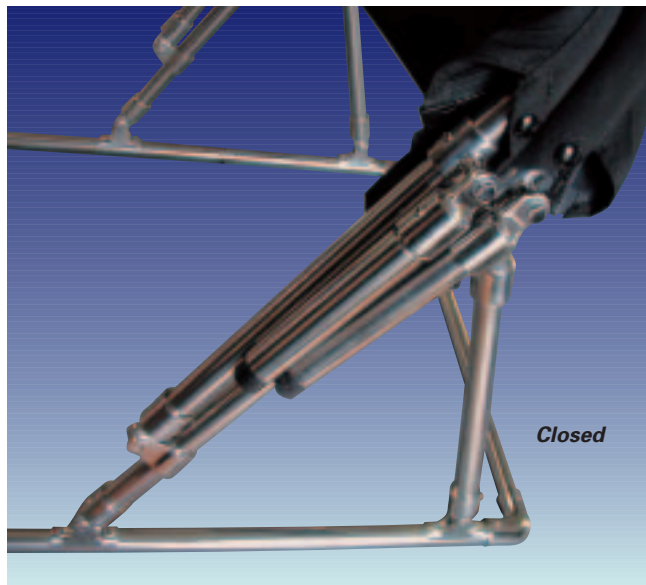
G622SS

G830SN

Part No.	Description	Qty Per Pack
G620SS	6.4mm/¼" - 20 Stainless Steel Set Screws	10
G622SS	Spare Screw for G622S, G623S, G626S, G615S etc.	10
G830SN	Hex Head Screw & Nut	10



Open



Closed

Gemini Sliding Side Mount

- ▲ Allows outboard or inboard mounts of Gemlock struts.
- ▲ Outboard mount allows the Gemlock strut to act as grab rail.
- ▲ Grab rail stands off to allow bimini to fold flat.



Part No.	Description
G633S	22mm/¾" Stainless Steel
G635S	25mm/1" Stainless Steel

Gemlock Collapsible Strut & Hinge



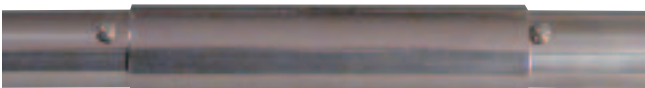
Open



Closed

Gemlock Pre-Made Strut with Hinge

- ▲ Completely assembled struts with stainless steel hinges, either 22mm/ 7/8 inch or 25mm/1 inch tubing, locking sleeve and spring balls.
- ▲ Uses: folding dodger frames (DropTop™ style), spreader bars on biminis (strapless biminis), stowable dinettes and chart tables, cantilever supports for swim platforms and drop seats, support struts for davits and towers.



Part No.	Description	Tube Size: mm/in	Length: mm/in
G750SSET/2	Adjustable Strut	22 7/8	600 24
G750SSET/4	Adjustable Strut	22 7/8	1200 48
G751SSET/2	Adjustable Strut	25 1	600 24
G751SSET/4	Adjustable Strut	25 1	1200 48

*Note: Single strut – 2 struts required to make a folding top.

Gemlock Collapsible Hinge

- ▲ The Gemini™ hinge (patent pending) and strut assembly provides a simple way to build collapsible supports and folding frames with no disassembly of frame parts. To fold the strut, slide the locking sleeve and pop the hinge.
- ▲ Can be fitted to existing frames.
- ▲ Unique link hinge design allows strut to fold completely flat.
- ▲ External sleeve locks joint and provides full working strength to the strut, protecting the hinge from loads.
- ▲ Spring balls lock sleeve in place to prevent accidental folding.
- ▲ A complete installation for each side will require 1 hinge, 1 locking sleeve, 2 snap buttons and 2 set screws.
- ▲ Full installation instructions sheet available upon request.
- ▲ Use for folding: spray hoods, biminis and tables.

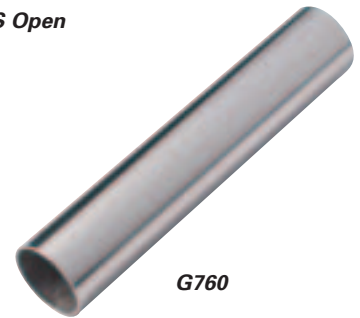
Gemlock Hinge & Sleeve



G750S Open



G750S Closed

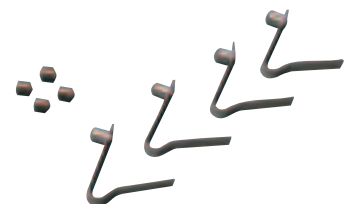


G760

Part No.	Description	Tube Diameter: mm/in	Wall Thickness: mm/in
G750S	S.S. Gemini Hinge	22 7/8	1.6 0.065
G751S	S.S. Gemini Hinge	25 1	1.6 0.065
G760	S.S. Locking Sleeve	22 7/8	1.6 0.065
G761	S.S. Locking Sleeve	25 1	1.6 0.065
G761/10	S.S. Locking Sleeve	25 1	1.6 0.065

Gemlock Stainless Tube Hinge Kit

- ▲ All components required to make a pair of collapsible supports and folding frames.
- ▲ Easy to purchase all parts to make two complete hinges in a single kit.
- ▲ Each kit contains: 2 x S.S. hinges, 2 x S.S. locking sleeves, 4 x S.S. spring balls, 4 x S.S. set screws.
- ▲ Can make 2 struts for folding top.

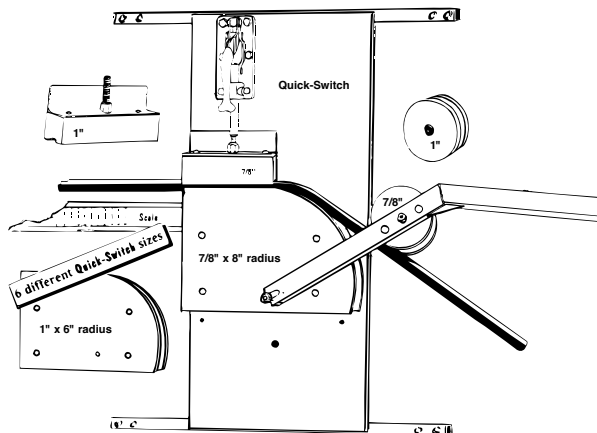


Part No.	Description	Tube Size: mm/in
G750SSET	Kit - Makes 2 Hinges	22 7/8
G751SSET	Kit - Makes 2 Hinges	25 1

Tube Benders

Bendarc Tube Bender

- ▲ Bendarc Quick-Switch - Gives strong bends with smooth, rounded corners.
- ▲ Designed for wall or bench mounting and easy pull down use, Bendarc can bend 152mm/6 inch radius to 300mm/12 inch radius, depending on which dies are purchased.
- ▲ Easy, pull-down use. Wall mounting allows your body weight to help.
- ▲ Quick and easy to switch sizes.
- ▲ Constructed of boiler plate steel with bearing supported roller and powerful 998kg/2200 lb. clamp.
- ▲ Rollers are high density polymer for mar resistant contact with fine tubing finishes.
- ▲ Other size radius dies, rollers are available.



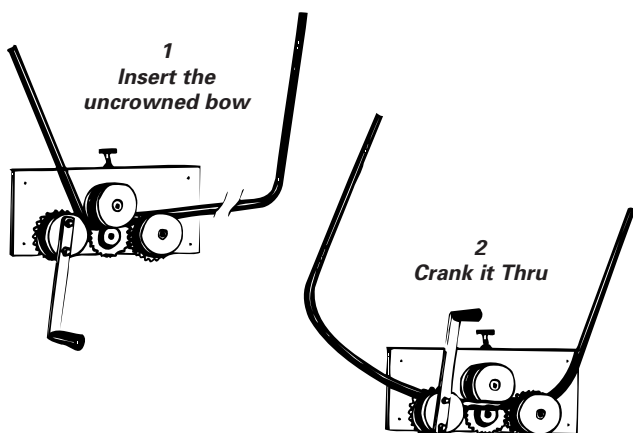
Part No.	Standard Bendarc With Dies To:
C997	Bend 25mm/1" Tube to 203mm/8" Radius Bend 25mm/1" Tube to 250mm/10" Radius

Custom order to your specification.
Order one or several die sizes.



Crownarc Tube Bender

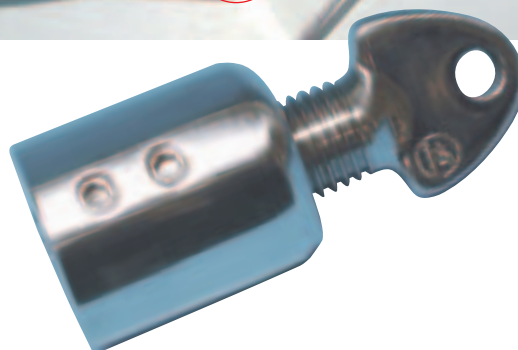
- ▲ Crownarc - The only crowner with gear drive.
- ▲ Mounted on the wall, a table or on the side or rear of a truck, Crownarc puts a crown onto tubing.
- ▲ Bends 19, 22 & 25mm/ 3/8", 1/2" & 1 inch outside diameter tubing using the same dies.
- ▲ Dies and rollers are mounted on a backplate of boiler plate steel.
- ▲ Rollers are high density polymer.
- ▲ The center roller is fully adjustable.



Part No.	Bends Tube Size
C998	19, 22 & 25mm/ 3/8", 1/2" & 1" Tubing

Adjustable Eye Ends

- ▲ Designed to tighten canvas on bimini tops.
- ▲ A pair can adjust 2 inches in length.
- ▲ One pair = one right and one left thread.
- ▲ Requires one pair per strut.



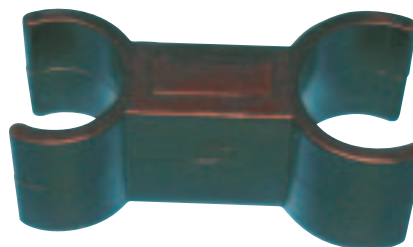
Part No.	Description	Pack Qty
G845S	22mm/ 3/8" Tube Adjuster	Pair
G846S	25mm/1" Tube Adjuster	Pair

You need 2 pairs to make a set.



Canvas Clip

- ▲ Helps to hold fabric on frame while patterning.
- ▲ One end can be used on 3/8", the other is for 1".

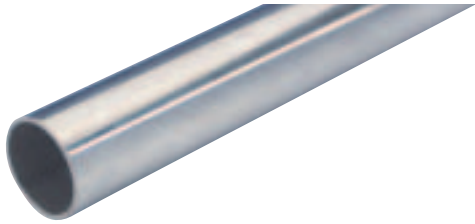


Part No.	Description	Pack Qty
G380	Canvas Clip	50

Tube & Frame Accessories

Stainless Steel Tubing

▲ Tubing is sold in 7.3m/24 foot lengths only, and must ship by common carrier.

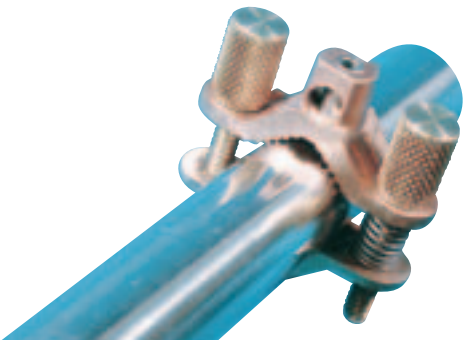


Part No.	Outside Tube Diameter: mm/in	Wall Thickness: mm/in
G500S	22 ¾	1.2 0.049
G501S	25 1	1.2 0.049
G503S	22 ¾	1.7 0.065
G505S	25 1	1.7 0.065

Drill Steady

Designed to clamp onto frames or tubing without disassembling frame.

- ▲ Swing over design.
- ▲ Bronze cast body.
- ▲ Requires ¼" cobalt drill bit to set No.8 screws.



Part No.	Description
C899	Drill Steady

Sunblocker Clip

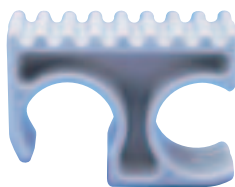
Sunblocker is a self insulated protective clip which eliminates contact between your metal tubular top frame and the clear plastic windows.

Two or three Sunblocker clips on metal frame tubing can give maximum protection against destruction of clear plastic windows, by reducing singeing, scorching and heat cracking.

- ▲ Marine gray color.
- ▲ Designed cooling air vents.
- ▲ All rounded corners eliminates abrasion.



G638



G738

Part No.	Description	Pack Qty
G638	Single For Use with Tube Outside Diameter 22mm/ ¾"	50
G639	Single For Use with Tube Outside Diameter 25.4mm/1"	50
G738	Twin For Use with Tube Outside Diameter 22mm/ ¾"	50

Polyester Lacing Cord

- ▲ Solid braid are made from continuous filament, high tenacity yarns. Lockstitch construction offers excellent abrasion resistance, maintains uniform diameter and are superior to Diamond braid.
- ▲ Resists UV rays. Best for marine and outdoor use.
- ▲ Will not harden.
- ▲ Use for lacing line for top, side curtains, tie downs, netting and marine covers.

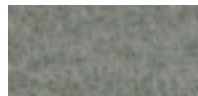
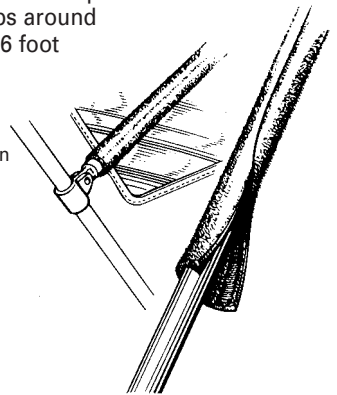


Part No.	Description	Diameter: mm/in	Reel Length: m/ft
E350P	Size 4 White	3.0 ¼	305 1,000
E350PBK	Size 4 Black	3.0 ¼	305 1,000
E358P	Size 5 White	3.7 ½	305 1,000
E352P	Size 6 White	4.8 ¾	305 1,000
E352PBK	Size 6 Black	4.8 ¾	305 1,000
E354P	Size 8 White	6.3 ¼	305 1,000

SUN SOX To Protect Plastic Windows

Windows resting against hot tube framing can be scorched, turn colors and be destroyed. New SUN Sox offer a simple and inexpensive protection. Made from a non-woven poly blend of fibers with a velcro strip on one edge, SUN SOX simply wraps around tubing and secures to itself. 6 foot lengths can be cut to match tube size and come in six attractive colors.

- ▲ Simple do it yourself installation offers easy on easy off or leave year round.



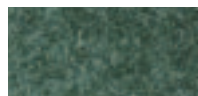
Gray



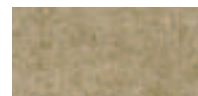
Blue



Black



Green



Beige



Dubonnet

Part No.	Color	Length m/ft
LS401GY	Gray	1.8 6
LS401BU	Blue	1.8 6
LS401BK	Black	1.8 6
LS401GR	Green	1.8 6
LS401TN	Beige	1.8 6
LS401DB	Dubonnet	1.8 6

Grab Rail & Fittings

Stainless Steel Grab Rail w/Studs

- ▲ Manufactured from 316 stainless steel.
- ▲ Heavy duty polished construction.
- ▲ Stainless steel bolt with 1/4" - 20 threads x 1 3/4" long.



Part No.	Description	Pack Qty
G380/18	18" (457mm) Stainless Steel Grab Rail	10
G380/24	24" (610mm) Stainless Steel Grab Rail	10

J-Hook

- ▲ Stainless steel hook to fit over 1 1/8" (29mm) gunwale.
- ▲ Requires no fitting on deck.
- ▲ 3/4" (19mm) wide x 2 1/2" (64mm) long.

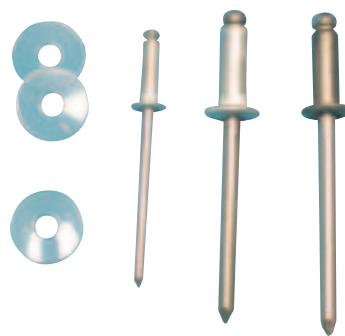


Part No.	Description
J858S	Stainless Steel J-Hook



Pop Rivets

- ▲ Use washer to help insulate metals.
- ▲ Sold in full packs of 100 only.



Part No.	Diameter: mm/in	Length: mm/in	Finish
G171FW	4 3/8	-	Plastic Washer
D390	3 1/8	6 - 8 1/4 - 3/8	Aluminium
D392	4 3/8	6 - 10 1/4 - 3/8	Aluminium
D392S	4 3/8	6 - 10 1/4 - 3/8	Stainless Steel

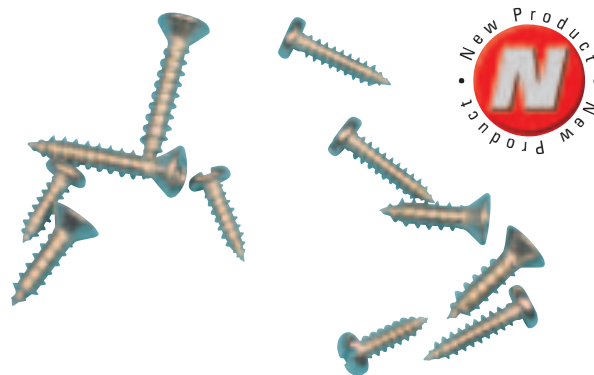
Speedy Rivets

- ▲ Use with B401 Hooks.
- ▲ Tap the two parts together with a hammer until they connect firmly.
- ▲ Only order by full pack - 100 per pack.



Part No.	Finish	Pack Qty
D050N	Nickel Plated Brass	100

Screws - Stainless Steel



Part No.	Size: mm/in	Style	Head
D350	No. 4 x 3/4 (10)	Self Tapping	Pan
D351	No. 4 x 1/2 (12)	Self Tapping	Pan
D353	No. 6 x 1/2 (12)	Self Tapping	Pan
D355	No. 6 x 1/2 (12)	Self Tapping	Flat
D352	No. 6 x 3/4 (10)	Self Tapping	Pan
D372	No. 6 x 3/4 (19)	Self Tapping	Flat
D373	No. 6 x 3/4 (19)	Self Tapping	Oval

Tie Down & Lacing Fittings

Sew-on Cover Hooks & Eyelets - Plastic

- ▲ Injection moulded in nylon.
- ▲ Sew through plastic with straight stitch sewing machine.
- ▲ Can be used alone, or together.



A068WT



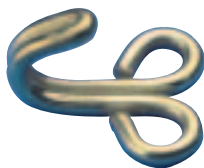
A069WT

Part No.	Description	Color	Pack Qty
A069BK	Hook	Black	100
A069WT	Hook	White	100
A068BK	Eyelet	Black	100
A068WT	Eyelet	White	100

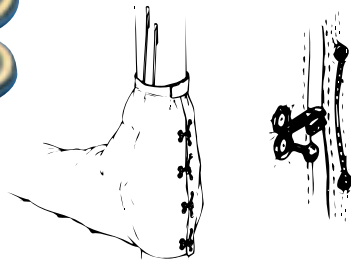
Wire Cover Hooks and Backplate

Ideal method for a simple lacing line run between grommets and cover hook.

- ▲ Hand sew or use D050N speedy rivets (see below) or D383 or D384 rivets.
- ▲ Suitable for up to 9.5mm/ 3/8 inch shock cord.
- ▲ Use SS washers as back plates.



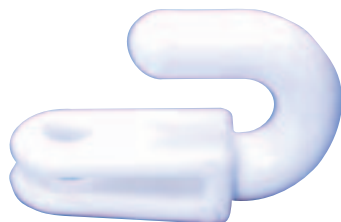
B401B



Part No.	Description	Material	Pack Qty
B401B	Hook	Brass	100
B401S	Hook	Stainless Steel	100

Rivet-on Cover Hook - Plastic

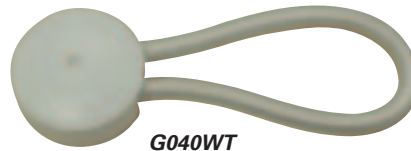
- ▲ Injection moulded in nylon.
- ▲ Use D337 rivets or D383 rivets.
- ▲ Suitable for max 6.4mm/ 1/4 inch shockcord.



Part No.	Color	Pack Qty
A071	White	100

Shock Cord Cover Clip

- ▲ Used with a lacing knob or other cord cover clip for a fast and simple tie-down.
- ▲ Does not require tool to set.
- ▲ Now easier attaching system.



G040WT



G040BK

Part No.	Overall Length: mm/in	Color	Pack Qty
G040BK	86 3 3/8	Black	50
G040WT	86 3 3/8	White	50

Shock Cord Lacing Knob

Used with a cord cover clip for a fast and simple tie-down.
 ▲ Attaches with a screw.



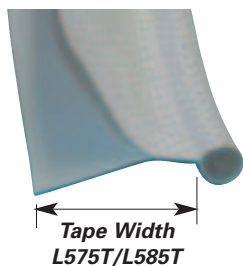
Part No.	Use with Cord Diameter: mm/in	Knob Diameter: mm/in	Color	Pack Qty
G045BK	5 3/16	18 1/8	Black	50
G045WT	5 3/16	18 1/8	White	50



Awning Tapes

Keder Tape

- ▲ Durable woven polyester tape welded to a polyethylene core.
- ▲ Sold in 100m/328' reels.
- ▲ Cut yardage available at a surcharge.
- ▲ Available in two sizes.
- ▲ White or Black.
- ▲ Split tail version also available.



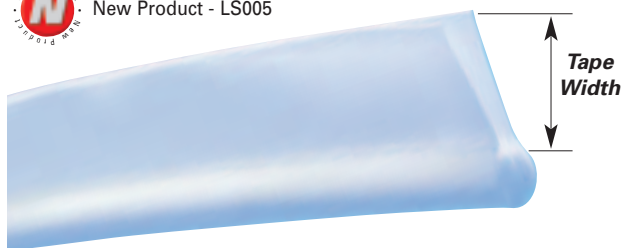
Part No.	Color	Diameter: mm/in	Tape Width: mm/in	Use With
L575	White	7.5 3/8	20 3/4	G510
L575T	White	7.5 3/8	25 1	G510
L575BK	Black	7.5 3/8	20 3/4	G510
L585	White	8.5 1/2	20 3/4	G520/G530
L585LT	White	8.5 1/2	20 3/4	G520/G530
L585BK	Black	8.5 1/2	20 3/4	G520/G530

Polyester Awning Rope

- ▲ Supplied on 76m/250' reels.
- ▲ Tape weave 280gsm/6.5oz.
- ▲ Cut yardage available at a surcharge.



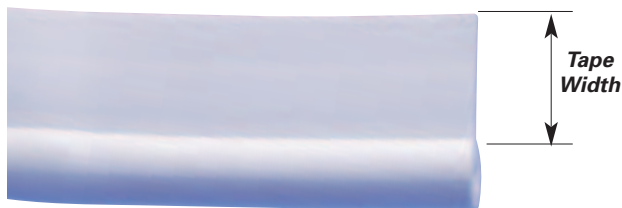
New Product - LS005



Part No.	Diameter: mm/in	Tape Width: mm/in	Tape Weave: gsm/smoz	Use
LS005	5.5 3/8	24 5/8	278 6.5	G535WT/20
LS002	6.0 3/4	20 3/8	278 6.5	G540
LS001	8.0 3/4	20 3/4	278 6.5	G530

Vinyl Extruded Awning Rope

- ▲ Awning rope is supplied on 76m/250 foot reels.
- ▲ Not for Flex-A-Rail.
- ▲ Cut lengths will be surcharged.



Part No.	Diameter: mm/in	Tape Width: mm/in	Color
L520	6.3 3/4	20 3/4	White

3M VHB Attachment Tape

- ▲ High performance acrylic adhesive.
- ▲ Medium density white acrylic foam tape.
- ▲ Adhesive on both sides with red release liner.
- ▲ Use: Attaching automotive and marine trim, awning track, flex a rail.



Part No.	Width: mm/in	Roll Length: m/yd	Case Qty
J112V	12.7 1/2	18 20	12
J117V	22.5 7/8	18 20	12



Warning: Always test adhesive bond strength for your material and application.

Keder Track Slide

- ▲ Allows quick and easy installation to many awning tracks.
- ▲ Designed to suit both aluminium and vinyl track (not Flex-a-Rail).
- ▲ Potentially removes the need for awning ropes.
- ▲ Ideal for making curtains that open and close.



Part No.	Color	Pack Qty
A091WT	White	100

Aluminum Awning Track

- ▲ Bright polished aluminum awning track.
- ▲ Compatible with most BI awning ropes and Keder tapes.
- ▲ Use pan head screws to install.



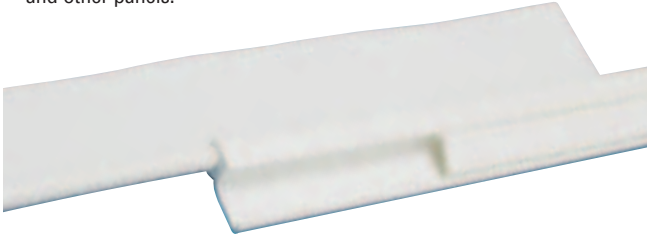
Part No.	Color	Internal Diameter: mm/in	Track Length: mm/ft
G520	Anodised Aluminum	9 3/8	4850 16
G520-8	Anodised Aluminum	9 3/8	2425 8

Awning Track

Cover Trax System

Unique new low profile awning rail system with dacron awning rope and sliding screw cover panel to hide attaching screws.

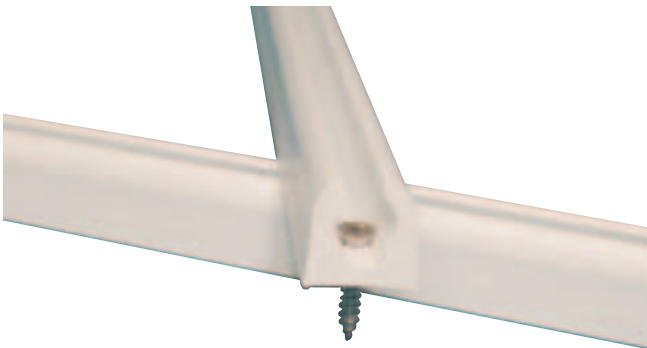
- ▲ Premium grade extruded PVC with UV inhibitors.
- ▲ Sleek and ultra low profile.
- ▲ Can conform to many contours with use of controlled heat from hair dryer or heat gun.
- ▲ Cover Trax can be used for mounting enclosures, curtains and other panels.



Part No.	Description	Length: mm/ft	
G535WT/20	White Cover Trax System Includes Awning Track and Screw Cover Panel	6100	20

Heavy Duty Center Mount Track

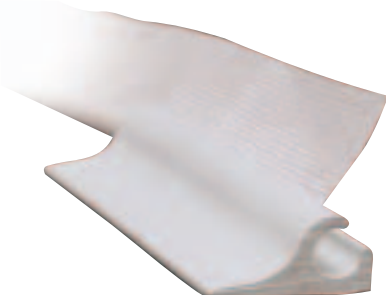
- ▲ Increased PVC profile allows extra load capability for large covers, bimini and track to track enclosures.
- ▲ Can be heat formed to most radius.
- ▲ Large channel opening allows use of large Stainless Steel No.6 oval head screws for more secure attachment.
- ▲ Deeper screw trough base design allows for use of L585 8.5mm Keder with sufficient clearance of screw heads.
- ▲ Standard 8ft lengths but other lengths available against special order.



Part No.	Description	Length: mm/ft	
G515WT	White HD Center Mount Track	2425	8
G515OW	Off White HD Center Mount Track	2425	8

Heavy Duty Vinyl Awning Track

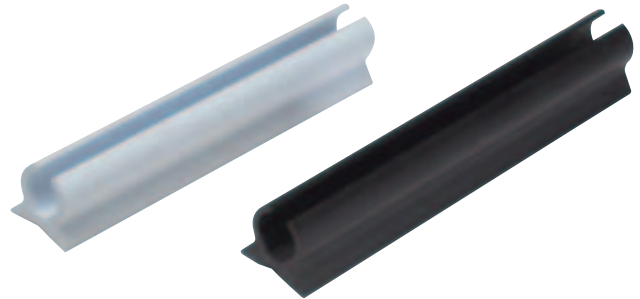
- ▲ UV stabilized PVC construction.
- ▲ Compatible with most BI awning ropes and Keder tapes.



Part No.	Color	Internal Diameter: mm/in	Track Length: mm/ft
G530	White PVC	9mm 3/8	4850 16

Flex-A-Rail Awning Track

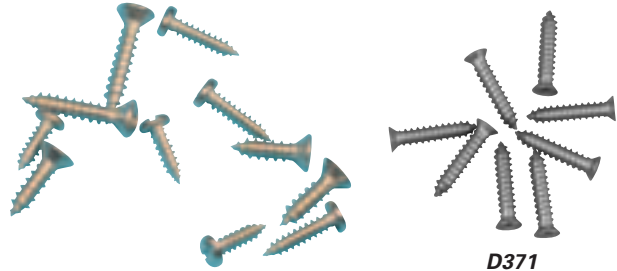
- ▲ Flexible, non-corrosive, extruded PVC track for BI awning ropes.
- ▲ Works best with L575/LS001/LS002.
- ▲ Highly flexible for easy installation.
- ▲ Use flat or oval head screws to install (D355/D356).
- ▲ Use 3M VHB tape to help install Flex-A-Rail.



Part No.	Color	Internal Diameter: mm/in		Track Length: mm/ft
G510	White PVC	8	5/16	2300 7'6"
G510BK	Black PVC	8	5/16	2300 7'6"
G510/15	White PVC	8	5/16	4600 15

Stainless Steel Screws for Attaching Track

- ▲ Use to attach Flex-A-Rail, Cover Trax and other types of awning track.
- ▲ Screws are sold in full packs of 100.

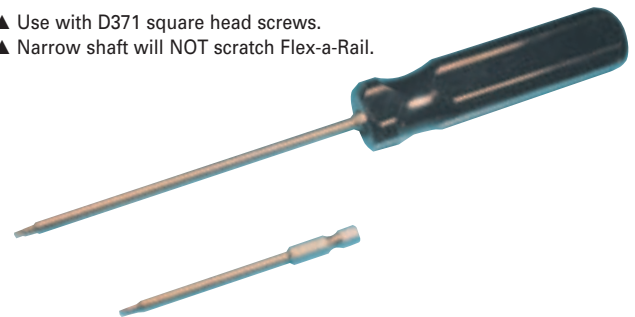


D371

Part No.	Size: mm/in	Style	Head
D350	No. 4 x 3/8 (10)	Self Tapping	Pan
D351	No. 4 x 1/2 (12)	Self Tapping	Pan
D353	No. 6 x 1/2 (12)	Self Tapping	Pan
D355	No. 6 x 1/2 (12)	Self Tapping	Flat
D352	No. 6 x 3/8 (10)	Self Tapping	Pan
D372	No. 6 x 3/4 (19)	Self Tapping	Flat
D373	No. 6 x 3/4 (19)	Self Tapping	Oval
D371	No 4 Head with No 6 Body 19mm/ 3/4 inch	Self Tapping	Square

Square Head Screwdriver

- ▲ Use with D371 square head screws.
- ▲ Narrow shaft will NOT scratch Flex-a-Rail.

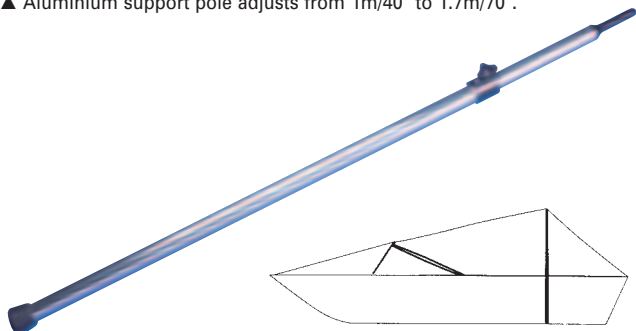


Part No.	Description
C335	Size 0 Square Head Screwdriver
C336	Size 0 Square Head Screwdriver Bit

Poles & Slats

Adjustable Mooring Pole - Aluminum

- ▲ Comes with three interchangeable tips.
- ▲ No. 1 – pole end fits No. 3 spur grommet.
- ▲ No. 2 – soft vinyl tip similar to the foot.
- ▲ No. 3 – with button snap accepts standard G142 socket.
- ▲ Aluminium support pole adjusts from 1m/40" to 1.7m/70".



Part No.	Description
G370	Adjusts from 1.0 to 1.7 meters/40 to 70 inches

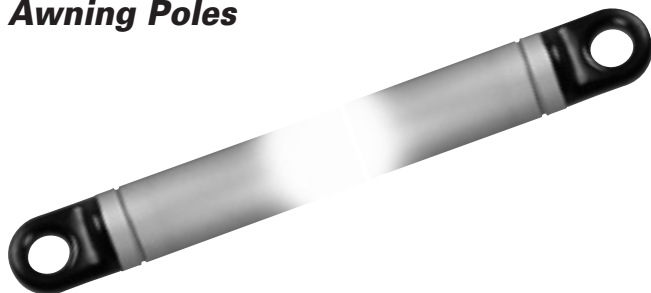
Boat Vent II

- ▲ UV resistant material.
- ▲ Fast installation.
- ▲ No screws or awls needed.
- ▲ Fits 3/4" or 7/8" tubing.
- ▲ Attach to the top of adjustable mooring pole (G370).
- ▲ Use for venting the area below the cover.



Part No.	Description
G050BK	Boat Vent II - Boat Cover Support and Vent

Adjustable Anodized Aluminum Awning Poles



Part No.	Description
G308	Adjusts from 4 to 8 feet (1.2 to 2.4 meters)
G309	Adjusts from 6 to 12 feet (1.8 to 3.6 meters) - Heavy Duty

Boat Cover Socket

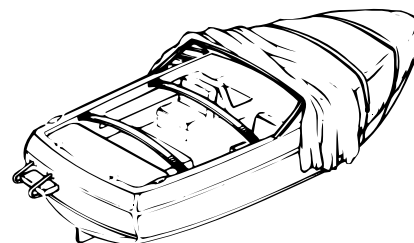
- ▲ Use one or more pairs of sockets with 44mm/1 3/4 inch fiberglass batten material to support boat cover.
- ▲ Use No 8 flat or oval head screws.
- ▲ Sockets are sold in pairs only.



Part No.	Description	Pack Qty
G670	Chrome Die Cast	10 pair

Fiberglass Bow Slat

- ▲ Use with boat cover sockets (G670, above) forming an arch to support boat cover.
- ▲ Bow Slat/Battens are supplied in 7.6m/25 foot lengths only.



Part No.	Batten Width: mm/in		Batten Thickness: mm/in	
45NT	45	1 3/4	6	3/4



Xtreme Seal®

Xtreme Seal edge seal is a closed-cell, flexible material that can be glued or sewn to most materials and surfaces.

- ▲ Edge seal creates a three-point contact seal on most surfaces.
- ▲ Perfect choice as an edge seal on all types of custom covers.
- ▲ Can be used on convertible tops, side curtains, windshield tops, radar arches and awnings.
- ▲ Place Xtreme Seal under the binding edge on the inside of the finished surface, large bead towards the back and the small tip $\frac{1}{8}$ to $\frac{1}{4}$ inch revealed. Place the material and Xtreme Seal under sewing machine canvas side up.



L710BK



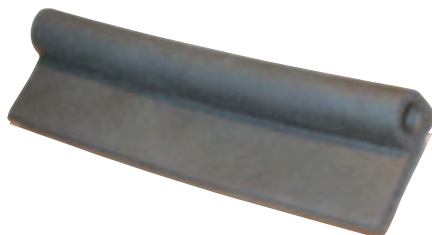
L710WT

Part No.	Color	Edge Seal Width: mm/in		Length: m/ft	
L710BK	Black	44	1 $\frac{3}{4}$	30	100
L710WT	White	44	1 $\frac{3}{4}$	30	100

Spray Welt w/Adhesive

This is a new and fully functional spray welt manufactured from extruded foam rubber and is well suited for almost all applications where a tight, waterproof seal is required when a panel or enclosure is clamped into place.

- ▲ P-section design ensures maximum efficiency.
- ▲ Durable extruded foam rubber composition.
- ▲ Hi-tack adhesive with release paper on rear.
- ▲ Sold in economical 13m/50 feet and 76m/250 feet reels.
- ▲ This product is ideal weather strip for sealing: enclosures, dodgers, covers etc.



Part No.	Description
L705BKA	1 $\frac{1}{2}$ " Wide Black Rubber with Pressure Sensitive Adhesive

Ball & Socket Fittings

Ball and socket design offers quick and easy fold and removal of bimini tops. A variety of tube, deck and side mounting options.

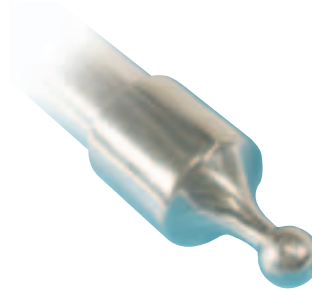
- ▲ Full rotation of top frame.
- ▲ Delrin inserts insure smooth movement and tight rattle free fit.
- ▲ Pin and lanyard system for secure positioning and quick release.
- ▲ Polished 316 stainless steel.



G675S



G672S
G682S



G671S
G681S



Part No.	Description
G671S	22mm/ $\frac{7}{8}$ " Stainless Steel Ball Eye End
G681S	25mm/1 " Stainless Steel Ball Eye End
G678S	22mm/ $\frac{7}{8}$ " Stainless Steel 90 Degree Ball Eye End
G672S	22mm/ $\frac{7}{8}$ " Stainless Steel Socket Jaw Slide
G682S	25mm/1" Stainless Steel Socket Jaw Slide
G675S	Stainless Steel Deck Hinge with Pull Pin & Lanyard

Pattern Making Tools

Pattern XX Pattern Material

- ▲ High quality semi-opaque product offering the best way to pattern a wide variety of projects.
- ▲ Manufactured from high quality polyethylene filaments coated on both sides to provide excellent tear strength and directional stability.
- ▲ FP078 is folded to 1830mm/72 inches, but opens to 3650mm/144 inches.

Pattern-XX™

Part No.	Description	Thickness: mm/in		Roll Length: m/yd	
FP076	1380mm/72 inch Wide	0.12	0.005	91	100
FP078	3660mm/144 inch Wide	0.12	0.005	45.5	50

Measuring Tapes - Metal

- ▲ Impact resistant ABS case with winding handle.
- ▲ Double sided 10mm blade: meters x centimeters/millimeters reverse side: feet x inches/ 1/8 inches.



Part No.	Description
C705	30m/100ft Steel Tape

Measuring Tapes - Fiberglass

- ▲ Impact resistant case.
- ▲ C713 - Graduated top edge: feet x inches/ 1/8 inches bottom edge: meters x centimeters/millimeters.
- ▲ C706 - Graduated top edge: feet x inches/ 1/16 inches bottom edge: meters x centimeters/millimeters.



Part No.	Description	Scale
C713	30m/100ft/ Fiberglass	ft-in/m-m
C706	30m/100ft/ Fiberglass	ft/1/16 ft



▲ Note: Always check the position of point zero before use.

Pony Cloth Clamps

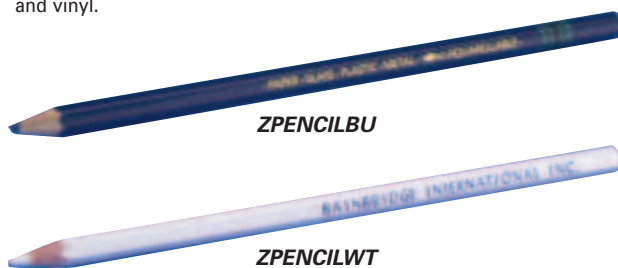


Part No.	Jaw Opening: mm/in		Overall Length: mm/in	
C515	25	1	102	4
C516	51	2	152	6
C517	76	3	229	9

Washable Marking Pencils

Ideal for making marks on Sunbrella, TopGun or most other fabrics and vinyls.

- ▲ Use a moist sponge or damp fabric towel to remove pencil marks.
- ▲ Pencils do not contain wax.
- ▲ Ideal for making marks on Sunbrella, Top Gun or most other fabrics and vinyl.



Part No.	Color	Pencils Per Box
ZPENCILWT	White	12
ZPENCILBU	Blue	12

China Marker

Marks on boat top, industrial vinyls, glass, window vinyl, polycarbonate or any polished surface.

- ▲ String-pull sharpening.
- ▲ Wipes off easily with a damp cloth.



Part No.	Color	Pencils Per Box
ZMARKERWT	White	12



▲ Note: Always test effectiveness of china markers and washable pencils on a scrap piece of the exact material before use on a new project.